



THE HOUSE OF ARTS & CULTURE THE LEBANESE-OMANI CENTRE

URBAN FABRIC

As located in privileged position on Mediterranean, this project consider the symbolic relations between politics, religions, geometry, and culture, strategically proposed URBAN FABRIC to unify and respond to these social changing. URBAN FABRIC not only integrated spatial forms with structure but also integrated various programmes and functions. In turn, this project will benefit both the city and the country.

Concepts

-interweaving:

structurally interweave through cultural programming and arts
provide forum for exchange ideas and debates
potentials for exchange ideas and inspired each other

-integrating:

embody the dynamic structural pattern reciprocating with the city's formations.
provide a unique chance for integrating in various scale.

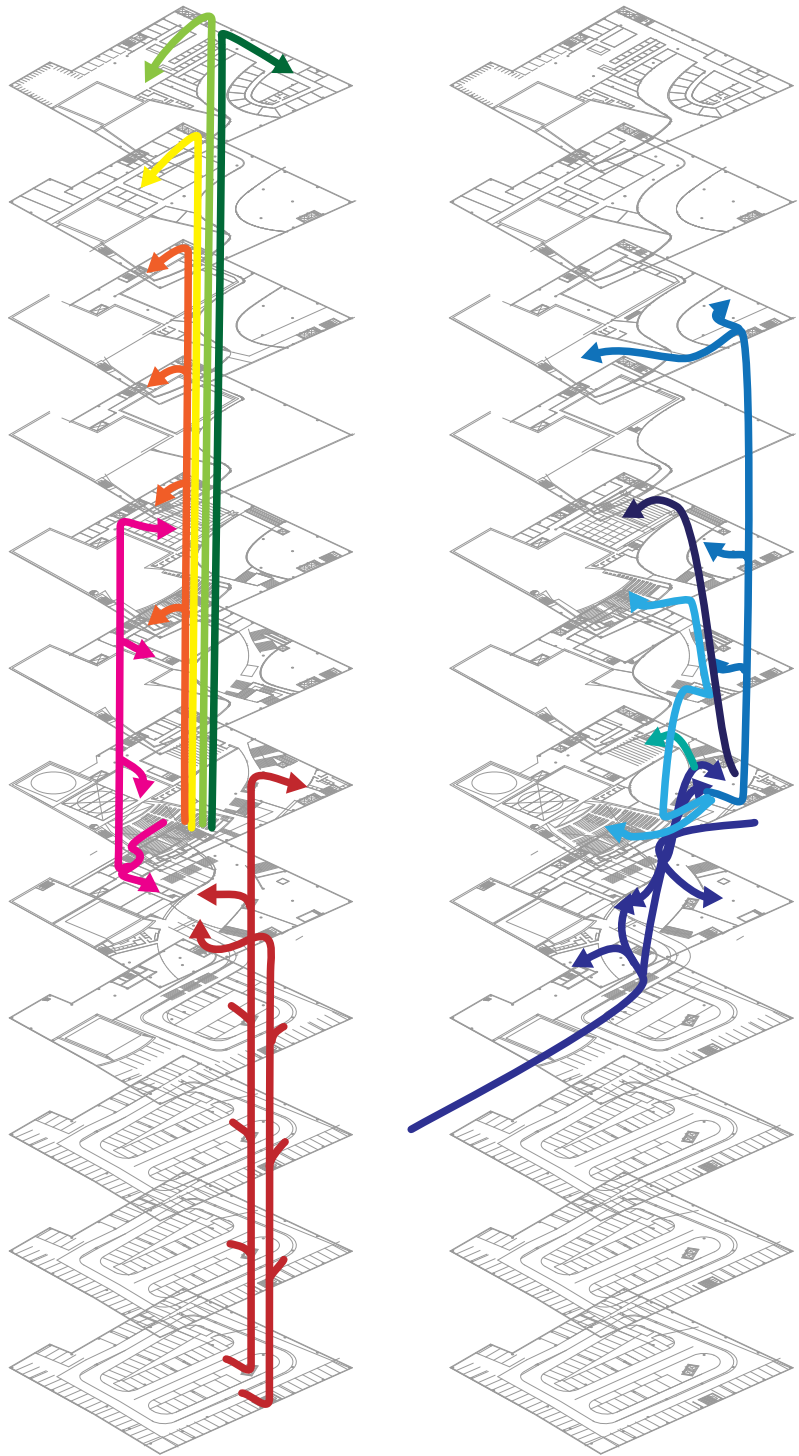
-intelligence:

Recognizing the history effects, engaging citizens with creative ways
using up to date technology connecting with global information networks,
Allowing to exchange information and ideas promptly

Project

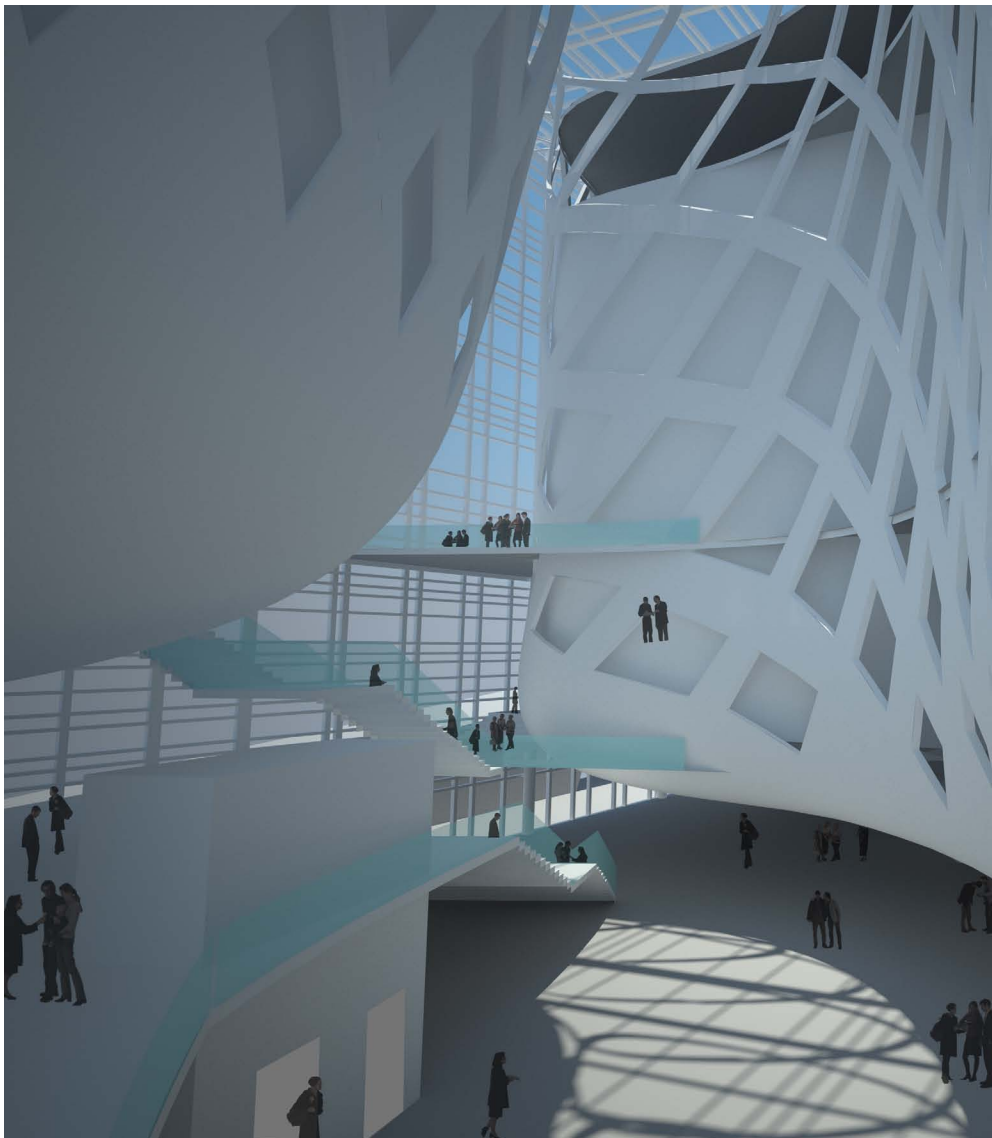
program distribution:
common lobby at +4m level with direct accesses to theatres, movie theater, and exhibitions.
the access for administration office workshops and documentation center is separated from theatres and services.

Access:
spatial public access with separated service accesses, vertical lobbies for theaters directly connected by common lobby level at 4m

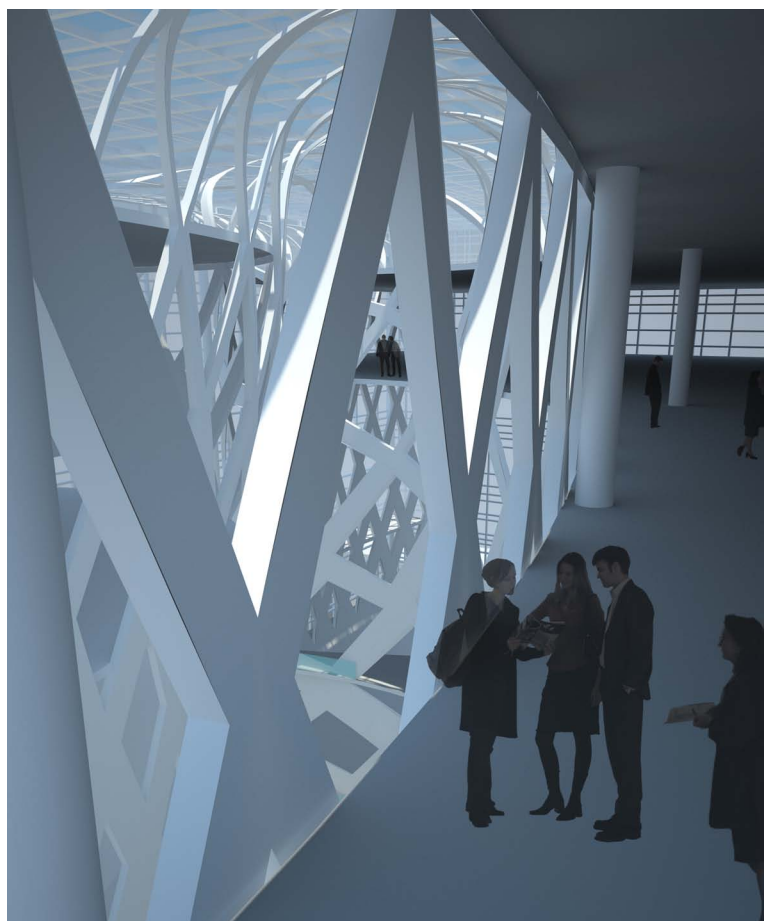


- | | | | |
|---|-------------------------|---|---------------------------------------|
|  | Performance Halls |  | Public access |
|  | National Cinematheque |  | Public Open Areas - Restaurant, Shops |
|  | Work and Training Rooms |  | Large Performance Hall |
|  | Documentation Centre |  | Cinema |
|  | Administration |  | Small Performance Hall |
|  | Car Parking |  | Exhibition Spaces |

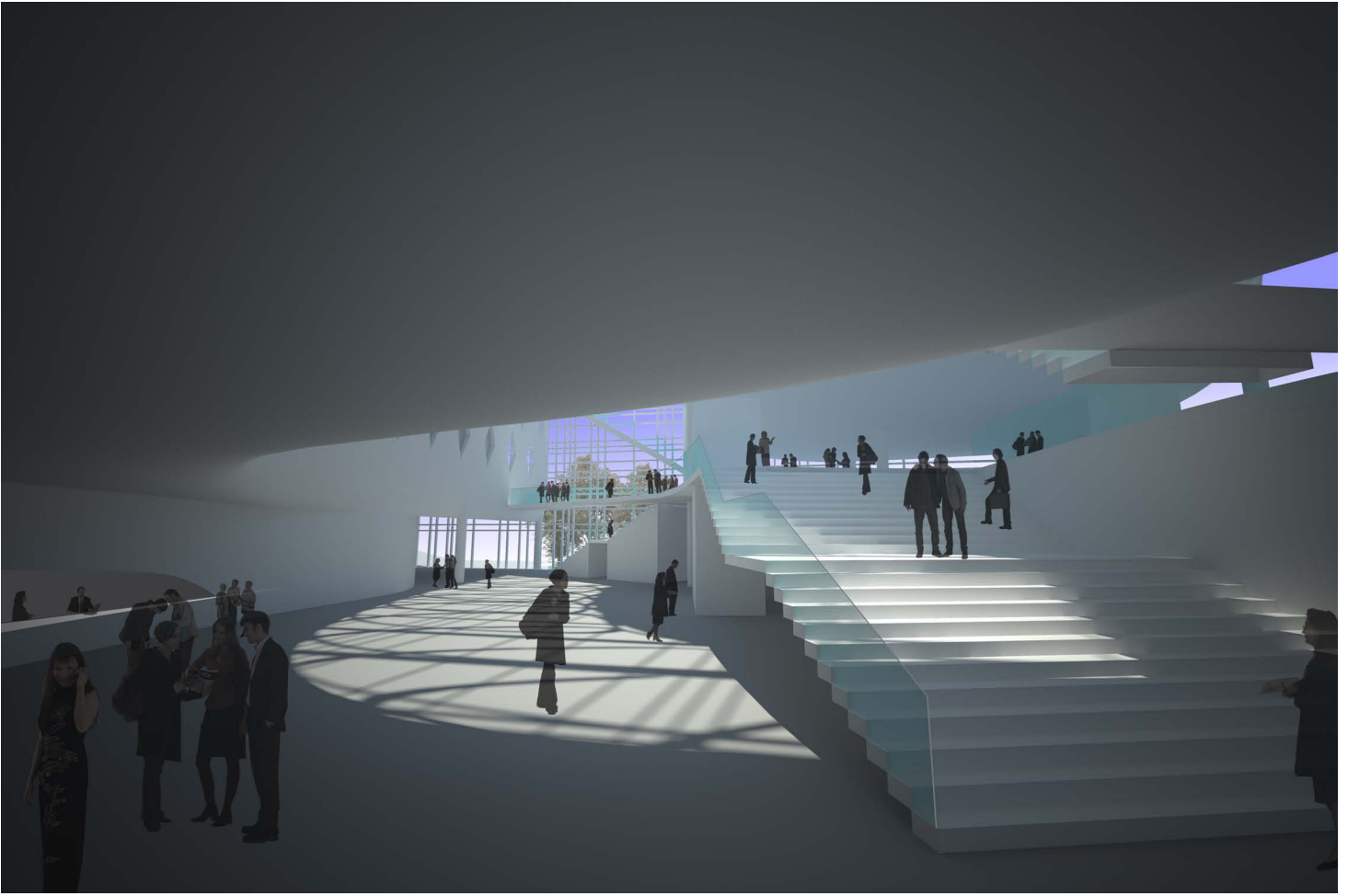
CIRCULATION DIAGRAM



view from multimedia performance hall
toward common lobby @+4m and reception hall @+0m



view at office level



view from reception hall @+0m toward main entrance