

DESIGN CONCEPT for  
"HOUSE OF ART AND CULTURE"

I. The basic idea

"House of Art and Culture" must be the engine which promotes future cultural activities in Beirut. We are taking out the following four aspects.

**I-a: Open to the public**

To get familiar with cultural activities, the facility itself must be open. We are proposing the mechanism, which enables all the places in the building, even the space at the theater and the workshops, to be open to the public.

**I-b: Place for daily life**

The communication among people makes the chance of a new cultural activity. At this building, various places are ready, where people can spend their daily lives, mainly in four gardens of The Sky, The Earth, The Cave, and The City.

**I-c: Functional authenticity**

All the elements must be functionally composed. In this building, a clear zoning is furnished for respective functions, and further, all the parts are clearly composed, from the arrangement of the visitor and the service lines to the layout of various rooms.

**I-d: The existence, easy to understand**

It should be the building that everybody knows. The mere conspicuous appearance would not attract people for a long time. When the building is made with a clear composition procedure, it would take the existence easy to understand.

This building is designed to achieve these four criterias mentioned above.

**II. The basic structure of the building**

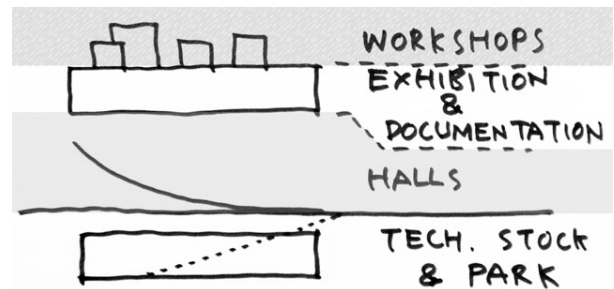
To realize the above-mentioned ideas, we adopt the following three diagrams.

**II-a: 4 layers = the simple layer type zoning**

This building is composed as it piles the following four zones lengthwise. It is the order as the space becomes smaller for the loft from the floor below.

(Refer: C. Four layers (zones) )

- 1: Workshops / 5<sup>th</sup> floor
- 2: Exhibition and Documentation / 4<sup>th</sup> floor
- 3: Performance Halls (include Movie theater) / 1, 2, 3<sup>rd</sup> floor
- 4: Miscellaneous and Parking / basement

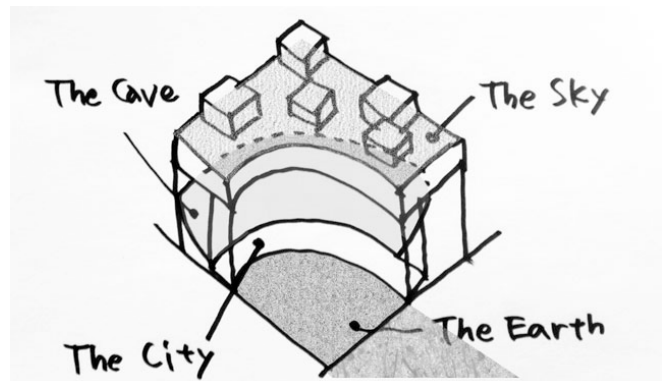


**II-b: 4 gardens = the place to spend daily life**

The gardens of four different types are providing various places to spend daily life.

(Refer: D. Four gardens)

- 1: The Earth=Outdoor plaza spreads to north
- 2: The Cave=Open space when not using the Theater
- 3: The Sky=Rooftop garden
- 4: The City=Entrance + Cafe + Shop + Lounge

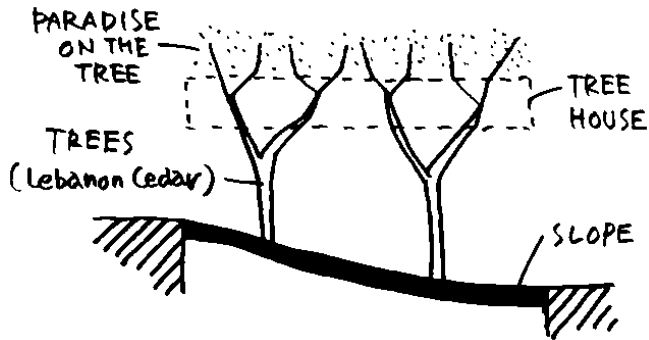


**II-c: 4 steps story=Narrative composition**

By making the composition in narrative way, it can insist its strong existence. The forest of the Lebanon cedar also contributes to achieve the structure enables the space open.

(Refer: V. The structure, the facilities)

- 1: Make a wide slope to connect the around area. (The slope = Halls)
- 2: Put some big trees on the slope (The forest of the Lebanon cedar = Structure).
- 3: Space clinging the branches like a tree house. (Tree House = Exhib. & Document.)
- 4: The treetop paradise spreads on the forest (Paradise = Rooftop garden & Workshops)



### III. Four layers (zones)

The characteristics of each zones in detail.

#### III-a: Hall related facility zone / 1,2 & 3<sup>rd</sup> floor

By separating the slope with big partitions, three Halls appear on it. Some of the partitions are movable and it creates various styles. When not used as a Theater, it is transformed into the open plaza and it provides a symbolical space in this building. (Refer: IV-b: The Cave)

##### III-a-i: Large Perform. & Conference Hall:

Multipurpose hall with movable seats on a slope. The stage has the sleeves on both sides. When the rear shutter is opening, the entrance hall can be use as the back stage.

##### III-a-ii: Small Multimedia Performance Hall:

The flexible hall with the same system of the large hall. It is located next to the large hall, sharing a sleeve stage, technical rooms and so on.

**III-a-iii: Movie Theater** : Placing close to the above two halls, this hall can share some items also.

**III-a-iv:: The foyer** : The 2<sup>nd</sup> floor is the main floor with the foyer for two performance halls.

#### III-b : Exhibition and Documentation zone / the 4<sup>th</sup> floor

The exhibition area spreads out surrounding the Fly-Tower that appears from the floor below and the library (documentation) area spreads out surrounding the exhibition area.

**III-b-i : The exhibition area:** The exhibition area is moderately segregated by the Fly-Tower, and further, it can be divided by movable partitions as necessary.

**III-b-ii : The library area:** The library area is stretched along the outer wall, which creates

an openness and brightness. In accordance with the character of facing street, an audiovisual service is on the east side, a leading room and a study room on the south side and the stacks on the west side.

#### III-c : Workshop zone / the 5<sup>th</sup> floor

The workshop related rooms are on the top of this building. Here is arranged like a residential quarters of detached houses with own gardens.

##### III-c-i : Workshop rooms

Rooms are separated and each room faces to outside work area. Huge elevator connect to the delivery area at basement directly.

##### III-c-ii : The rooftop garden

(Refer : IV-c: The Sky)

#### III-d: Miscellaneous & Parking / basement

All vehicles go down to the 1<sup>st</sup> basement. There, the area is separated, one for general vehicles to the parking lot and the other for the service related area with delivery and technical rooms.

##### III-d-i : The parking lot and the delivery

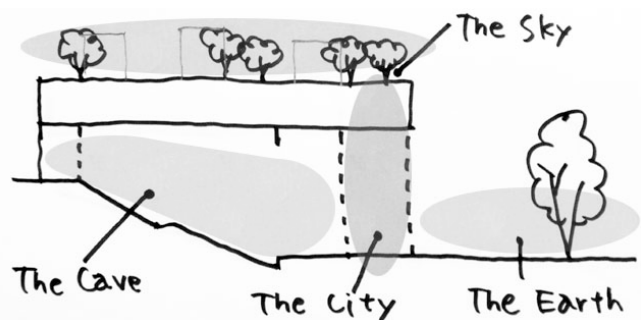
The parking lot is on the 1<sup>st</sup>, 2<sup>nd</sup> and 3<sup>rd</sup> basement with a surface parking. Delivery area has enough square and connect to the big elevator directly.

##### III-d-ii : Storage for Cinematheque

Storages for Cinematheque are on the basement. It is easy to control the temperature and humidity stably there.

### IV. Four gardens = place for communication

Various types of gardens are open to the people.



#### IV-a : The Earth / Outdoor plaza

The outside garden is the rich green garden, which looks united with the garden at the neighboring building in the north. With the building as a background, it can be use as the

event space like an outdoor theater. Further, by opening the building facade completely, it becomes a vast plaza connected to The Cave.

**IV-b : The Cave / Indoor plaza (hall & theater)**

When not using the theater, you can store all the chairs under the floor, and open the wall around the halls. The hall would be the vast slope garden under the piloti. It is the huge bright space with the sunshine and it is like outdoors. Regardless of the weather, people can lie down and sit at any time.

**IV-c : The Sky / The rooftop garden**

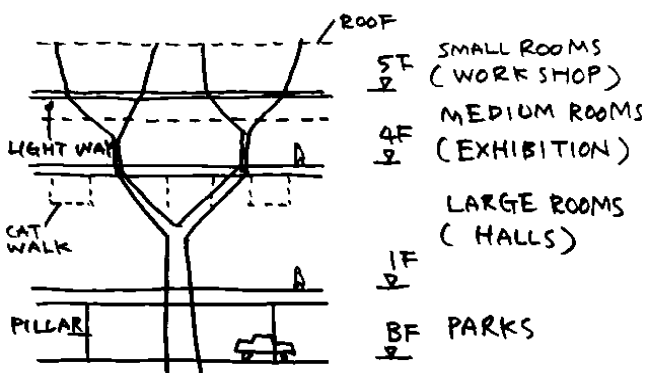
The rooftop garden is the place like a paradise where flowers of the season and the wood deck terrace spread. Far from the bustle of the city, he/she can spend a private time. People can also enjoy the activities in the workshop.

**IV-d : The City / Entrance + Cafe + Shop + Lounge**

This is the garden along The Earth, stretching like an arc and three-dimensionally unified by the escalator. It is the urban space dotted with cafe, shops, lounges, etc. Here is a connecting zone between The Earth and The Cave, or a buffer zone for the back stage of the hall. The outer gate can be fully opened in its width.

**V. The structure, the facilities**

**V-a : The structure = the forest of big trees**

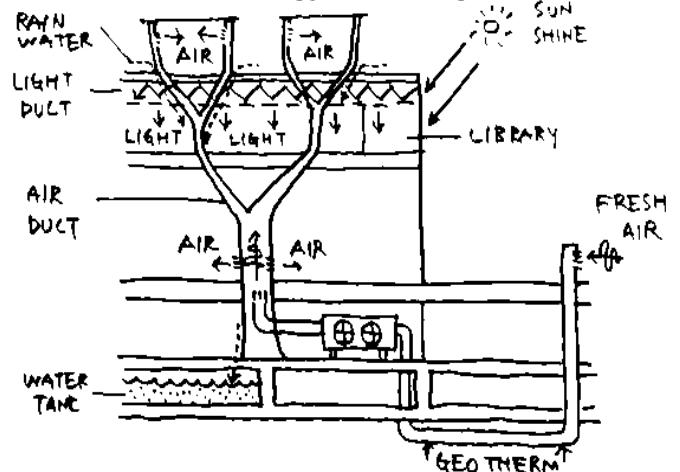


The structure like big trees support this whole building. In other words, the thick pillar like the trunk of the tree grow from the basement to around the 2<sup>nd</sup> floor, and branch off around there, then at the 5<sup>th</sup> floor, branches spreads more minutely. In this building, the rooms of a

smaller spatial unit are in the upper floor, and the spatial unit becomes bigger downwards, which also fits with the structure.

**V-b : The facilities**

**V-b-i : The energy line along the tree**



The heat energy born in the basement machine room, is carried to every corner at the building through the structure just like the tree in the forest to carry water in the ground to every leaf at the end of the branch.

On the other hand, the rainwater gathered on the roof is concentrated in the basement through the structure and is utilized for the restroom drainage and so on.

**V-b-ii : The utilization of the natural energy**

The utilization of the natural energy is considered. Some examples are shown in the following.

**The natural light utilization:** In the exhibition hall, the natural light pours through the lighting-duct in big ceiling bosom, levelly dragged from the outer wall. As for the rooms in the library etc, the layout is arranged to easily get the natural light.

**The geotherm utilization:** Utilizing the stable temperature of the ground, the fresh air introduction is conducted in order not to produce any waste.

**The weight ventilation:** The entrance hall is operated as the half-outside space by opening the door completely in the midterm, and in the seasons back and forth, it utilizes the mechanism of weight ventilation.

## Summary of Surface Areas

Spaces	Code	Type of Space	Useful Surface/m <sup>2</sup>	TOTAL
A. Reception, Information	A1	Reception Hall	364	486
	A2	Ticket offices	45	
	A3	Information desk	21	
	A4	Security room	18	
	A5	Public restrooms	38	
B. Performance and Conference hall	B1	Hall	1059	2946
	B2	Butlery		
	B3	Public restrooms	42	
	B4	Hall	754	
		Control room	114	
	B5	SMALL MULTIMEDIA PERFORMANCE HALL	305	
	B6	Adjoining rooms common to both performance halls	336	
	B7	MEETING ROOMS	144	
B8	MOVIE THEATER	192		
C. Exhibition Spaces	C1	Lounge	91	1143
	C2	Exhibition Room	991	
	C3	Workshop	43	
	C4	Staff Restrooms	10	
	C5	Butlery	8	
D. Work and Training rooms	D1	Workshops	560	605
	D2	Restrooms and showers	45	
E, Documentation	E1	Library	460	643
	E2	AUDIOVISUAL SERVICE	66	
	E3	Study rooms	42	
	E4	Offices	31	
	E5	Workshops	25	
	E6	Restrooms	19	
F. Cinematheque	F1	ADMINISTRATIVE OFFICES	88	286
	F2	STORAGE ROOMS	198	
G. Cafeteria and commercial spaces	G1	CAFETERIA	268	443
	G2	Shops and Boutiques	175	
H. Administration	H1-16		517	517
I. Miscellaneous Spaces	I1-5	STORAGE AREAS	283	283
	I6-9	SOCIAL SPACE		
J. Technical rooms	J1	TECHNICAL MISCELLANEOUS AREAS	426	426
K. Parking and delivery	K1	Underground parking	8450	8688
	K2	Delivery Area for equipment and sets, etc	238	
<b>TOTAL USEFUL SURFACE</b>				<b>16466</b>
Horizontal and vertical circulation				1941
<b>TOTAL</b>				<b>18407</b>