

# The HOUSE OF ARTS & CULTURE

## Goals :

- The general image of the building melts with the dream image of Beirut as a visual modern exhibition.
- The building should reflect a multidisciplinary image through a simple image, not-separated form and an inner calm atmosphere.
- The building should create public spaces with different types and impacts.
- The building aims for representing the image of the Lebanese spirit, community and above all the Lebanese culture.
- The building is a chance of a new experience for the users wandering through its spaces interacting visually, manually and spiritually.

Beirut Dream



Interaction



Lebanese Culture



Visual Experience

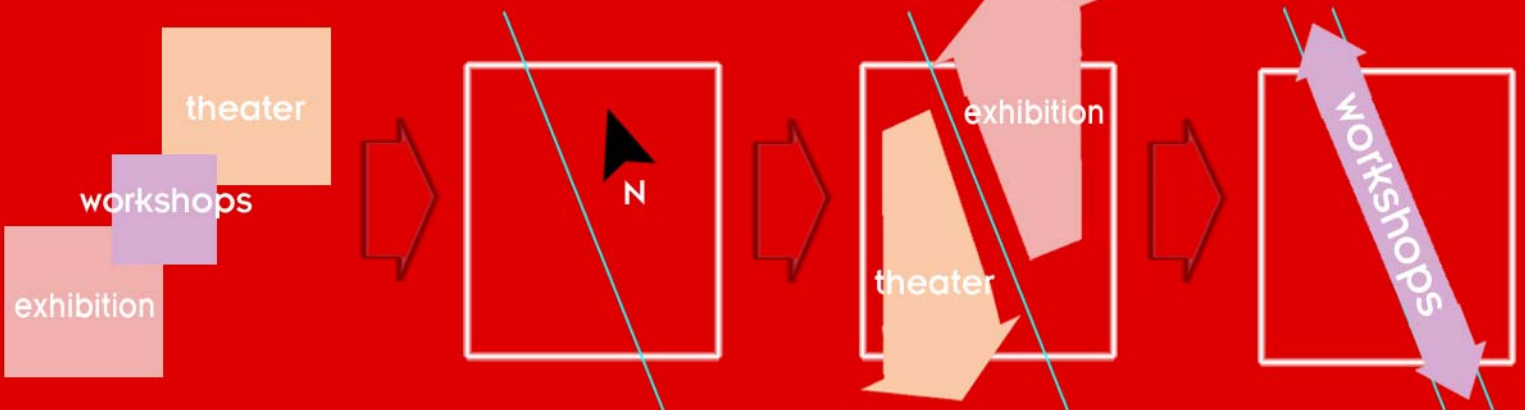


## The form generation:

The main aim of the form is to reflect the contrast in the visual memory of Lebanon and Beirut and the richness in the Lebanese culture and life style.

The building has several different spaces, which is the grand theater and exhibition are most important. These special spaces have the power to generate and form the building.

but it shouldn't forget the importance of the workshops as the main pulse of the projects' activity which is considered as a main axis of the building. The design of form respects the idea of making public spaces which create several different activities.



# The HOUSE OF ARTS & CULTURE

the festive of Beirut is assimilated in the multifaceted forms of its buildings, this city is a historical and architectural museum, yet modern.

we attempt to reflect that exhilarating contrast of Beirut life aspects by making the building **LIVE, INTERACTIVE & CREATIVE**

## LIVE, INTERACTIVE & CREATIVE



### 1. the festive image of dream city.

the grand stairs form rather than glassed entrance give a great chance to react with Beirut different evidence, although the form appears a solid mass but the idea opacity can assured by simple sculpture form.

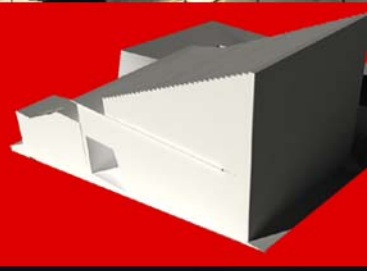
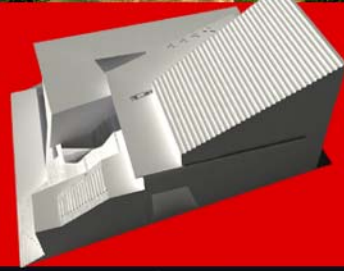
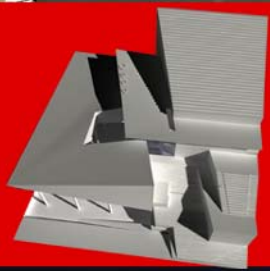


# The HOUSE OF ARTS & CULTURE



## 2. the festive image of the life city.

The simple and direct form of the public spaces which are different in shapes and activity . these spaces reflect different types of art and culture in Lebanon.



## 3. the festive image of the modern city.

By cutting the connection between outside with its fasten live style and the romance inside the building , suspended entrance and the sense of lightness and simplicity , the quit tread on the floors create a romantic, almost poetic atmosphere enabling the audience to almost feel the music which they have come to hear.



# The HOUSE OF ARTS & CULTURE

## The interior generation:

The sculpture formation extends skillfully to the inside transforming all internal courtyards into groups of stimulating visual relationships. This adds sophistication to the interior in contrast to the simplicity found outside, which presents itself as one mass of sculpture.

also, the design aimed for the integration between the interior and the exterior through the glazed transparent surfaces and voids.



the workshops atrium



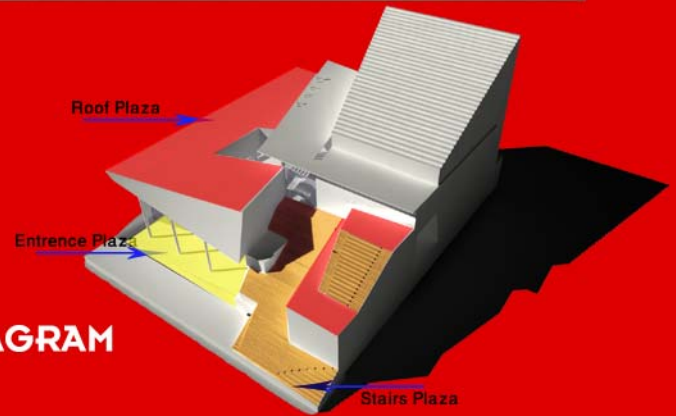
the Exhibition and workshops



LARGE PERFORMANCE AND CONFERENCE HALL

the Five Format for  
THE  
LARGE  
PERFORMANCE  
AND CONFERENCE  
HALL

## 3D PLAZA DIAGRAM



type 4



type 3



type 2



type 1

## 3D ZONING DIAGRAM

- A . Reception, Information
- B . Performance and Conference hall
- C . Exhibition Spaces
- D . Work and Training rooms
- E . Documentation Centre
- F . Cinematheque
- G . Cafeteria and commercial spaces
- H . Administration
- I . Miscellaneous Spaces
- J . Technical rooms

