

Urban context



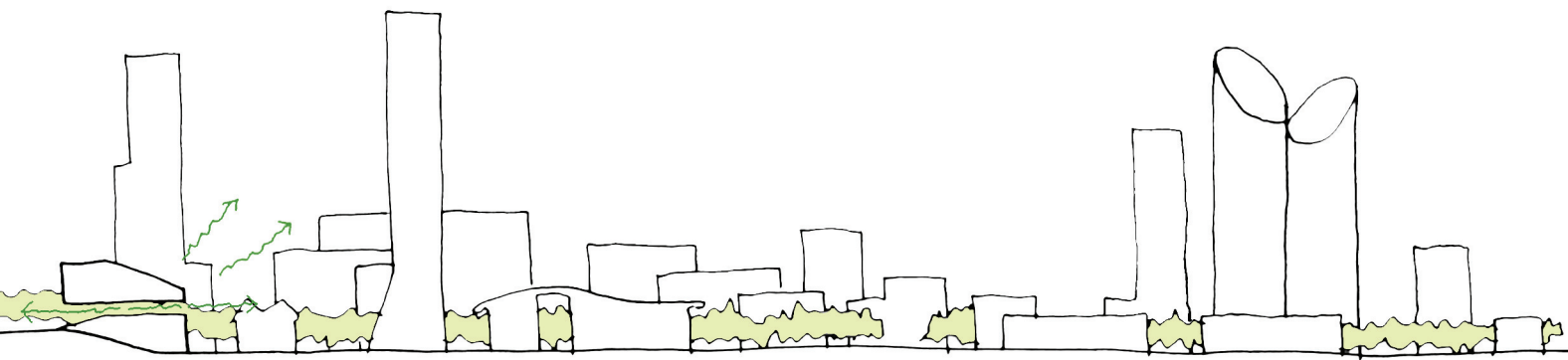
PROGRAM

The objective of the project is to create a public square for the city, which connects the urban context surrounding it, and can be conceived as a platform for citizen's art and culture activities.

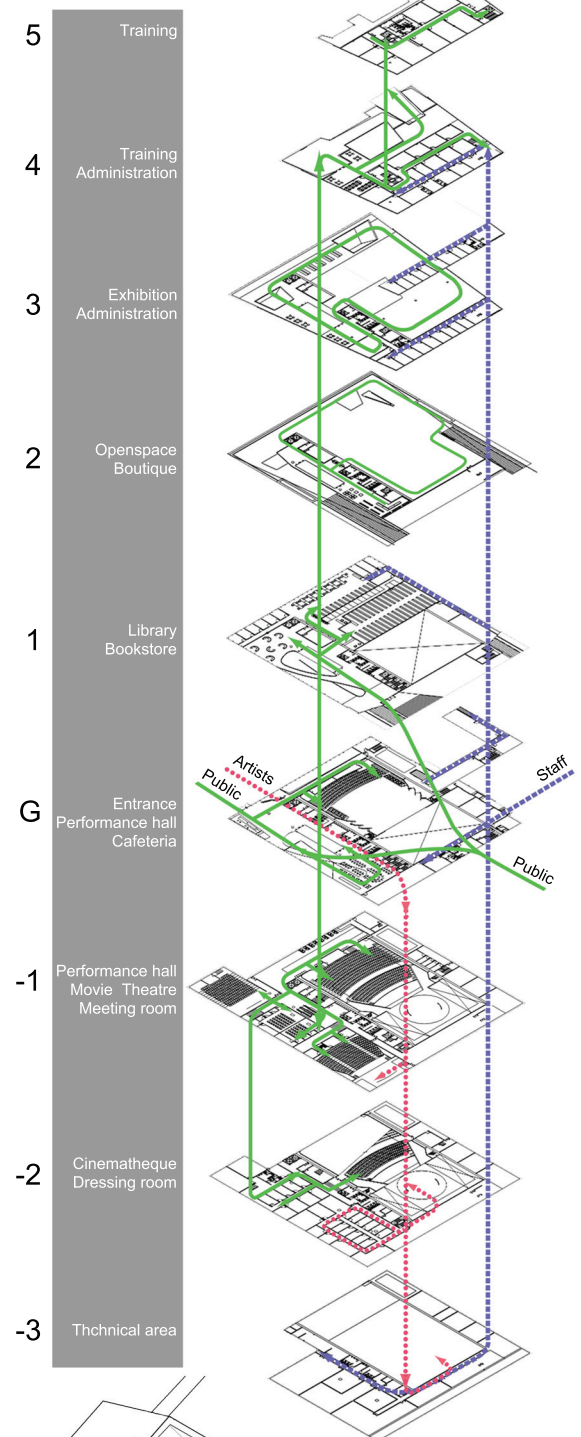
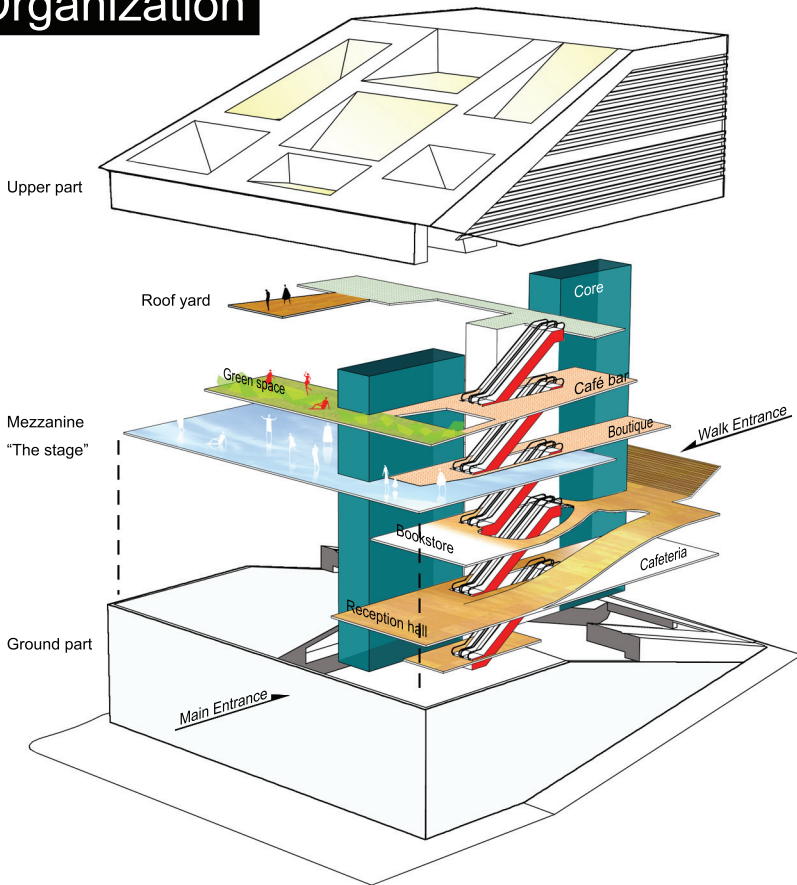
CONNECT

The program, a monolith urban substance is split in two by a semi-outdoor mezzanine, illuminated by the skylight above. The "urban stage", above the north street 13meter; connects the new wave front district and city. Distant views of cityscape would appear; so that peoples can enjoy the sight of the cityscape and express themselves freely.

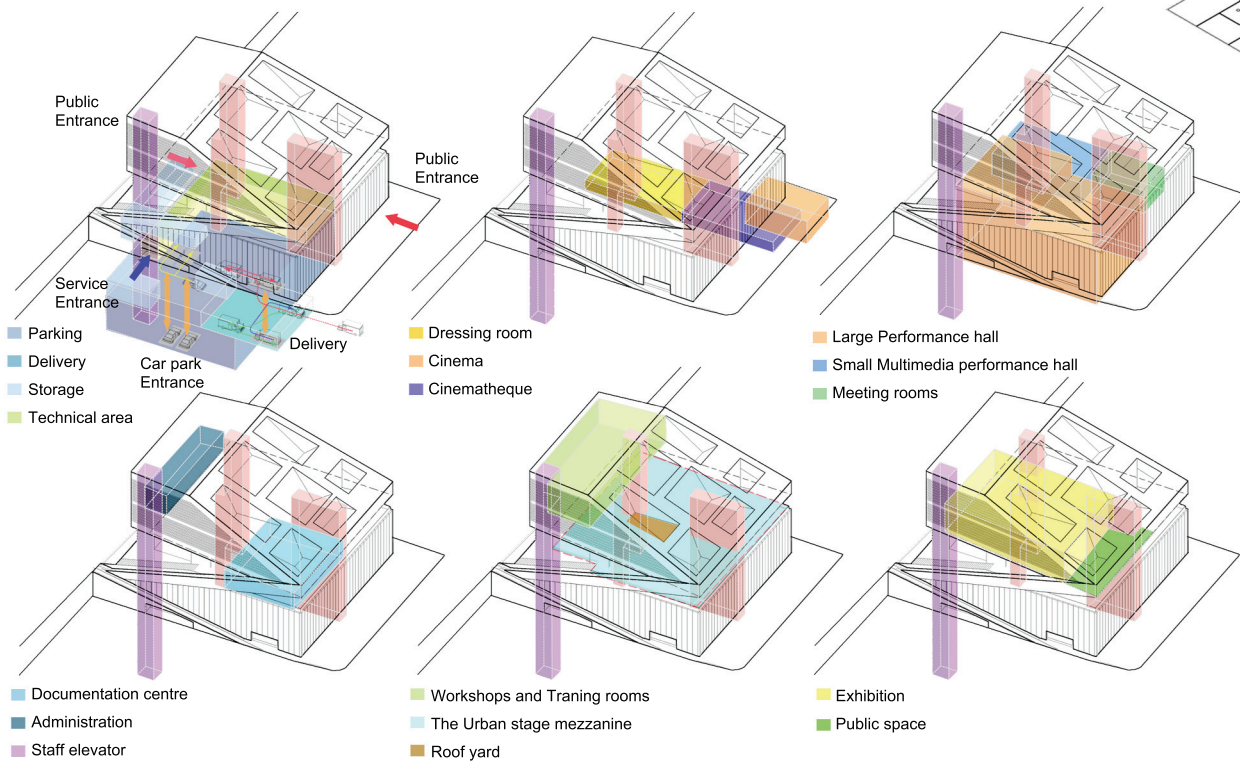
STAGE



Organization



Consuming spaces (café bar, cafeteria, bookstores, boutiques) is the catalyst of the building's running, which integrated in the public space, are distributed around the vertical circulation. Reception hall, cafeteria, bookstores, boutiques, horizon circulations combine into a continuous floor surface, links Avenue du General Fouad chehab and rue Ghalghoul. Escalators connecting each floor for a shortcut.



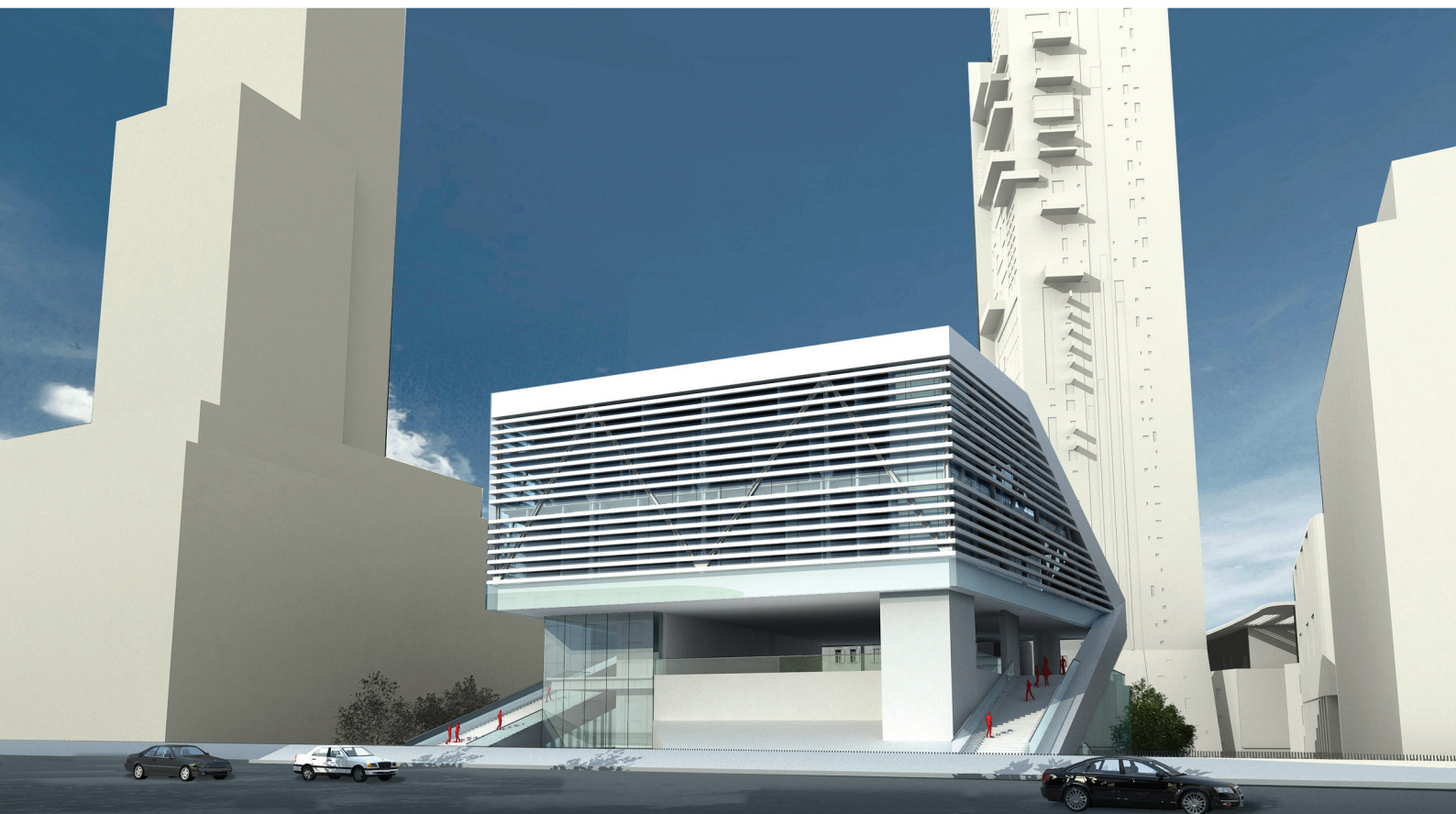
Interior & Exterior



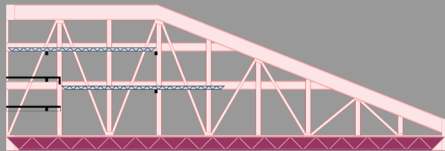
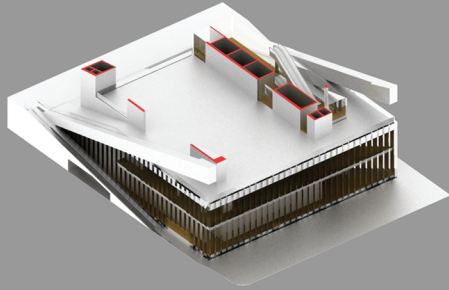
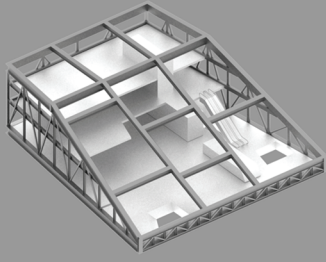
Light well and a filter provides a stable and mild normal lighting for exhibition and public spaces below, a roof yard on upper part. The skylight, roof yard integrates the exterior environment and interior spaces.

Some adjustable artificial lighting set in exhibition hall can improve the lighting of this building.

As a total space, exhibition hall provides the possibility of being divided into diverse layouts for the installation.

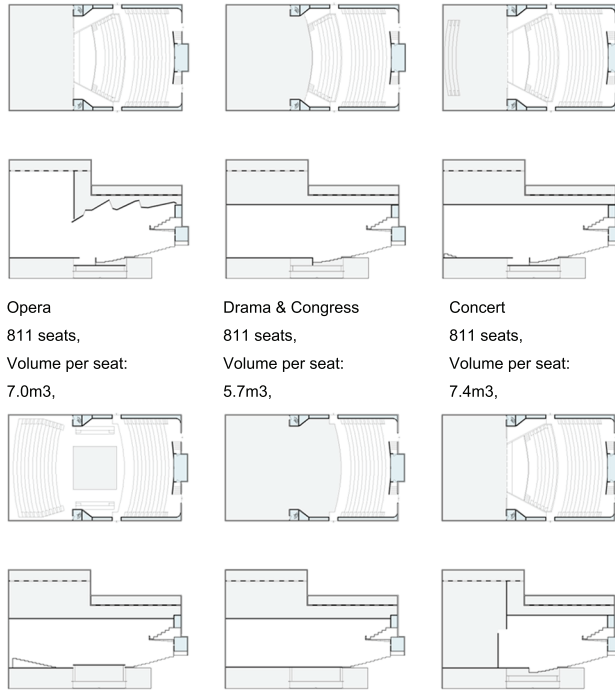


The Solutions



Composite truss frame
 RC beam & slab Main truss frame
 Transfer truss Truss slab

The composite truss frame and truss slab of upper part is a whole structural system, together with the large performance hall, are supported by reinforce concrete stripe core (service and vertical circulation), columns and 500mm wall.



Opera
 811 seats,
 Volume per seat:
 7.0m³,

Drama & Congress
 811 seats,
 Volume per seat:
 5.7m³,

Concert
 811 seats,
 Volume per seat:
 7.4m³,

Arena
 847 seats,
 Volume per seat:
 7.3m³,

Dance
 625 seats,
 Reverberation time:
 1.5 - 1.8 S

Movie
 811 seats,
 Volume per seat:
 5.5m³,

The configurations of performance hall can adopt to theater,dance,movie,conference and music, through the usage of retractable tiers seats, adjustable ceiling , double side reverberation boards mechanical stage sound and lighting sets



Usage of mechanical parking with 304 cars' capacity is the solution fitted in this project, saves the space and resolves the car parking in the site at the same time.

The Area:

Total floor area:15031.1 m²

Build area :2591.9 m²

Semi-outdoor mezzanine floor area:1604.7 m²

(Not included in total floor area)

Basement floor area:

7446.6 m²

