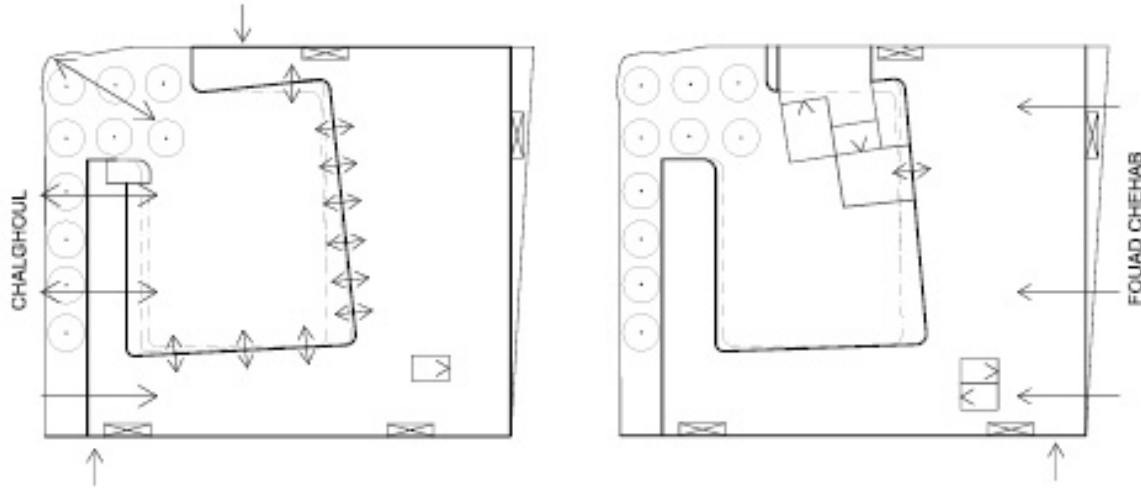


Part of the city, formed both as a shield against environmental noise and traffic, and as a shelter from the strong sunshine, the House for Arts and Culture is a white concrete structure, on the outside a “cultural display” for digital and physical exposures and a “cultural oasis” with ambiguous notions of outdoor space and enclosure from within.



Entering from the Chalhoul street, through a “riddle” of trees or through the café and bookshop easily accessible from the street, the visitor reaches a big open air plaza, vertically altering in size, embraced and connected throughout the building by a series of rooms for creativity of different size and character. The courtyard is the heart of the “cultural oasis”, a place for unexpected meetings, for the established and not yet established, where formal and informal cultural events share space and permeate the activity of the house. With a variety of entrances the courtyard is linked to the main reception hall, the cafeteria/ shop with an outdoor bar and the training rooms for workshop each with adjacent smaller courtyards. A big flight of steps leads up to the performance halls where the landing itself may function as an outdoor stage.



The suggested House for Arts and Culture is regarded as a frame for the activity, where the variety of choreographed movement, the daylight and the attempt to integrate separated functions in the building offer different ways of interaction and interpretation. The concrete facade is a background for displays towards the city and a structure for greenery growing in the courtyard and on the roof. While almost all wall surfaces inside the building are white, coloured floors and ceilings and strategically controlled daylighting give the interiors a warm glow.

Ground Floor

Level of the courtyard, consisting of cafeteria/shop, reception hall, training rooms and workshops. The main reception hall is a sequence of connected open spaces for bookshop, ticket office and reception/information, linking the bigger volume facing the mountain and the highway - containing education, exhibition and performance rooms - with a smaller volume facing the city centre - containing café/restaurant/shop and administrative rooms. A 6 meter high concrete wall, for video displays and projections, along the reception hall, serves as an extra "window" showing the activity in the house as well as outside. Rooms for workshops with big windows and access towards the courtyard. A big staircase leads the visitor further up to the exhibition and performance rooms.

Level +31.8 and +34.0

Exhibition room. A lounge visually connected with the reception hall and the plaza. A big open exhibition space, possible to transform, with northern light, insight adjustable with curtains and jalousies. Connection with the back street through a big lift for delivery and the room for workshop downstairs. A long ramp leads from the lounge to the other side of the building where the restaurant and the kitchen are situated.

Level +37.15

Documentation centre and library. The small performance hall, the meeting rooms and the classrooms are gathered around a reception hall. Access from the reception hall to a big flight of steps that leads down to the courtyard. Visual contact with the upper level of the reception hall. The small performance hall has a height of 8.5 m, a "black box" with big doors towards the back street and access to a big lift.

Level +40.15 and +42.4

Upper level of the reception hall and the performance hall. Entrance to the movie theatre connected with the national cinemateque. Dressing rooms. Administration

Level +46 and 43.15

Entrance to the big performance hall. The big performance hall has a height of 20.5 m, a "white box" possible to transform with access to a big lift. Access to a roof terrace. Administration

Levels beneath ground floor (3)

Delivery area and area for storage and parking lots.