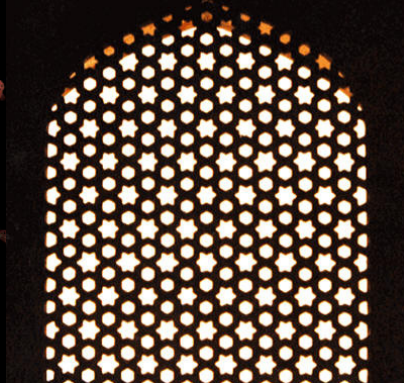
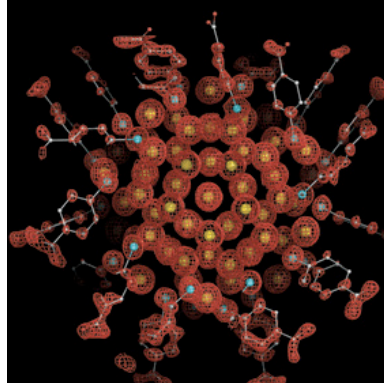


Beirut has been known as the foremost city for culture in the Arabic world. However, the central district still bears the marks of destruction.



In spite of the years of war and the total lack of public support, the city's cultural scene is alive and flourishing.

This condition brings to mind the ability of nature to heal and grow in spite all obstacles.

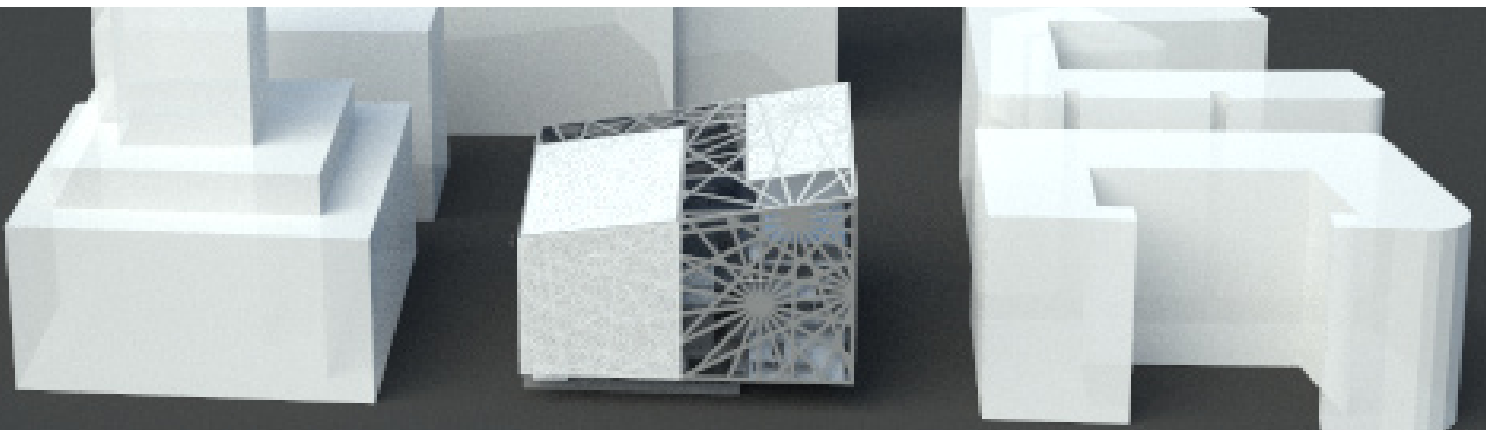


The project is influenced by the notion of patterns, in regards both to the traditional patterns of Arabic building structures, and the inherent patterns created by forces and growth, as well as by pure chance.

Set in the future company of giant building structures, the building needs an instantly recognizable expression as a public building of culture and the arts.



The focus of the programme on flexibility and openness can be tied to the character of the structure.



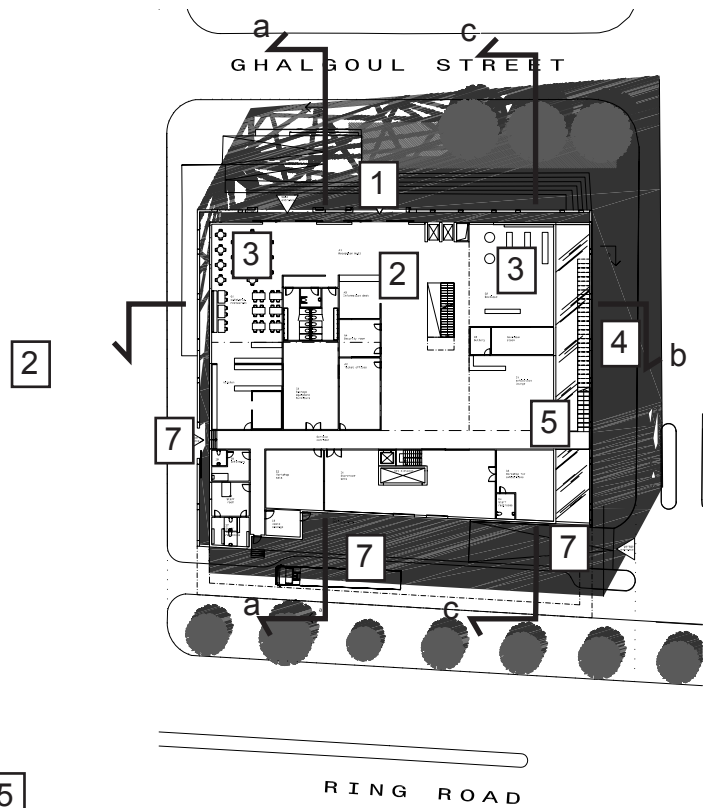
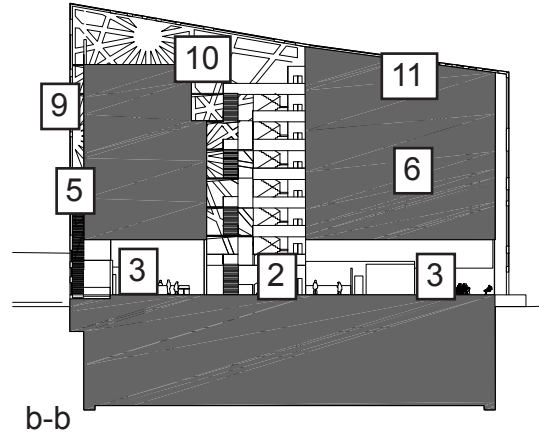
The house consists of a steel shell structure surrounding two major volumes. The space in between the volumes is designated to house all transportation and foyer functions. Throughout the building these transports take place on bridges of lightweight steel construction.

Between the building volumes and the outer skeleton is left a gap of 1,5 meters, used for acoustic insulation as well as for balcony functions or an additional stairway. The façade is glazed in the open parts while the seemingly closed parts consist of perforated sheet metal, allowing for example the administration offices the possibility of looking at the view while enjoying sun shading. This surface also envelops the exhibition floors, allowing a natural light to subtly seep through.

1 main entrance is located to the north, facing Ghalgoul street.

Upon entering the building, a visitor would first experience the great void between the volumes. Immediately in front is located the information desk. To each side of this, the Café and Boutique easily accessible. Following the intermediate space one is lead to the main staircase, going down for access to the documentation centre, which is half submerged below street level for easy access. A great skylight window provides it with a calm natural illumination.

4 Passing this stairway and to the left is located the lobby and bar for the exhibition spaces, provided with an additional stairway passage in between the two facades. The two following double stories house the exhibition halls. On the other side of the building is located the large performance hall, which is elevated above the reception and café.



2

3

4

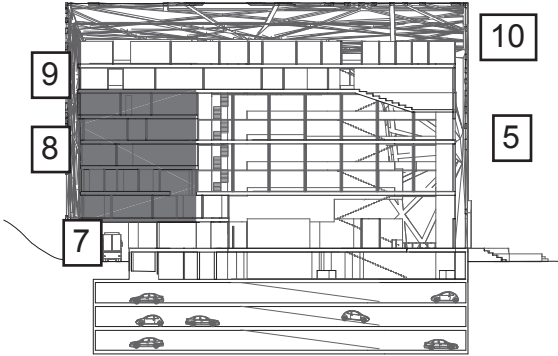
5

6

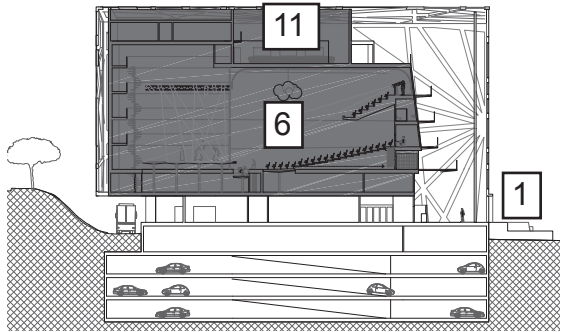


The accesses for garage, delivery and staff are **7** situated along the rear parts of the building, facing the ring road. There is also a staff communication nucleus accessible from the service entrances, notably a set elevator measuring six meters, leading up directly to the side stage. Along this less public part of the building the dressing rooms **8** and workshop spaces are stacked up, the arts workshops corresponding to the exhibition hall floors for interactivity.

The two following floors contain the cinematheque and cinema **9** the administrative offices. **10** and the small performance hall **11**



C-C



a-a

