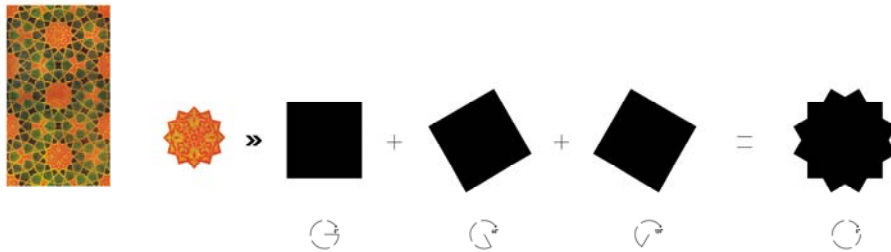


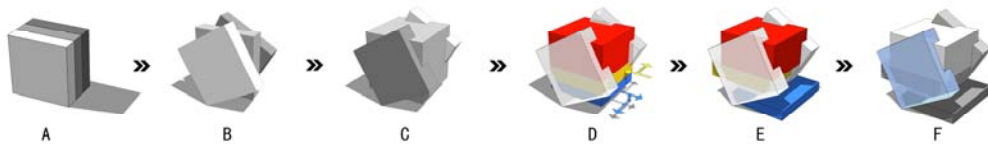
## Introduction

### Concept

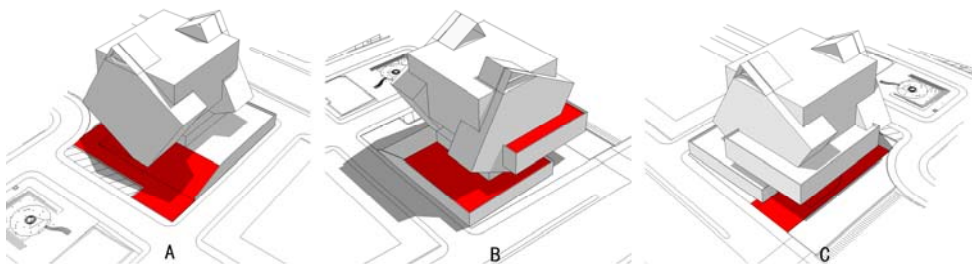
How to build the house of arts and culture, an innovating structure, a place of creativity and dissemination of art and culture in Lebanese milieu, an truly active and productive space? We think the valuation of the internal volume and space of the house should combine with the reinterpretation of the traditional religion Islam elements and the national history experiences. Rather than a large dimensional and generalized space, our design aims to create a multi-characterized and dynamic unit, which comes from the history of Lebanese and lead to a completely new spiritual power. So we studied the history pattern of the Islam, a truly amazing formative world, attempted to establish an overlapping and variation structure for the culture space. (see below )



In some views, the square forms in the pattern representatives reality world. The process of “the square movement” we called, is a symbol of history accumulation, the dynamic geometry and meaningful way lead to build a new amazing unit as fire phoenix, thus the spirit of house of arts and culture in Beirut. (see picture below)



### City public space creation

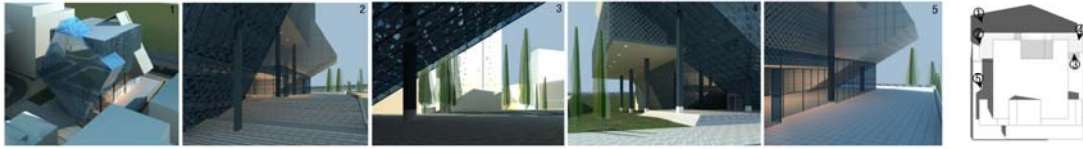


The public space and open space have been designed as an integral part of the case. Picture A: our project can provide a front plaza on the ground level and first level,

facing the city square and around skyscrapers.

Picture B: On the upper level, we turn the lower level roof as looking out bastion, from which visitors could view out over the city.

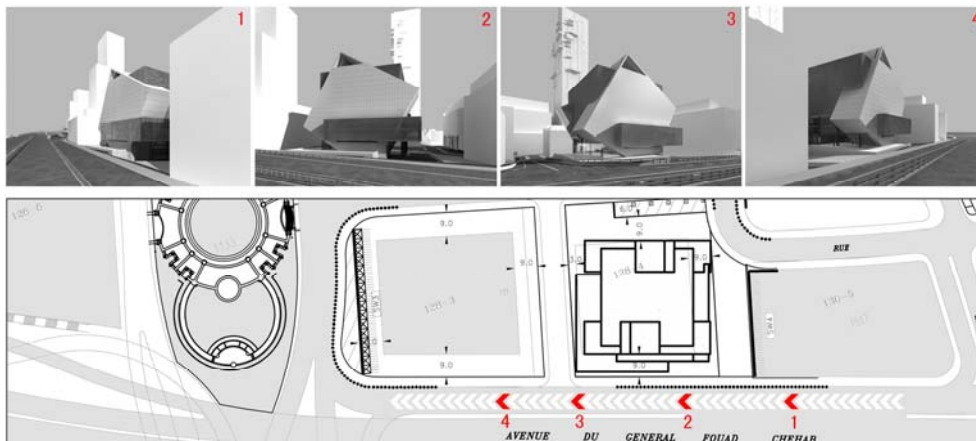
Picture C: the public arcade on the ground floor, for visitor is a site for internal or external views, for staff is a corridor for administration and logistics department.



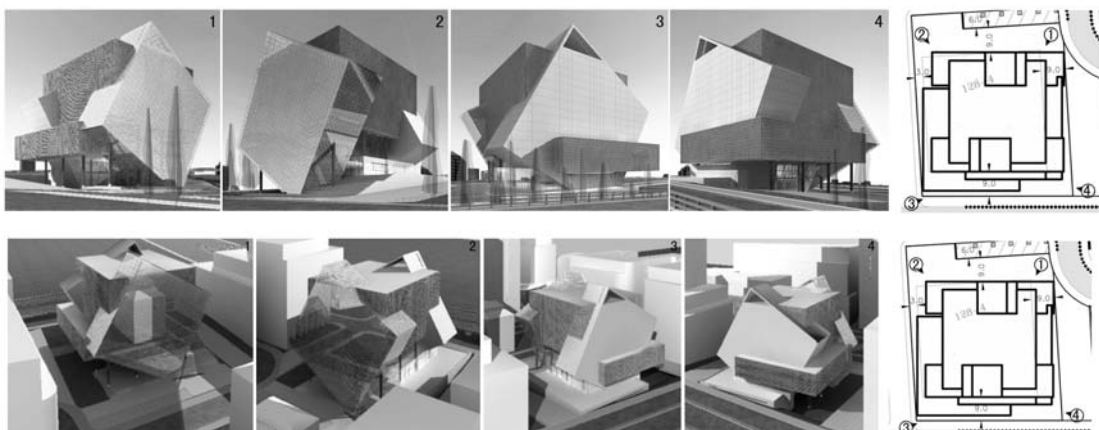
### Dynamic view analysis

Driving on the ring road flyover, people could see the view of our case 1-2-3-4.

The vision of the case per façade should have an interactive relationship with the surrounding area.



View from the street and the city square, walking along the city street, people will see the view 1-2-3-4 (see picture below)

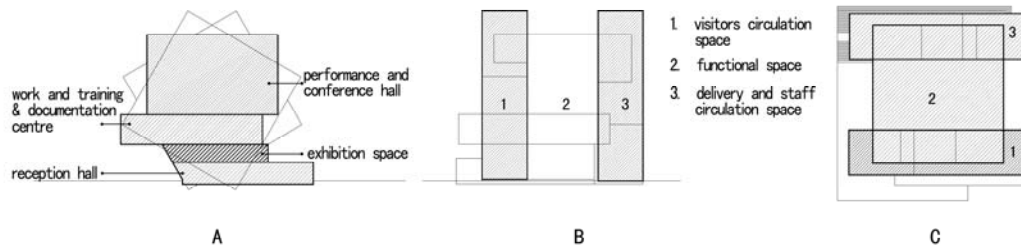


view from the skyscrapers around the competition site. (see picture up)

### Functional and spatial organization

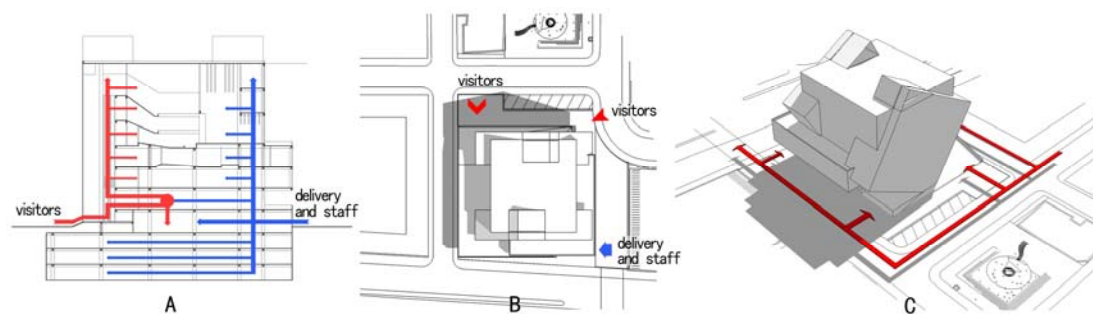
We hope to make the house of arts and culture is easy to use for visitors and delivery or staff. According the site, we try to make the advantage of the vertical functional

and circulation organization. The connection between per level areas suggests continuity and the same time directs the visitor towards the interior of the space. The important exhibition space is arranged at ground level, thus optimizing the convenient continuity of exhibition and simplifying the necessary construction work. Community center entailed organizing spaces around an administrative and circulation core. On the upper level try to generate new meanings and relations in a place the functions as a quilt---a space built of fragments.



By changing its appearance, the design responds to the programmatic and spatial requirements of the complex as well as sensitively react to the Urban location. We made the choice for a free form and overlap geometrical exterior, thereby opting for an innovative statement. The overall shape was defined in such a way that it relates and reunites the existing scale differences of the surroundings. On one side the building is open to the city plaza, while on the other sides the building is more special in style and scale to emphasize it as a central place in the international arts scene.

### Circulation



#### The external circulation

According to the site, design the interior of the premises on north road and northeast, northwest side that it allows visitors come outside extensions.

The vehicle circulation and staff entrance is settled on the southeast of the site.

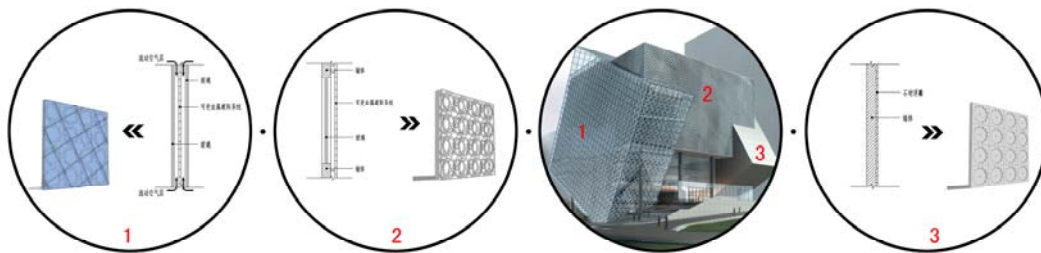
#### The interior circulation

Visitors are lead to the reception and information hall from the spacious steps, then separate into two directions, one to upper performance and conference hall, the other down to the exhibition spaces.

## Technical and Materials

Three main materials: glass, stone, and stainless steel, will give the house more friendly and diverse textures. Curtain façade cover the glass screen to create endless possibilities. The choice of light and natural materials internally also reinforces the house's public function and encourages visitors. Using natural material ---stone and mortar expresses age and history as well as the tale of its birth and human culture. The stainless steel and concrete are used as contracture system. Using different materials in the design could help visitors to be in constant dialogue and interaction with the spatial atmosphere. It also reveals the complexity of different "square world".

Our project will be made of steel construction. We continue our research into the merging of structure and aesthetics, just made the structure is also one part of art. In our case, the construction is considered flexible, allowing for a variation of spatial models. The columns are not only guiding the floors but also the openings in the floors.



1. the mental adjustable shading system been sited between double LOW-E glasses, it protects the core building from radiant heat and admit cooling breezes to flow beneath it and exclude cold winter winds.

2. Wall cladding of mental adjustable shading system that gives greater control while enabling daylight levels and views to be manipulated.

3. Wall cladding of specially processed, graded and faceted stone relief that have a different shine depending on the weather.

Opening in the case allows daylight to enter the space in a ray of light which is further accentuated at the moment when the exterior clad is shadow.

Exterior glass is covered the curtain wall systems that could use or refuse daylight freely.

The simple and purity plan is also a way to save expenses.

Garage and basement in the case is made of concrete, uniform and standardized columns to make the construction cost to be accepted.

code:23818