

THE CULTURE BAZAAR

THE CULTURE BAZAAR is a project that dissolves the boundaries between interior and exterior. Resulting in a strong relation between house and city - creating a space for open exchange of art, culture and ideas.

Most cultural institutions are, traditionally, spatially introvert. The programs are isolated without external relation or influence - depriving them from potential synergy that combined would produce a greater experience.

Instead of isolating the activities, our ambition is to create an open Art and Culture House that can be an incubator for art and culture as well as urban life. A house that invites, and engages, artists, people and urban space to create a public domain for all.



PERFORMANCE HALL

The performance hall is the heart of the building and is a highly flexible space. We propose to place it on street level to create a strong relation between performances, house and urban space.

PUBLIC LOBBY

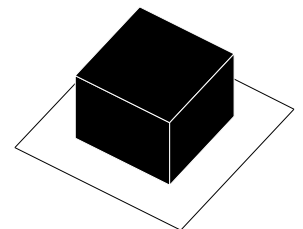
Wrapping the Public Lobby around the performance creates an interface between the performance hall and the surrounding urban realm. Similar to a traditional bazaar, it serves as an intermediate space that encourages interaction.

CONNECTIONS

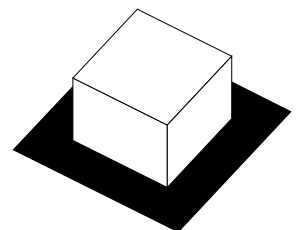
Doing so, allow us to exploit the flexibility of the Performance Hall to engage the Public Lobby, and further, the surrounding urban space. The performance hall can shift its character to accommodate any activity - from formal traditional events to informal daily hapenings. One day it could host a classical play while transform itself into a flee market the next. The limits are only within the user's creative imagination.

THE CULTURE BAZAAR

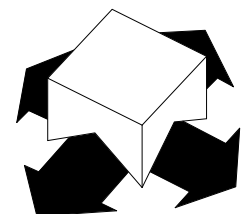
The Culture Bazaar will become a place that invites, embraces and engages the surrounding urban spaces in its plays, concerts, poem recitals, exhibitions, events, conferences, debates, dances... It will become a cultural market place facilitating the interaction between city, artists and public making it an integral part of the urban life.



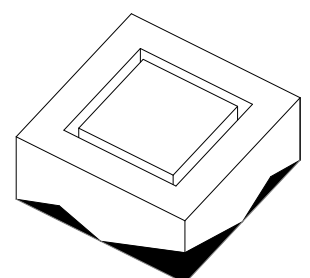
PERFORMANCE HALL



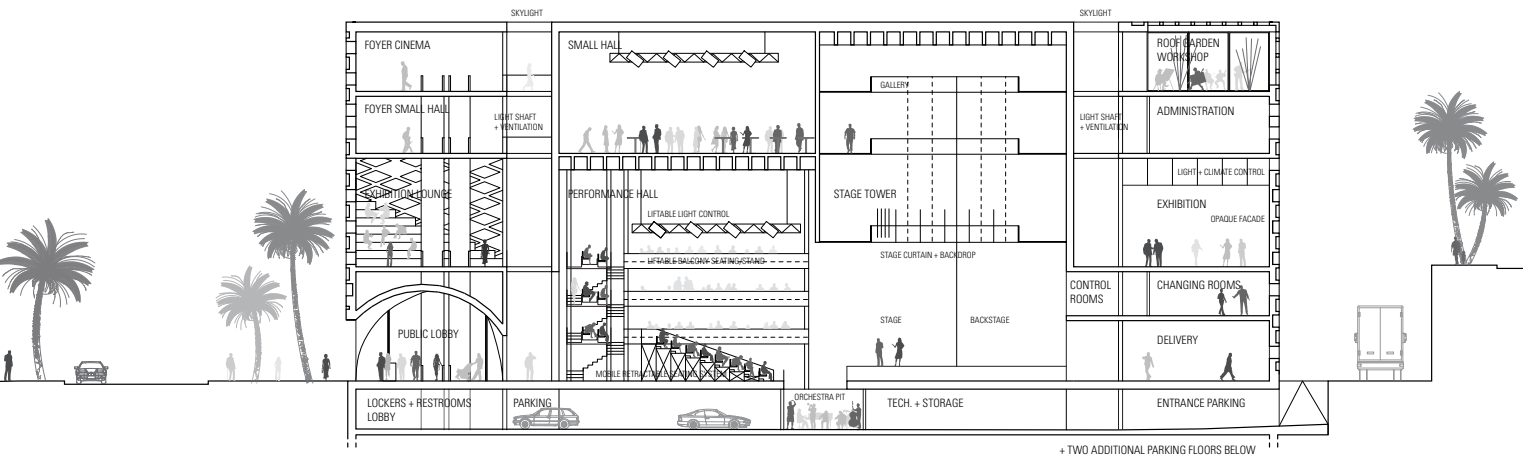
PUBLIC LOBBY



CONNECTIONS

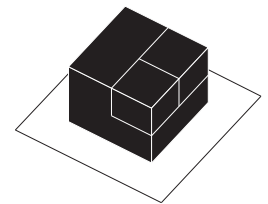


THE CULTURE BAZAAR



THE HALLS

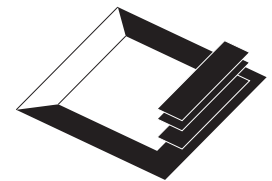
The Halls (cinema, large and small performance) are organized as one compact and efficient “theater machine”. It is optimized to ensure efficient and rational installations and circulations.



THE HALLS

PUBLIC LOBBY

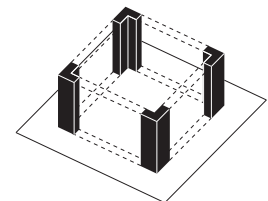
The circulation core and skylight is located in the gap between performance hall and surrounding program. It ensures abundant daylight while providing efficient access for both staff and public. In addition to daylight, the skylight creates natural ventilation ensuring comfortable indoor climate in all parts of the building.



PUBLIC LOBBY

CORES + SKYLIGHT

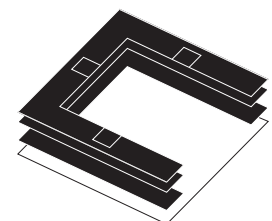
The programs on the upper floor (exhibition space, documentation centre, workshop etc) are simply organized - around the stage tower along the facade. A width of 9 meters ensures all spaces abundant daylight and views out. The simple floor plans offers extensive flexibility and efficiency while creating rational circulation around the entire U shaped floor plan - starting and ending in the public lobby. The top floor offers generous roof gardens with daylight gently filtering through the porous facade pattern.



CORES + LIGHT SHAFT

UPPER FLOOR PROGRAM

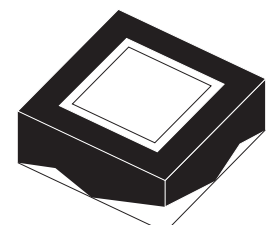
The programs on the upper floor (exhibition space, documentation centre, workshop etc) are simply organized - around the stage tower along the facade. A width of 9 meters ensures all spaces abundant daylight and views out. The simple floor plans offers extensive flexibility and efficiency while creating rational circulation around the entire U shaped floor plan - starting and ending in the public lobby. The top floor offers generous roof gardens with daylight gently filtering through the porous facade pattern.



UPPER FLOOR PROGRAM

THE FACADE

The programs on the upper floor (exhibition space, documentation centre, workshop etc) are simply organized - around the stage tower along the facade. A width of 9 meters ensures all spaces abundant daylight and views out. The simple floor plans offers extensive flexibility and efficiency while creating rational circulation around the entire U shaped floor plan - starting and ending in the public lobby. The top floor offers generous roof gardens with daylight gently filtering through the porous facade pattern.



FACADE

