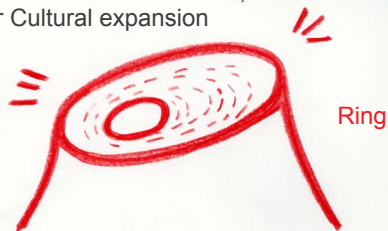


For social communication,
For Cultural expansion



Free Activity field opening to the sky

SKY VOID

Beirut, Lebanon is the fusion culture city between eastern and western.
In 21st Century, it is important to create the Integration and Respect among the different culture, country, and religion.

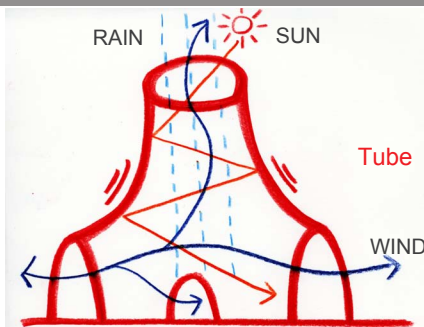
House of Arts and Culture should be the universal symbol of the cultural fusion;
Circle shape is the fusion symbol, <Open Ring>.

In Beirut is rectangle block city, Circle is special shape; it is like mosque and public park which is healing space, and House is also the healing space with Arts and Culture.



The beauty of Natural Random Reflection / Overlay

PARTICLE VEIL



Feeling the pure nature elements before meeting Arts and Culture

AIR POD

We propose the free spiritual space, <Sky Void>, <Air Pod> which we can feel the fluidity of the Natural Light, Wind and Time. By Framing Natural elements, we can have <Katharsis> the discovery the pure beauty of the natural elements at <Air Pod>.

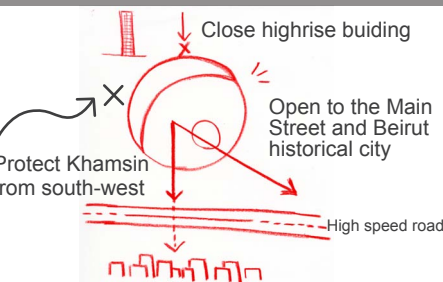
In the spiral-slope-space we can feel the pure-particle of Light and Wind passing through <Particle Veil> sensitively.

The approach to Arts and Culture spaces (Air Pod, the Spiral slope) are very important to have experience pure-natural elements (Sky, Water, Light, Wind), because it is necessary for us to discovery new real life sense with meeting Arts and Culture.



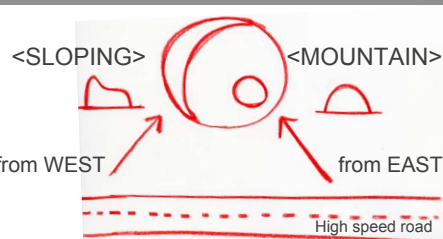
HOUSE is Culture Activator of the city in the air.

SKY VOID meets HIGHWAY

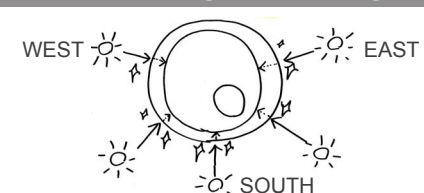


Open to the Main Street and Beirut historical city

OPEN to SOUTH-EAST

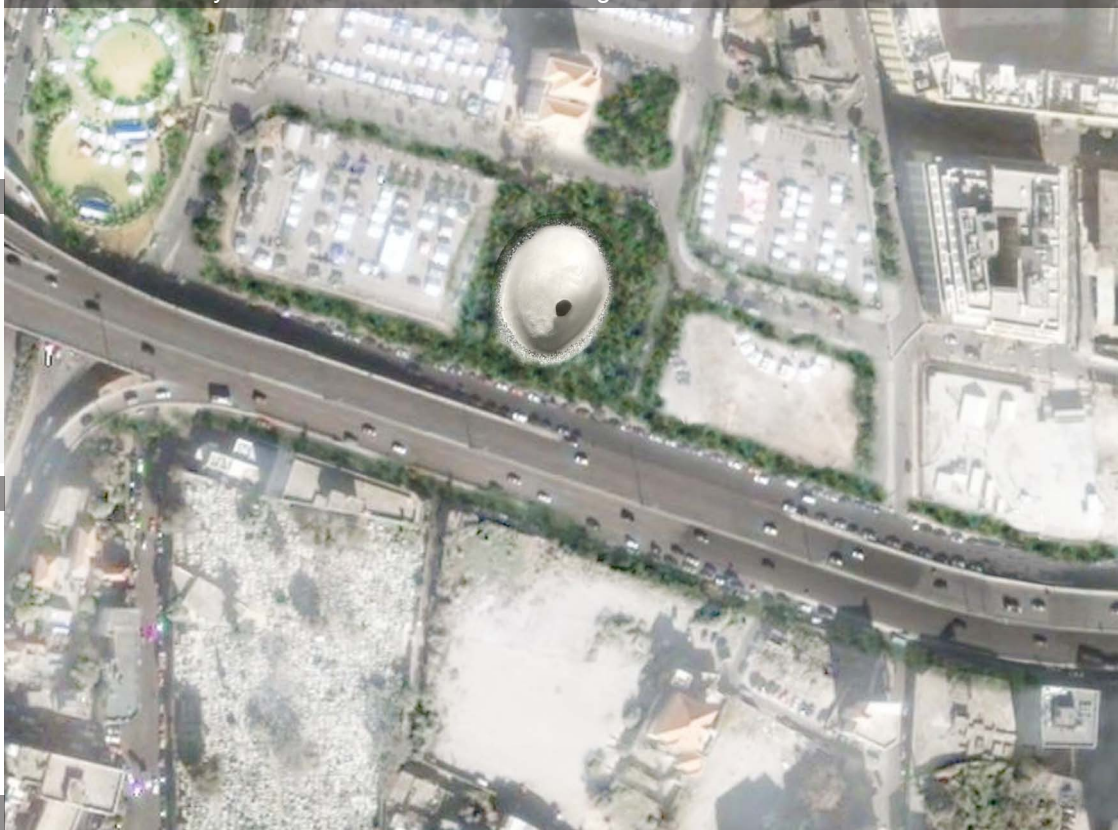


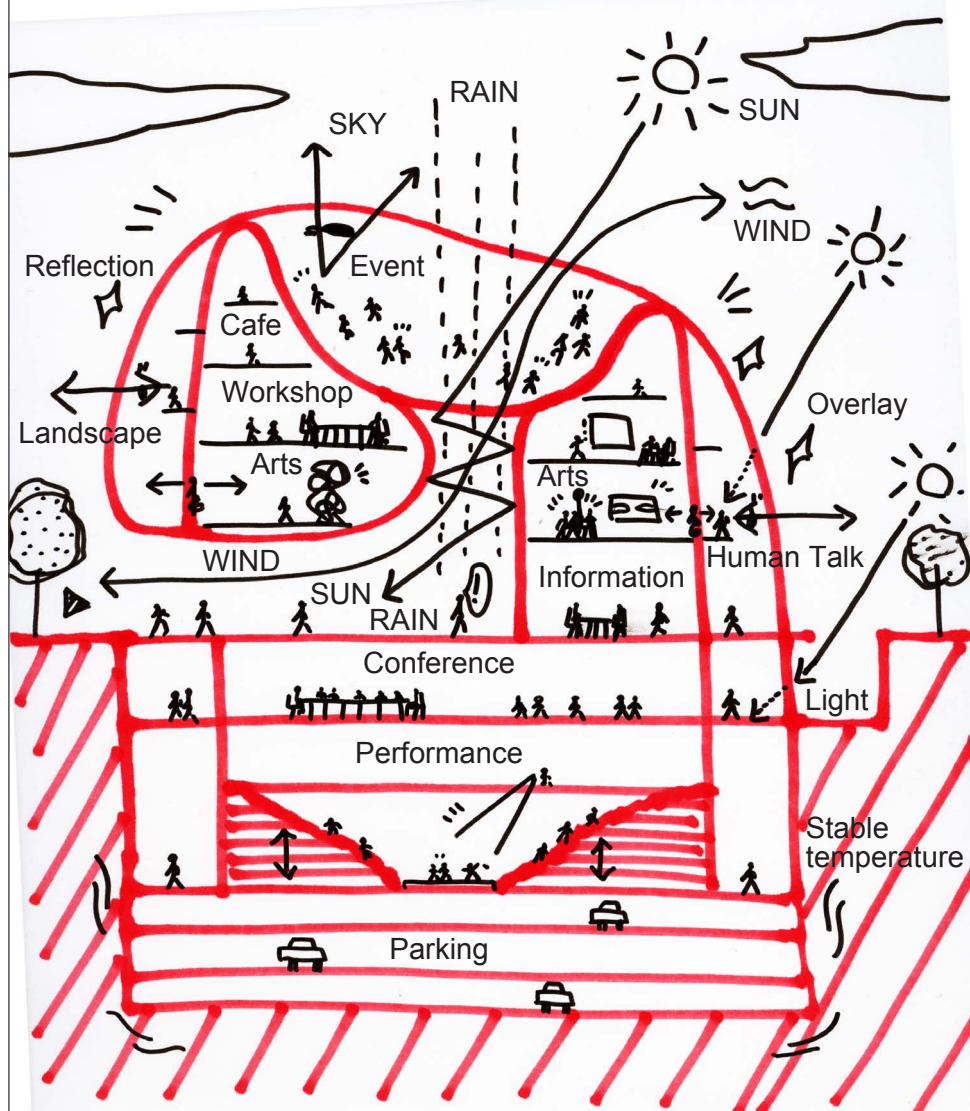
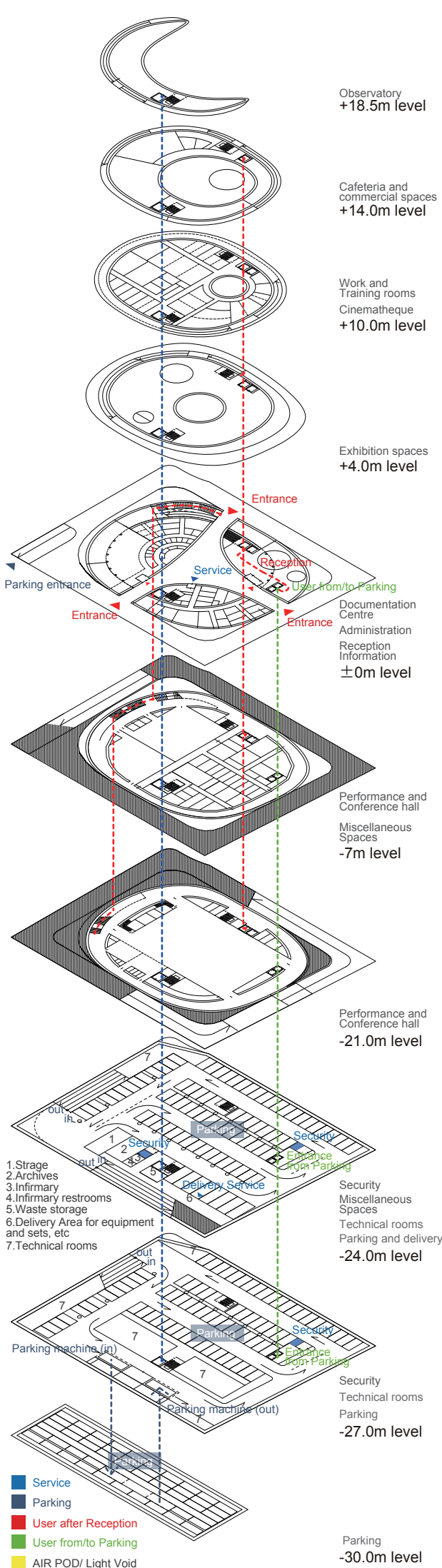
DIFFERENT SHAPE / ANGLES



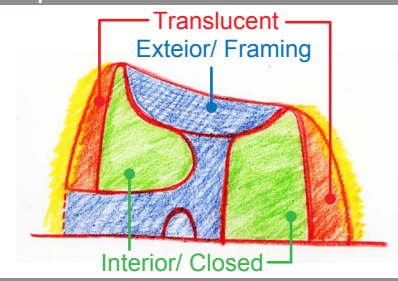
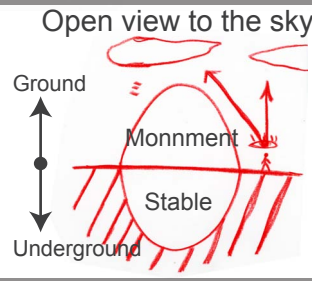
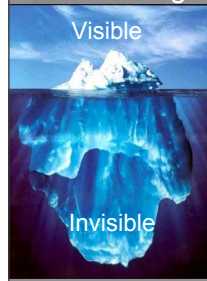
HOUSE is seamless circle façade volume, and it is changing the various expressions according to the movement of the Sun.

HOUSE with SUN MOVEMENT

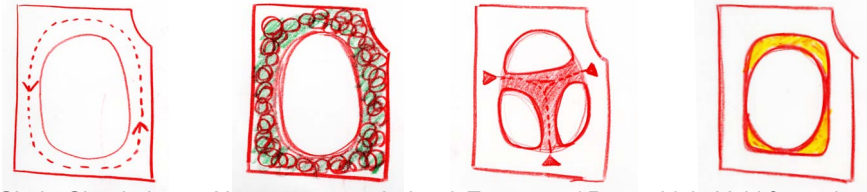




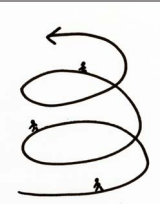
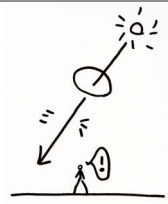
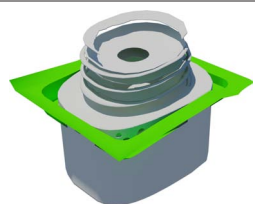
Integration between the relationship of nature and human activity



House is symbol on ground and, House is stable natural environment on underground.



Ground level Landscape for Urban and Architectural planning

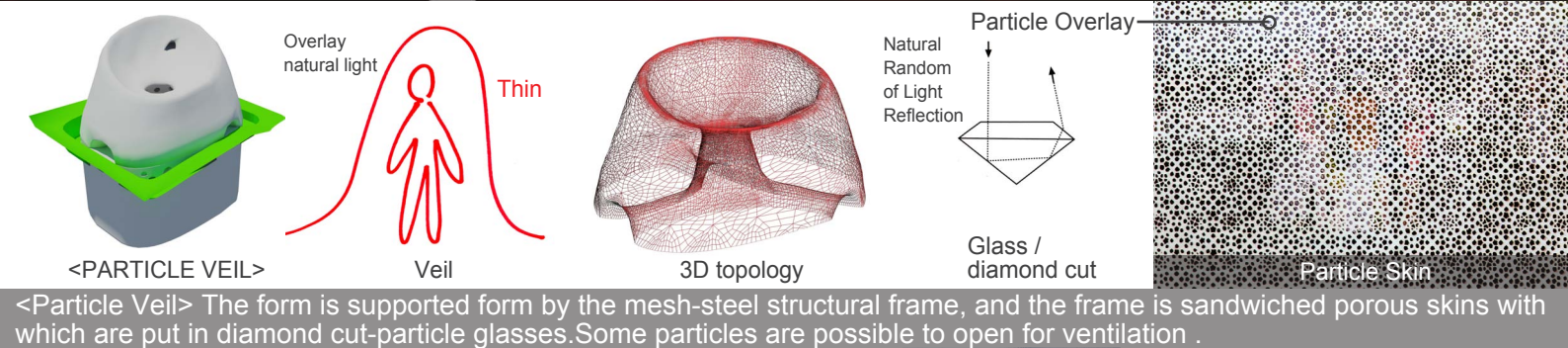
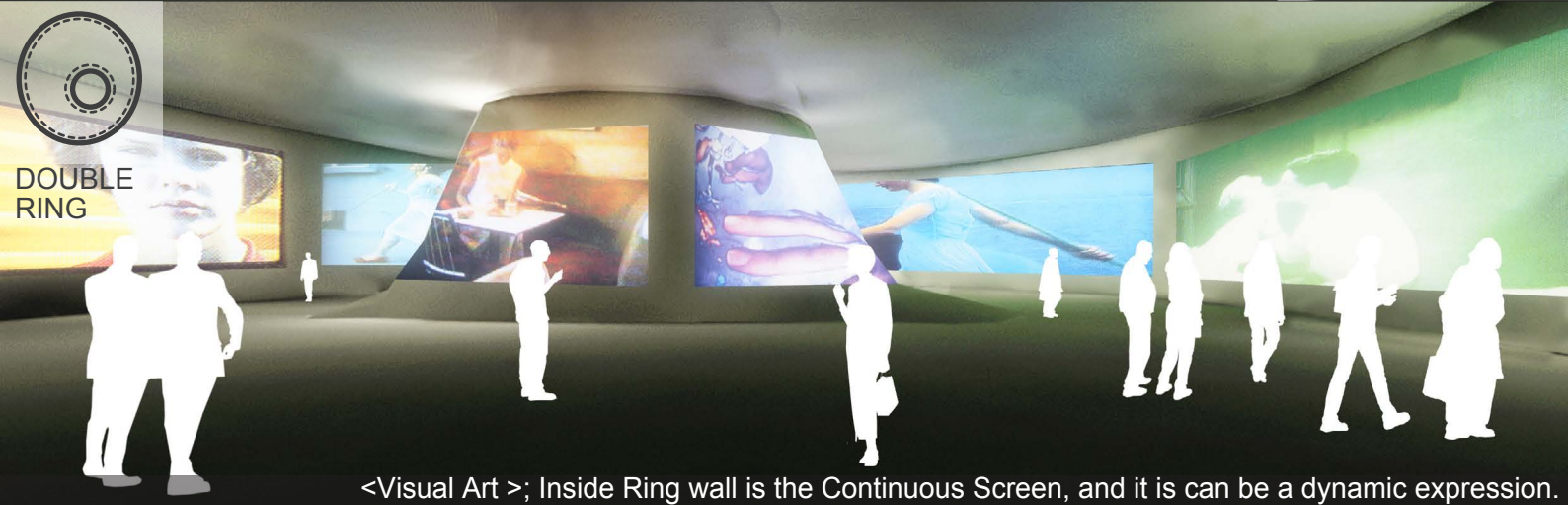


Porous Shell is Ring-interior space for Arts and Culture with the Spiral Slope as approach.

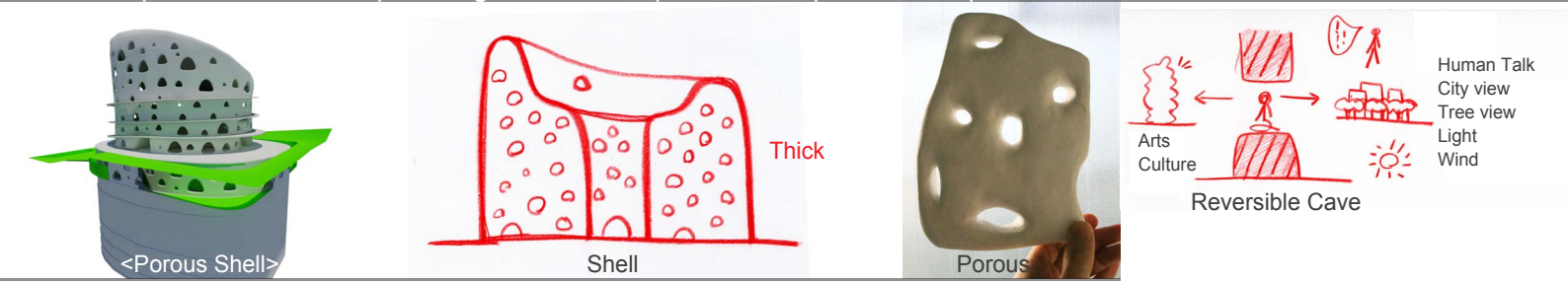


White mountain is public symbol in Beirut, Lebanon.

Horizontal and Vertical Circulation Diagram

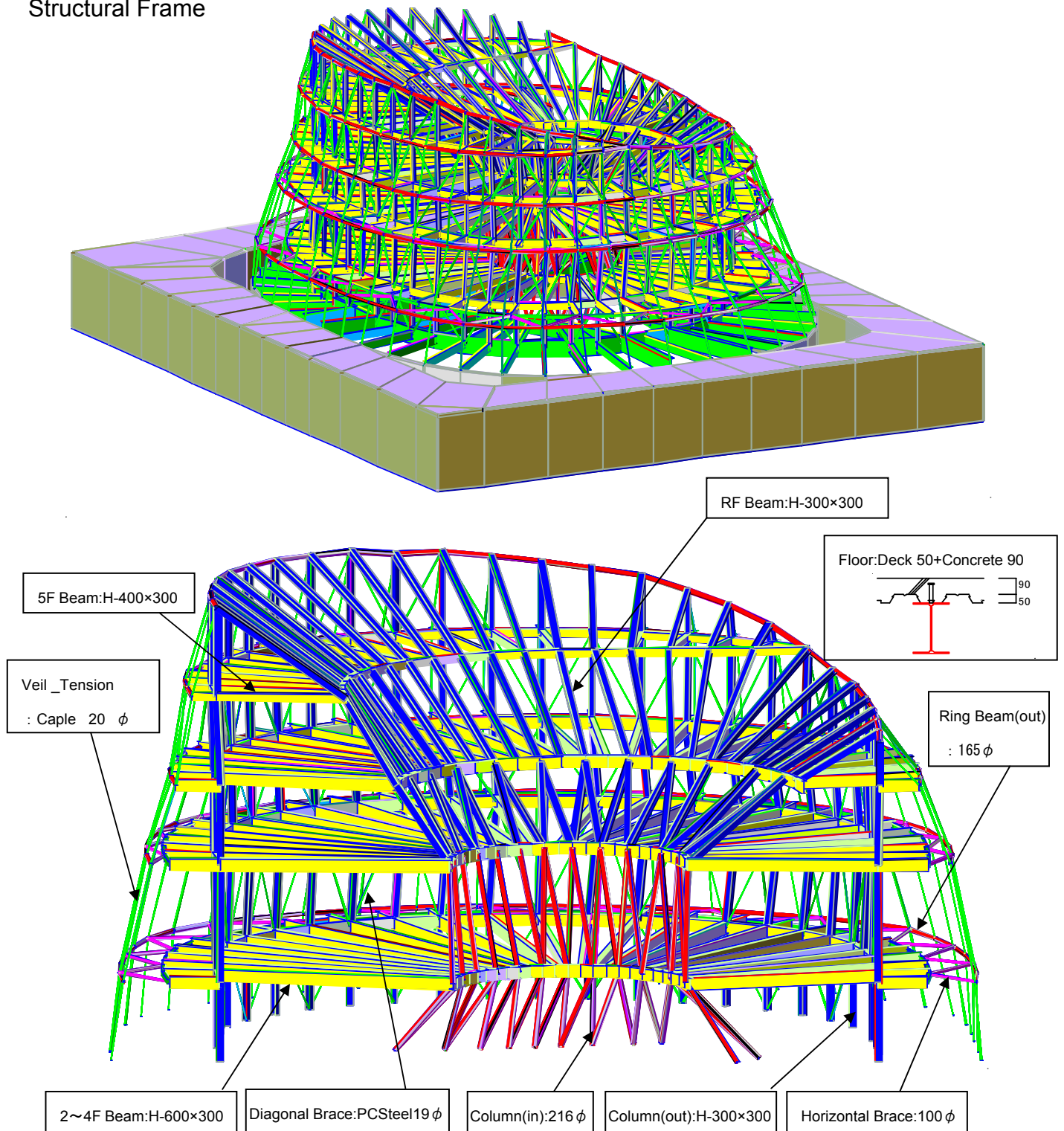


<Particle Veil> The form is supported form by the mesh-steel structural frame, and the frame is sandwiched porous skins with which are put in diamond cut-particle glasses. Some particles are possible to open for ventilation .



<Porous Shell>has reversible cave to face both sides. One is for Arts, Culture, the other side is Human Communication, Landscape and Nature elements.

Structural Frame



Ground level structure is steel framework structure.

Underground level structure is RC (reinforced concrete) structure.

Upper level volume is light on ground, Lower level volume is stable on underground, the cost performance is good.

Steel framework structure is constructed by

Columns (out); H 300 x 300

Columns (in); 216 ϕ

Beam; H 600~300 x 300

Brace; 19 ϕ

These structural elements keep arranging in their balance,
And creating the porous windows is possible.

Veil façade is supported by PC cable.

PC cable has primary tension,

And it is possible to keep against the weight of the architecture itself and the wind power.

Underground is constructed by big beam of basement,

And the performance hall of basement is possible to have big space without column.

Underground parking is constructed by RC column 600x600 @5000mm Grid,

And it is rational construction for the cost.