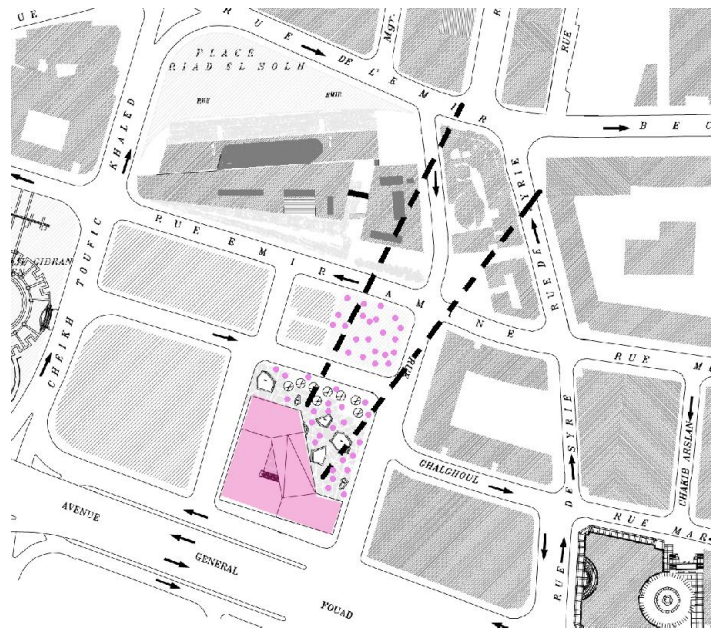


The House of Arts & Culture

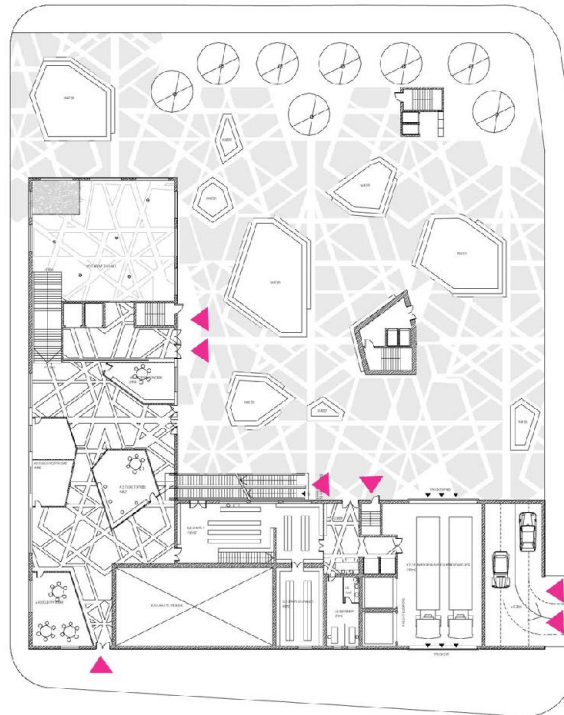
At the time of solving the problematic of the program and the space the doubts invade us, how to make a building in a place in construction in which we ignored the nature of the neighboring buildings? It is responded with an analysis of the urban context in which we valued more the lots that are going to be without constructing rather than those that are going to be erected, that is to say it understands the emptiness like the urban space necessary to transform a city and to favor a coexistence decreased by the violence, is understood the emptiness like the main space of the city and the one that is going to be able to improve the life of its inhabitants.

This way the building is buried with its audiences and parking to create a public space of access surrounded by pools and vegetation and shaded by the form of the same building that diagonally communicates with the annex garden that open a space perspective towards the historical center of the city and the Mediterranean.



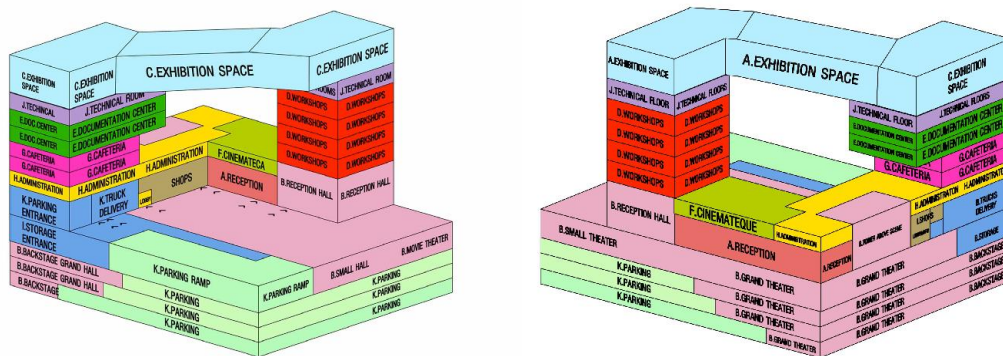
Urban Context

Thus The House of Arts & Culture is based like an inhabitable sculpture in which the program is piled up until ascending to the allowed peak altitude and to culminate in a public cover that it is also a viewpoint of the city, a place so that the city sees itself and that a garden of sculptures can as well be a Sunday market but also or simply a wonderful place for the interchange between its inhabitants, which is the greater form of sustainability.



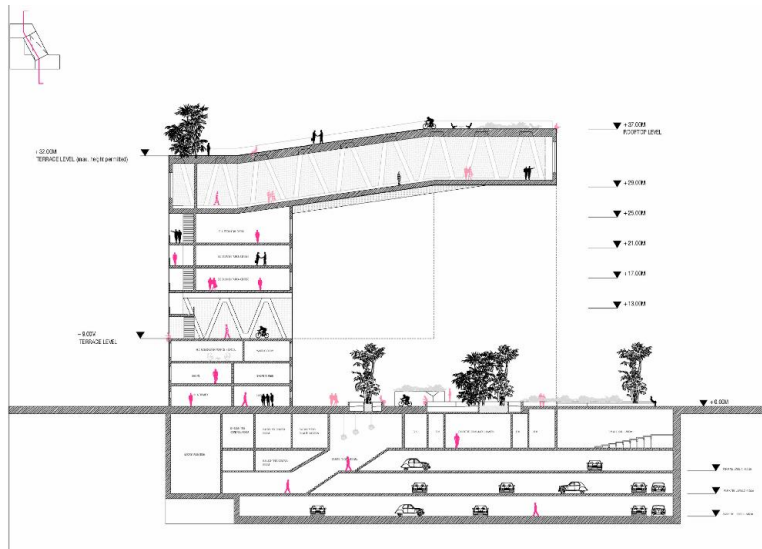
Ground Floor Entries

The proposal invites in its outside to be explored and to be circulated, and it will become a contemporary symbol of art and of coexistence, a point of reference and of encounter, attracting visitors to its rooms and spectators to its concerts, approaching the artistic disciplines the city and their inhabitants with the enormous potential of modernization and illusion that this can contribute to a city shaken by the violence and orphan of public space.



Program Distribution

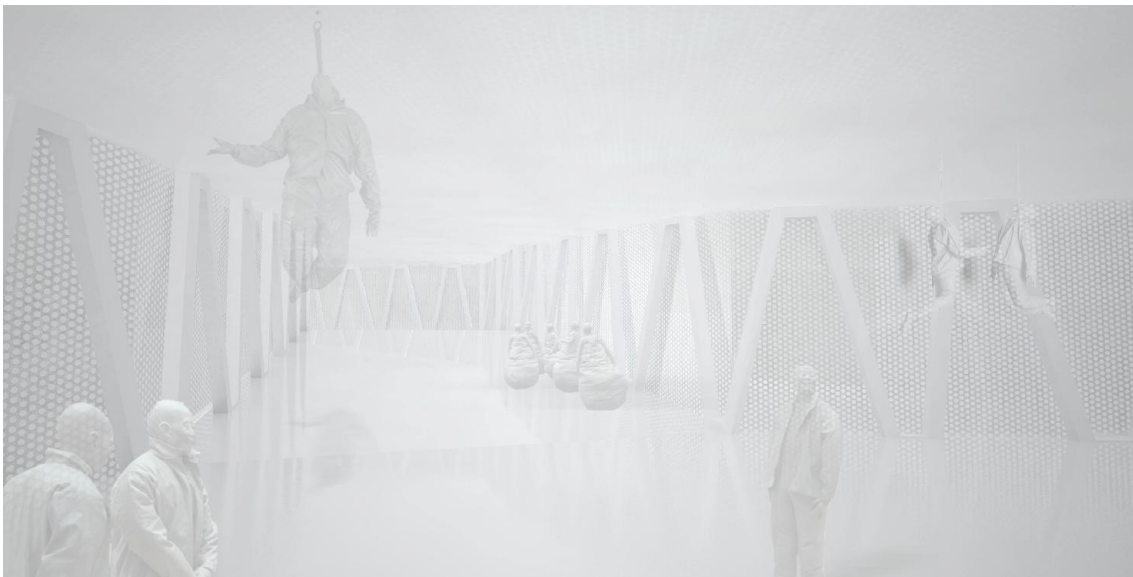
Thus on that public place surrounded by pools and vegetation, stairs and nucleus are transporting us to a first terrace of 9 meters height in which they are supported two towers with a program of libraries, cafeterias and workshops that use that open terrace like extension of their activities (reading, painting, dancing, theater, music...)



Cross Section Above the Art Exhibition Bridge

The South tower culminates in one second terrace at the height of 32m, the peak altitude allowed to the south whereas the north arrives at 37m height being united both space for art that could also use its roof like an opened-exhibition place above the clouds with a view to the Mediterranean Sea.

If walking on the museum we reached the sea how we are going to resist to visit it?



Exhibition Spaces