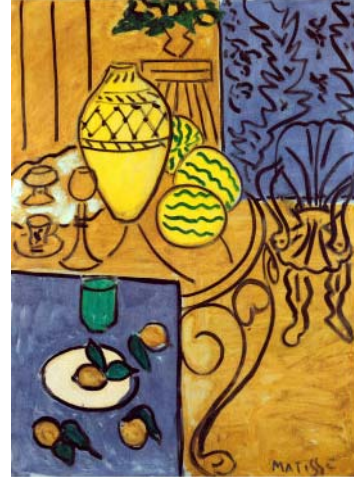


It is evident that a people are by design the collective manifestation of their past, and a vivid reflection of their future. Culture is the central driving force behind this phenomenon, and truly defines the point of intersection which we are all connected to. The eternal city of Beirut has been the epicenter of cultural fusion throughout its millennia long history, and our cultural center is to represent Beirut with the same vision that founded it as a central station in the history of civilization. The cultural center will embody the traditions, heritage and culture exclusive to Lebanese society and act as the center piece for intellectuals from all walks of life to enjoy the tranquil serenity that our dynamic design will induce. Through the use of simple geometry we intend to create a self-effacing structure which provides its devotees with an elegant and peaceful setting. We will provide our patrons with two unique observation points projecting our eloquent past “Maison Rose”, and stimulate their enthusiasm for an affluent future with the “Landmark tower”. Our center has been designed to act as an intrinsic part of Lebanon, paying homage to the beauty and history of Beirut city.



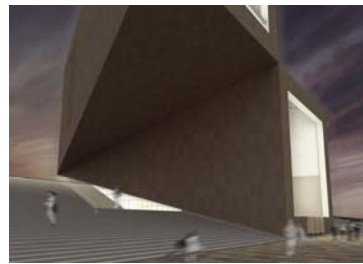
To understand the reasoning behind our design, we must first look at the conceptual ideals of its locality and the society it is destined to represent. The true goal of architecture is not the closed volume. Rather, its defining quality lies in the spatial relations that the built work succeeds in establishing with its surroundings. The cultural center’s design is to act in absolute harmony with its surroundings; the structure does not only act as a place for new ideas, knowledge, and fruitful acquaintances but will also act as a vantage point to remember our precious past and drive the imagination for the future. In principal, fortifying our cherished heritage and culture, while creating equilibrium between both the urban and pedestrian scales. The structure will provide a sense of comfort throughout its different sections, consummated by its open voids which are born from an analogous foundation. The link between unity and diversity has always tittered on a centripetal point of connection, and it is this point that we wish to reinforce and safeguard for it is the only bond which will hold humanity within the frame of communal beginnings and ends.



The architectural design intends to create excellent outdoor grounds for a variety of recreational activities while keeping our patrons at absolute ease by employing coherent pathways and entrances throughout the facility, making their movements exciting and sensuous. The building will be entirely covered in domestic stone walls.

The center can be accessed at three different levels:

1. The main entrance located at the street level (ring), which allows for fluid access to the entire building and points in the direction of the city.
2. A covered entrance and gathering area from the grand stairway to provide pedestrians with quick access to the exhibition halls and other facilities.
3. The lower entrance located at the piazza, on the lower façade. Visitors will pass through revolving stone doors which will provide access to the amphitheatre.



Public areas:

- The piazza located on the pedestrian level will act as grounds for communal activities, street performances, and recreational activities.
- The grand stairway is designed to be a casual retreat for outdoor enthusiasts and act as the pedestal for the entire center.
- The rooftop stairway located on the top of the lower section can be accessed from the upper floors and will also act as an outdoor escape for gatherings and performances.



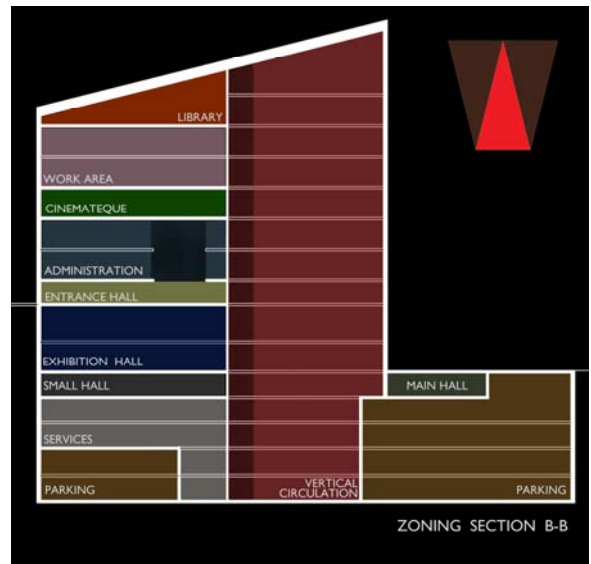
The interior space in the center is divided into three respective sections:

1. Central section.
2. Lower left section.
3. Upper right section.

All dedicated to providing devotees with various amenities and facilities in order to accommodate for their every possible need.

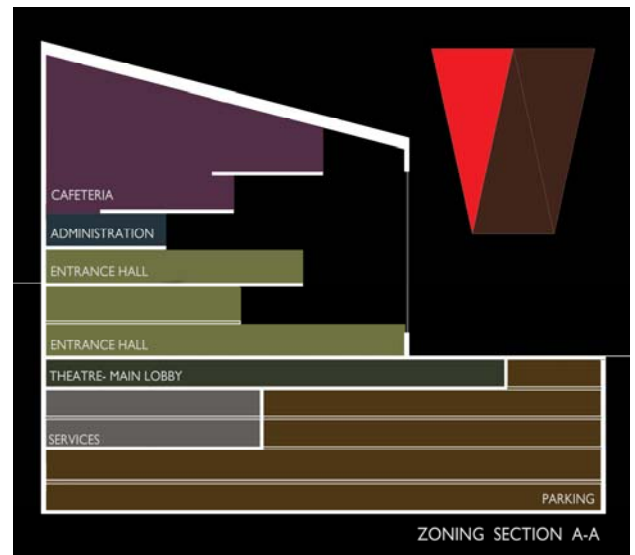
Central section:

The main lobby will grant access to the entire building through stairwell and elevators. The central section of the building will also act as the hub for administrative support and services. This area will also provide space for administrative offices, seminar rooms, and additional exhibition halls. The top floors are an extension of the library located on the upper section of the project. The main entrance will also provide swift access to the grand theatre's main lobby and include the organizational functions of the center.



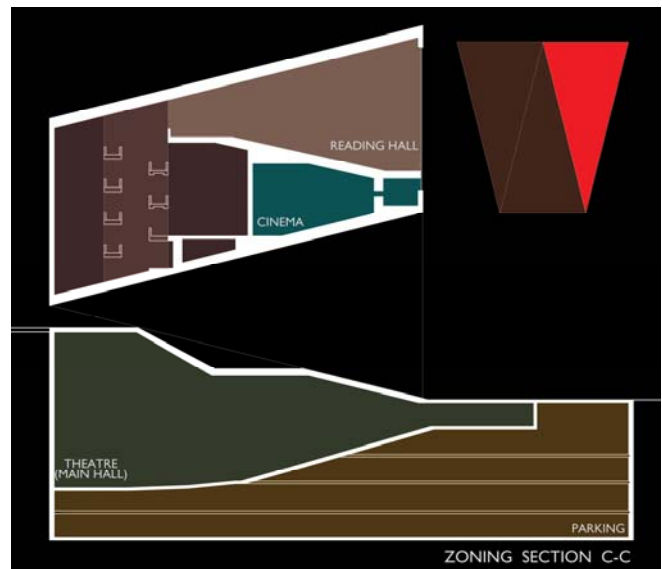
Lower left section:

The entrance hall will provide an excellent location for gatherings, and serve as the central meeting point for the larger crowds making use of the many facilities. Hanging slabs overlooking the picturesque view of the “Maison Rose” through the frame-like façade which will house the cafeteria. The lower levels will include two fully equipped exhibition halls, conference areas, and lounges. A stairway will provide easy access to the grand theatre's main lobby connecting this section with the areas below. Office and commercial space can easily be incorporated to all levels of the sector.



Top right section:

We are dedicating this area to the school of knowledge by integrating an outstanding library with an exclusive design, including a variety of comfortable reading spaces for our devotees to enjoy. The space will provide for an outstanding view of the city across the piazza and will also house a medium sized cinema which can be employed in various ways, connected to the cinemàteque located on the fourth floor.

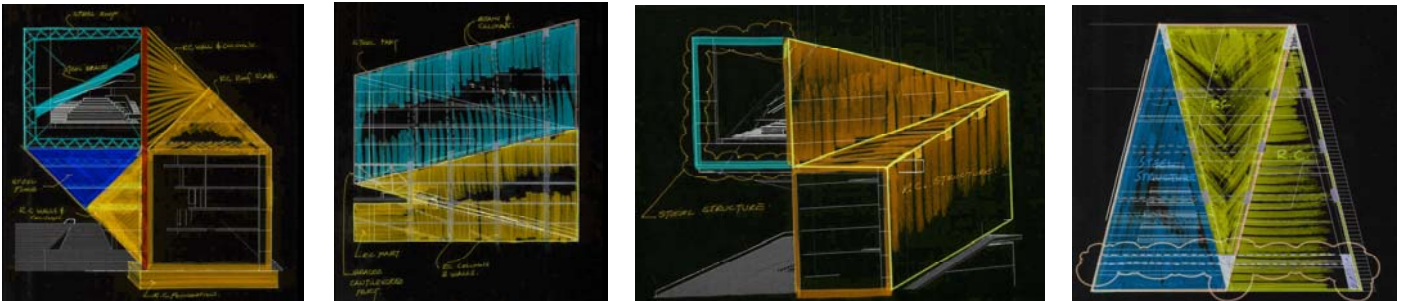


Basement:

The lower section of the center will house service and maintenance areas for administrative use. This will also include a fully equipped grand theatre playing host to a wide variety of performances which.

- The basement will provide parking space for vehicles.

Structural concept:



The House of Arts & Culture will provide pristine and unique accommodations for artists and intellectuals of all kinds. The spirits of unity and diversity will perforate through each and every space, creating an atmosphere of infinite possibilities by in visioning limitless imagination of the future, without forgetting the lessons of the past. Lebanese society has survived on a fragile point of universality and our structure will provide the means for people to safeguard that very point by accentuating the importance of heritage, tradition, diversity, and most important of all unity!

