

design description + detailed table of space

LYRICS OF MULTI-CULTURE _THE ART OF HOUSE

the architectural lyrics for a re-inventing Beirut

2238by

The Architectural Lyrics for a Re-inventing Beirut



Lebanon is a land of hidden wonders stretching between eastern coast of the Mediterranean Sea and Jebel Libnan ash-Sharqiyya. Its surprisingly delightful quality is a major discovery offered to any visitors who are willing to pay tribute to a country not always appearing on international cultural agenda. The competition team is among these curious but sincere visitors. During a visit in search of inspirations, team members right inside the country were fascinated by an extra-ordinarily rich context. Magnificent Roman ruins in Baalbek find traces of the region's vibrant history. Equally historic, harbour of Byblos reminds the long tradition onto the sea by Lebanese people. For a non-typical illustration of the unique co-existence of urban chaos and order in the Middle East, where else can be better than wandering in Tripoli's old city and its colorful souq? Yet, without being inspired by Lebanon's capital, any experience in the country is incomplete.

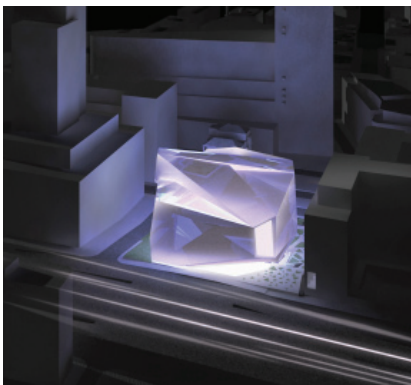
Beirut's multi-cultural character is one of the most impressive scenes of the country. People of different beliefs and ethics live here conscientiously and respectfully building a phenomenal contrast in harmony. These cultures and the hybrid of them mark the city with great space and grand buildings. Especially pre-dominant in the downtown, the ambition in maintaining and enhancing a dynamic city built profile reassures the world that Beirut will continually prosper, despite difficulties arising from internal or external. It is with this faith that Lebanon provokes its people to never stop evolving themselves into new looks throughout ups and downs in history. It is also with this spirit that Beirut commits to take the leading role in shaping the country's future by confidently re-inventing the city itself. The capital, in a context full of such passion and energy, deserves a cultural landmark to speak for its pride.

Concept

The House of Arts and Culture (the House) must be unmistakably presented as a national pride of the re-inventing Beirut. Form and details are composed into a piece of poetic architectural lyrics which should praise Beirut's past, present and future.

In architectural terms, these lyrics are to:

- Spatially, connect city notes;
- Culturally, celebrate city events; and
- Spiritually, glorify city life.



Urban Design

Historically the very centre of Beirut lies between commercial Rue Weygand and busy Rue Emir Bechir. The convenient but under-developed land just north of the Avenue General Fouad Chehab provides an excellent opportunity to help re-planning a spatial strategy for Beirut's downtown. Design of the House is purposefully to attract local and international crowds from all directions to a new city centre. It will expand the urban life spin into the soul of the re-inventing Beirut.

The House's open space in a form of dynamic landscape organically connects into existing fragmented urban space. These notes of space will be matured at times. Their linkup through pleasant strolls profoundly strengthens a welcoming touch of the House at the city centre far beyond its physical building boundary. People can start to enjoy the building or can still recall its splendour long before or after the visit.

Form

A continuity intertwines form start from the observation of our muscle texture. reveal the tensions between different area . could reinforce the structure and interlink different section smoothly. super-impose into the art of house which programmatically includes a few different parts. it looks have remarkable points we can address. moreover this continuity intertwines form will stand out from the neighbour for the landmark purpose but also with its extremely agreeable planning and disposition, the House design will be warmly received to form an integral part of the capital. The form design bases on responding to constraints and opportunities.

Constraints 1

8m level difference between the site's northern and southern edges

Response 1

Multi-entrances connected by the grand staircase

Constraints 2

Eastern and western solar impact

Response 2

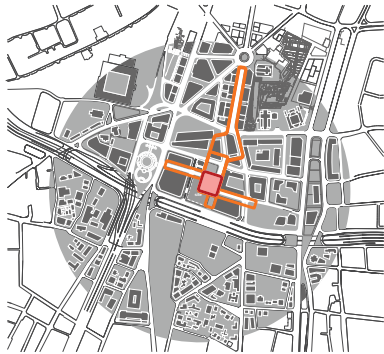
Sizes and directions of fenestrations echoing the desirable and undesirable lights

Constraint 3

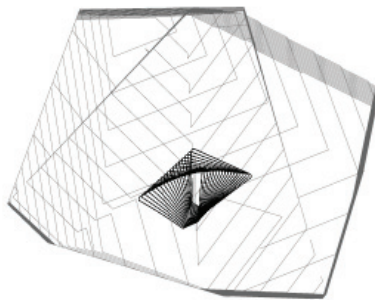
Future high-rise developments in the immediate surrounding

Response 3

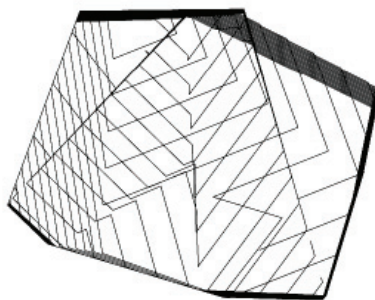
An alternative but carefully calculated form to harmonize and co-operate



THE CULTURAL SQUARE



void = asymptote movement



mass = continuity intertwin



muscle texture of human body

Constraint 4

Traffic noise by Avenue General Fouad Chehab

Response 4

Controlled fenestrations and internal spatial planning with less noise affected uses along the south façade
Urban Design

Opportunity 1

Site at the end of the city spin

Response 1

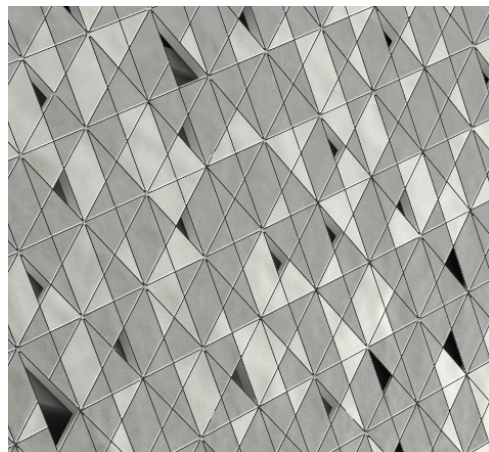
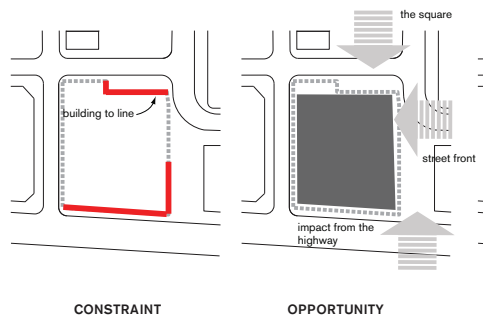
A strong form to iconize the end

Opportunity 2

Busy Avenue General Fouad Chehab providing a wide and popular exposing frontage

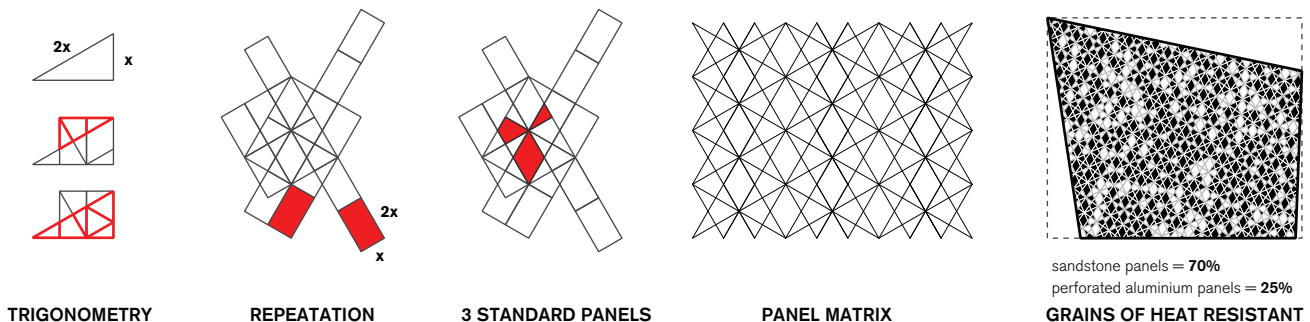
Response 2

Dramatic facades to impress and reward visitors and road-users



Façade

The changes in the re-inventing process of Beirut are transformed to a dynamic mass and exciting multi-faceted facades. The facades consist of 3 different types of modular panels. They come in 3 kinds of proportions of 2 materials, white sandstone and white aluminum. The use of former follows the tradition of glorifying stone as a formal and enduring façade construction material. In the representation of the re-inventing capital, aluminum is introduced to be a newly evolved addition to façade construction. The materially merging panels emphasize the House's significant role in bridging the East and West, and connecting the ancient and the modern. Architecturally these panels are united in general but changes in color, brightness, reflection and therefore characters are poetically expressed at different time of the day and season.



Architectural Layout

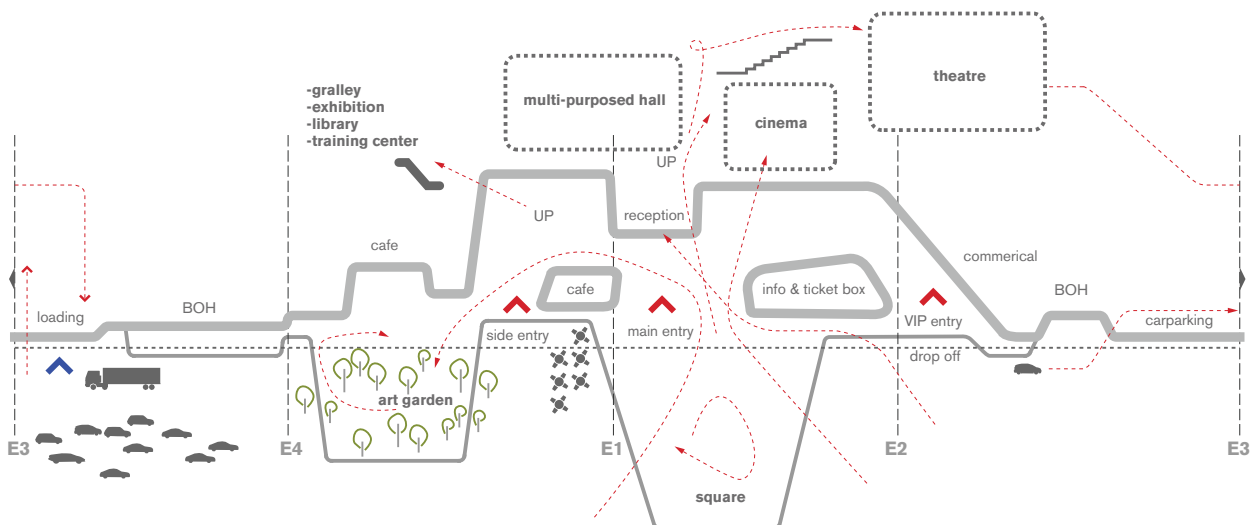
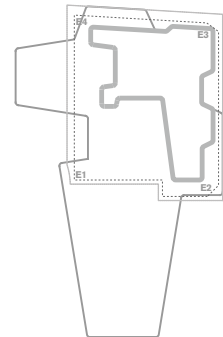
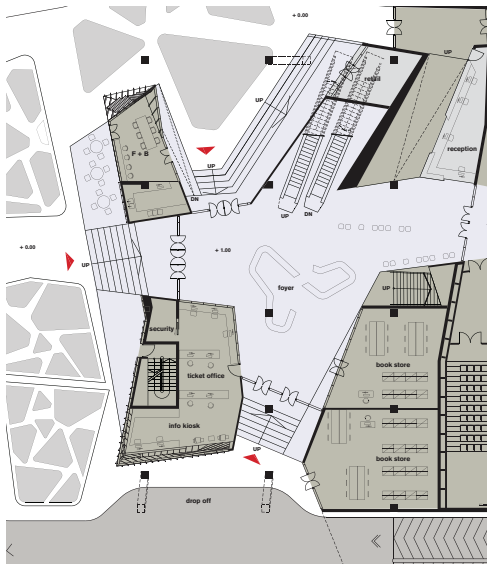
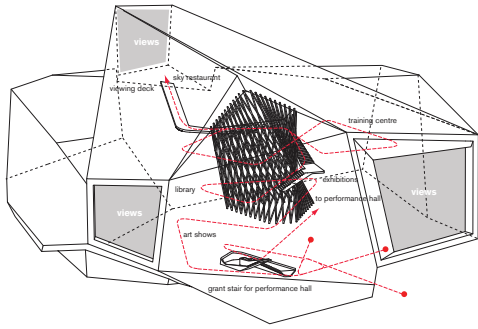
A journey in experiencing cultures, full of happenings, is proposed inside the House by means of a freely spiral circulation from Level 1 to level 6. People lingering around the central tubular void will be able to be excited by the events inside and the views outside.

Multi-cultural Quality

An interpretation of the city's multi-cultural environment is an integral component of the design. Ideas inspired from different cultures must be embedded in various architectural terms. These ideas include geometry, use of color, space and customs.

Practicality

A good balance must be achieved between openness and the need of security. Discreet checkpoints and other high-tech security facilities are proposed at strategic locations to control in and out human and vehicular traffic. Visitors will find the security measures performed deliberately.



Summary of Surface Areas

Spaces	AREAS PROGRAMME	AREAS PROJECT
A. Reception, Information	435	466
B. Performance and Conference hall	2,434	2781.5
C. Exhibition Spaces	1,170	1854
D. Work and Training rooms	670	783
E. Documentation Centre	640	762
F. Cinematheque	273	336
G. Cafeteria and commercial spaces	510	675
H. Administration	451	486
I. Miscellaneous Spaces	305	355
J. Technical rooms	500	700
K. Parking and delivery	7,800	9060
TOTAL USEFUL SURFACE	15,188	18258.5
Horizontal and vertical circulation	700	3043

FUNCTION	USEFUL AREA PROGRAMME M2	USEFUL AREA PROJECT M2
A. RECEPTION & INFORMATION	435	466
A1 . Reception Hall	300	329
A2. Ticket offices	50	50
A3. Information desk	25	27
A4. Security room	20	20
A5. Public restrooms	40	40
B. PERFORMANCE & CONFERENCE HALL	2,434	2781.5
B1. Hall	300	350
B2. Butlery	15	20
B3. Public restrooms	40	40
B4. Large Performance and Conference Hall		
Hall 800 Places	1,000	1158
Lighting control room	15	35
Sound control room	15	28
Room for film projection	15	36
Recording room	10	24
Interpretation booths	4 X 5 m2 = 20	20
B5. Small Multimedia Performance Hall		
Hall 250 places	300	321.5
Lighting control room	10	10
Sound control room	10	10
Room for film projection	10	10
Recording room	10	10

B6. Adjoining Rooms Common To Both Performance Halls		
Individual dressing rooms	2 X 15 m2 = 30	32
Individual dressing rooms	6 X 10 m2 = 60	65
Double dressing rooms	6 X 10 m2 = 60	60
Collective dressing rooms for men	40	42
Collective dressing rooms for women	40	43
Restrooms and showers for the collective dressing rooms	2 X 25 m2 = 50	50
Foyer for the artists	30	36
B7. Meeting Rooms		
Big meeting room 50 persons	60	60
Projection room	10	10
Interpretation booths	4 X 3 m2 = 12	12
Small meeting room 30 persons	40	45
Projection room	10	10
Interpretation booths	4 X 3 m2 = 12	12
B8. Movie Theater		
Room 200 persons	200	207
Projection room	10	25
C. EXHIBITION SPACES	1,170	1854
C1. Lounge	100	340
C2. Exhibition Room	1,000	1444
C3. Workshop	50	50
C4. Staff Restrooms	10	10
C5. Butlery	10	10
D. WORKSHOPS & TRAINING ROOMS	670	783
D1. Workshops		
Sound studios	3 X 20 m2 = 60	60
Cinema/video/editing	3 X 20 m2 = 60	65
Photo Laboratories	2 X 10 m2 = 20	30
Computer rooms	2 X 30 m2 = 60	60
Printing room	30	30
Theatre and music Workshop	3 X 50 m2 = 150	195
Dance workshop	50	58
Arts workshop	2 X 50 m2 = 100	115
Classrooms	3 X 30 m2 = 90	90
D2. Restrooms & Showers	50	80
E. DOCUMENTATION CENTRE	640	762
E1. Library		
Reception desk	14	15
Reading room	60	100
Shelves	300	305
Storage for books in-stock	50	52
E2. Audiovisual Service		
Reception desk	13	13
Listening and viewing stations (15)	45	85
Storage	20	30
E3. Study Rooms	6 X 8 m2 = 48	50
E4. Offices	3 X 12 m2 = 36	36
E5. Workshops	30	30
E6. Restrooms	24	46
F. NATIONAL CINEMATHEQUE	273	336
F1. Administrative Offices		
Curator	16	17
Manager of technical services	12	12

Manager of distribution	12	12
Secretariat	12	12
Staff Offices	2 X 12 m2 = 24	25
Restrooms	12	12
F2. Storage Rooms		
Conservation of printing elements	50	50
Conservation of positive copies	60	60
Projection Copies	20	33
Reception and sorting space	20	55
Workshop for copies control	20	30
Cleaning the copies	15	18
G. CAFETERIA & COMMERCIAL SPACES	510	675
G1. Cafeteria		
Restaurant 125 places	200	350
Kitchen and related areas	100	100
Public restrooms	30	30
G2. Shops & Boutiques		
Bookshop, CDs and DVDs sale, posters, souvenirs	150	165
Boutiques stock	30	30
H. ADMINISTRATION	451	486
H1. Director Office	30	32
H2. General Secretary Office	24	24
H3. Waiting Room	15	15
H4. Meeting Rooms	40	45
H5. Private Restrooms	8	8
H6. Administrator Office	24	40
H7. Offices for Programme Planning Managers	6 X 12 m2 = 72	80
H8. Offices for Managers Responsible for Leasing the Spaces	2 X 16 m2 = 32	32
H9. Offices for Trainees	4 X 12 m2 = 48	48
H10. Administrative Offices	4 X 16 m2 = 64	64
H11. Secretariat Pool	12	12
H12. Meeting Room	24	26
H13. Kitchennete	8	10
H14. Staff Restrooms	15	15
H15. Area for Reprography	15	15
H16. Archives	20	20
I. MISCELLANEOUS SPACES	305	355
I1. STOREROOM	60	60
I2. WORKSHOP	50	50
I3. STORAGE	60	60
I4. ARCHIVES	60	60
I5. WASTE STORAGE	20	40
I6. STAFF ROOM	20	35
I7. LOCKERS & RESTROOMS FOR STAFF	20	25
I8. INFIRMARY	10	20
I9. INFIRMARY'S RESTROOMS	5	5
J. TECHNICAL ROOMS	500	700
J1. TECHNICAL MISCELLANEOUS AREAS	500	700
K. PARKING AND DELIVERY	7,800	9060
K1. UNDERGROUND PARKING 278 CARS	7,500	8,750
K2. DELIVERY AREA	300	310