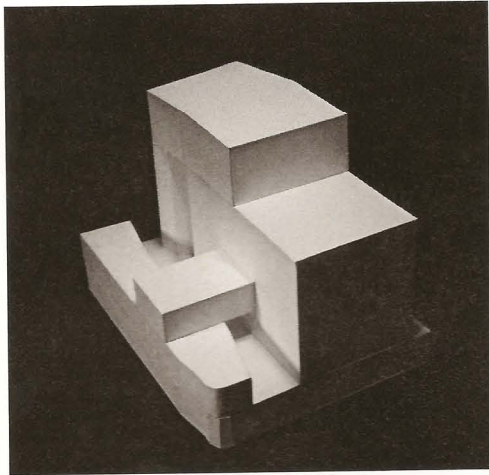


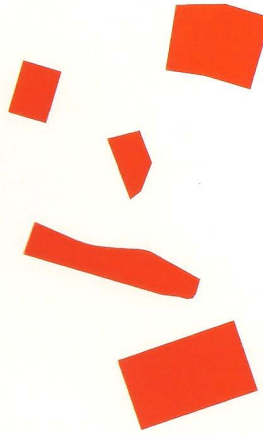
**House of Arts and Culture in Beirut, Lebanon**

The proposal for the new House of Arts and Culture in Beirut Lebanon is a dynamic, urban house that offers a variety of spaces. The house stands as a white sculpture on the lot.

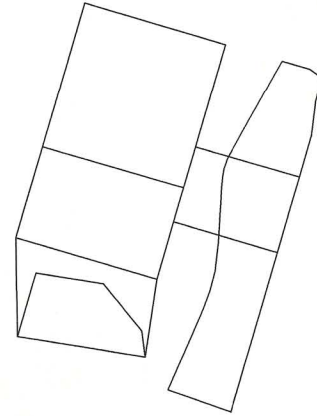
The house consists of 5 connected shapes, creating a whole. A long narrow building with a curved glass facade, with a small box on top connected to the big performance hall box and a tower sustaining the "top box" with the big performance hall box.



The house



The 5 shapes



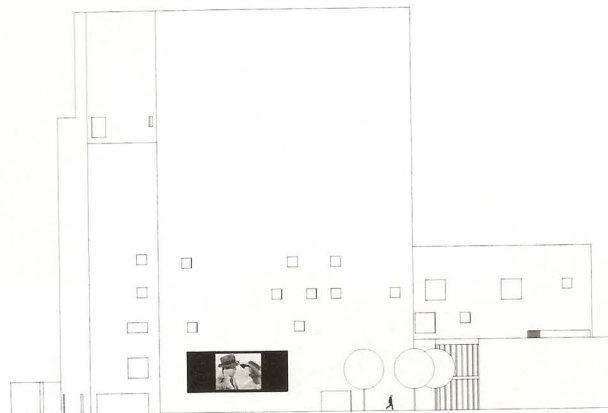
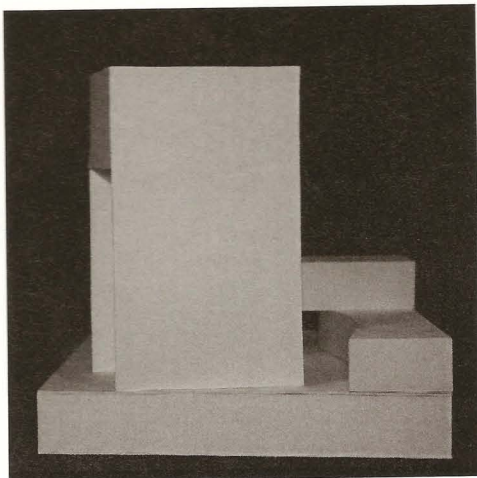
The 5 shapes together

**The ground floor**

The ground floor is the first contact with the house, except from the underground parking. The arrival to the ground floor can be from the Avenue du General Fouad Chehab and the lower street level facing North is connected to the ground floor by a staircase. The parking is connected to the ground floor as well by staircases and elevators.

Three of the shapes are placed around an open space with trees and benches. An inviting long curved glass facade is where the reception hall, ticket office and restaurant are. In front is the "Tower" and "Big Performance Hall Box". The bookstore is situated in the "Tower", a glass facade connects the bookstore with the Avenue. The lounge with the bar and movie theater are both situated in the "Big Performance Hall Box". The delivery area is also situated "Big Performance Hall Box", facing the Avenue. Behind the delivery area are the storage and staff rooms.

The ground floor is the floor that receives the artist, visitor and worker. It is a dynamic space of transition.



Facade facing Avenue, arrival to ground floor

257

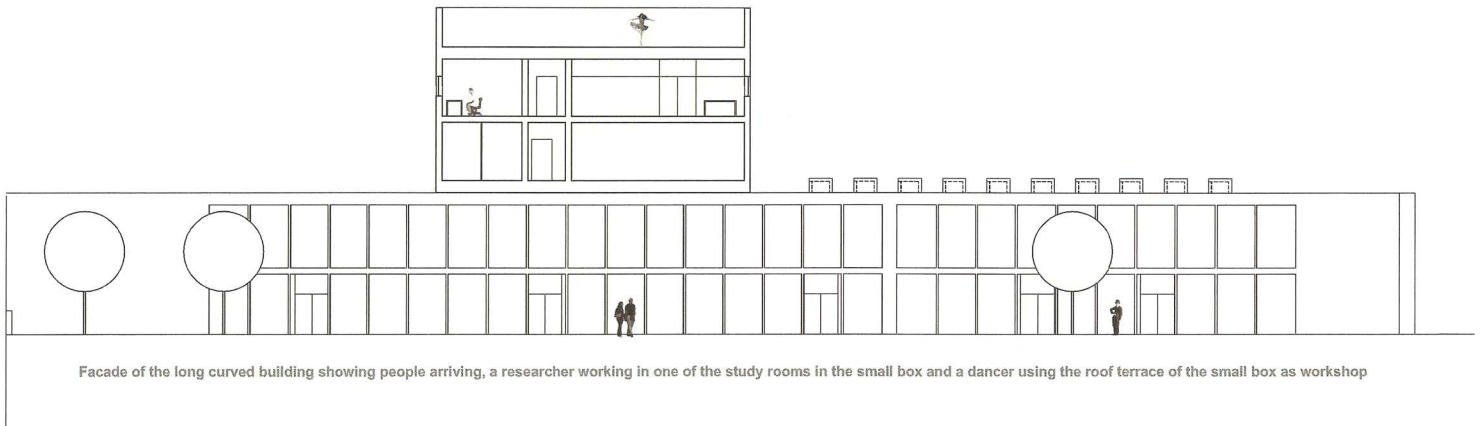
D 6963 HDU

## The first floor

From the reception hall the visitor or researcher can take the staircase or elevator up to the 1. floor where the library is situated. Again a long curved glass facade with a view onto the open space with the trees and the people coming and going.

From the lounge in the big performance hall box is a spiral staircase and two elevator that goes up to a small lounge area and also connects to the foyer for the artists, the cinema workshop and cinemateque. The cinemateque is also connected to the projection room of the cinema. The 1 floor is where artists meet with young filmmakers, and young filmmakers meet the staff from the cinemateque. Between the cinema workshop and the cinemateque is situated a small classroom for projection of films.

The first floor of the tower houses the second floor of the bookstore and the security room.



## The second floor

The first floor of the curved building communicates up to the small box where offices, study rooms, workshops and meeting rooms are situated.

The second floor in the big performance hall box is where the access to the big performance hall is situated. Coming from the 1. floor via the spiral staircase a high open space meets the visitor.

The big performance hall is a rough space with a stage and seats that can be removed if necessary. Heavy curtains are used as separation between stage area and stage. A small room adjacent to the stage communicates to upper levels by elevator.

The workshop for sets is also situated on the second floor by a lift and a staircase. Connected to the delivery area on the groundfloor. The staircase continues up to the changing rooms of the artists.

The 2. Floor of the tower is the last floor oriented towards the public, the rest of the tower houses the administration and some of the workshop.

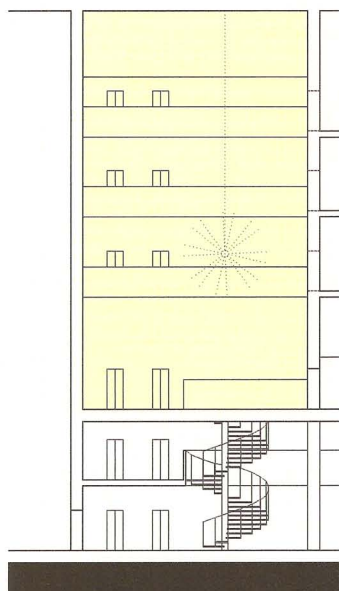


Diagram of section showing arrival to the big performance hall via spiral staircase and elevators



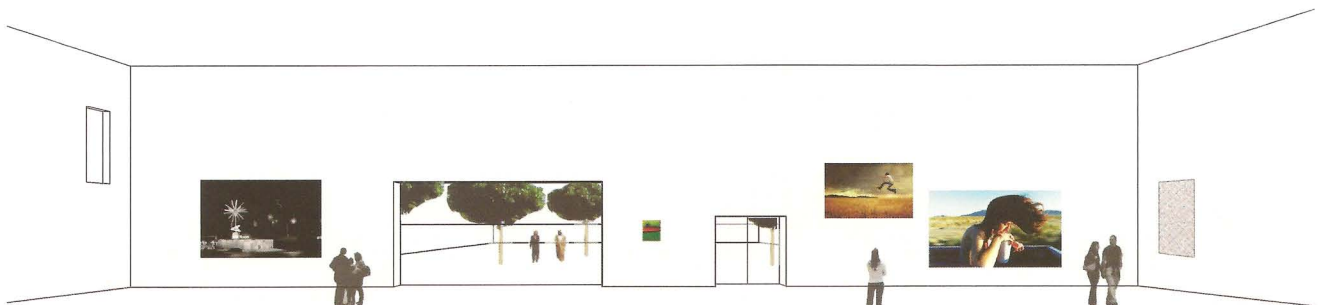
Perspective from dance workshop

### The Top Box

The top box is the box situated on top of the tower and the big performance hall box. Here is situated the 8 and 9 floor. The 8 floor only houses the exhibition halls and the lounge connected to the exhibition. The exhibition hall opens up onto a roof garden. It is the secret garden of the house that can only be reached through the exhibition hall.

The ninth floor is the last floor of the house. Here, the second floor of the double high exhibition space is situated and a smaller, narrow exhibition space that could be used for photo exhibitions, etchings and drawings exhibition.

But the 9 floor also houses the second performance hall. Connected via elevators in the lounge of the groundfloor. The three theater workshops are adjacent to the second performance hall.



Perspective of exhibition hall with view onto roof terrace

Lighting

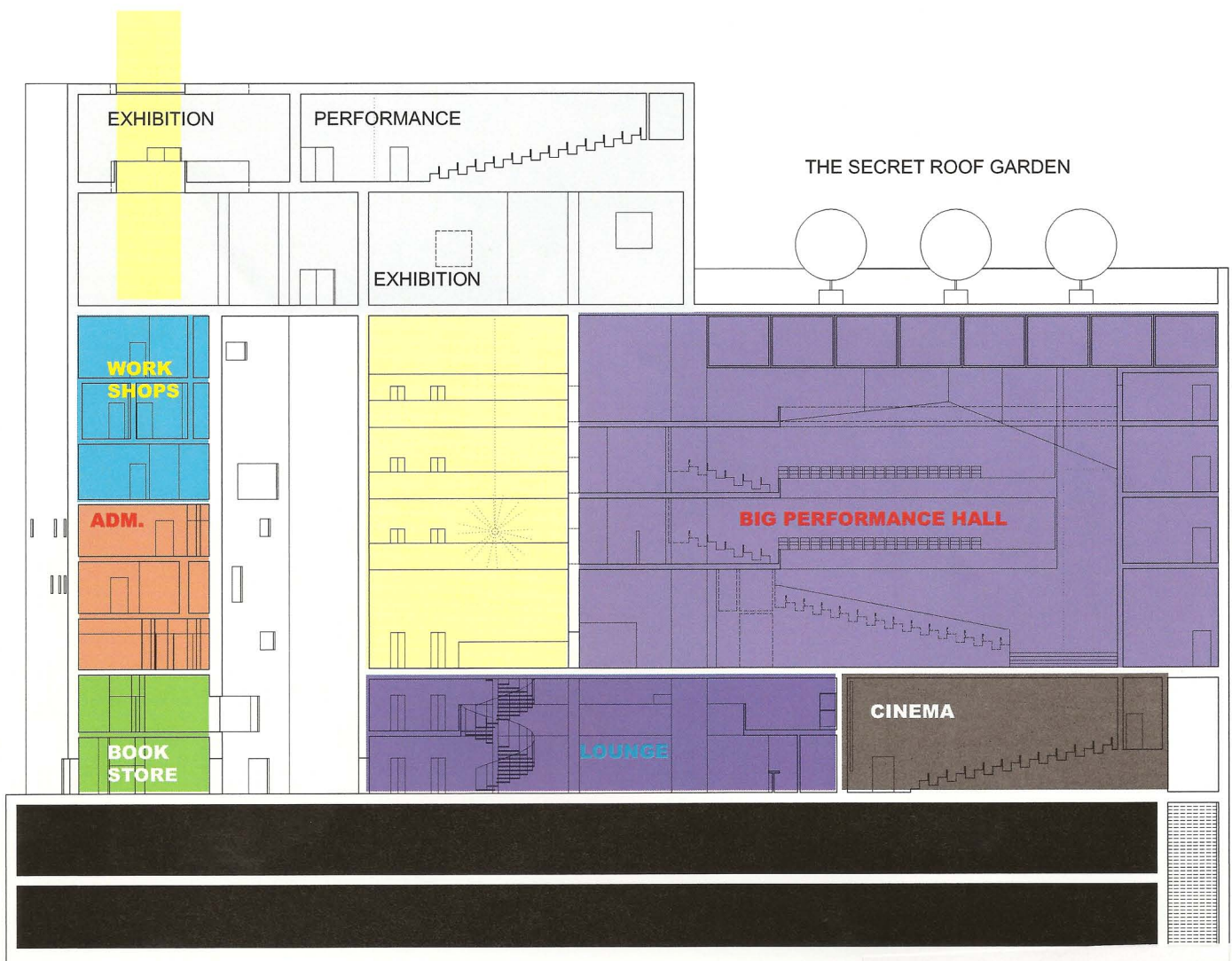
The house is organised so all spaces have natural lighting, except for the spaces where it is not necessary or required.

Material

The house could be a rough concrete building but if possible it would have a skin of tiles made from the lebanese sandstone. The doors are mostly glass doors throughout the house and some of the panels made of cedar tree, mainly on the ground floor. Some flooring would be concrete, some cedar tree decks.

Ideally it is a house of 3 visible materials : the lebanese sandstone, the ( lebanese ) cedartree and glass.

Though elements as the spiral staircase are imagined as rougher with a more industrial look.



D 6963 HDU