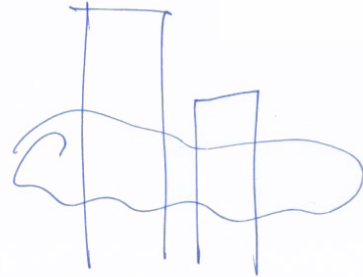


## Beirut Arts and Culture Centre

### The spatial concept

A large **horizontal volume suspended by towers** serves as the primary visual marker and structuring principle of the urban mise en scène of the Arts and Culture Centre. Forming the heart of the sequence of social spaces of the Centre, this cloud-like volume represents a Salle des pas perdus reinterpreted as a participatory space of creative spectacle. Its protruding facade acts as vast screen, visible from afar, advertising the centre's role as a harbour of creativity in the city. The **porous mesh** of the façade wrapping around the stark volumes of the towers evoke the centre's open dialogue with the creative life of the city. The vertical arrangement of the Centre opens the **space to stage a spill over of public life** from the street into the Salle and onto the roof.



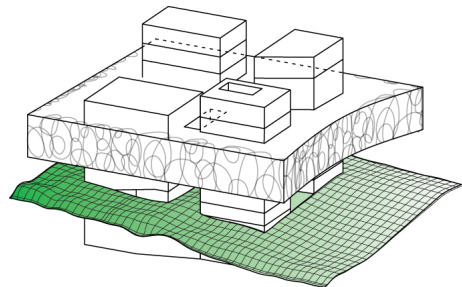
A horizontal volume suspended by towers



Space to stage public life

### Elevated plaza

The main body of the Centre is lifted from the ground to create an elevated public plaza surrounded by gardens. The main entrance is oriented north to link the Centre with the network of public spaces in the downtown area. The urban entry is articulated by a terraced garden and recessed order of steps, inviting a strong sense of movement inside and through the Centre.



Elevated Plaza

000700

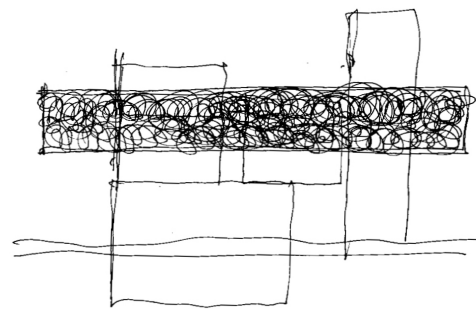
The plaza, furnished with a café and cinema lounge, is designed as an inclusive public space simultaneously offering shade and directed views across the gardens to the surrounding area. **The undercroft of the Salle, clad in mirrors**, evokes a sense of play and participation, which anticipates and invites into the performance spaces of the Salle accessed through the base of the 'Art Tower'. It is proposed that a single ticket may be purchased here affording access to the social places and myriad creative activities taking place in the upper levels of the Centre.



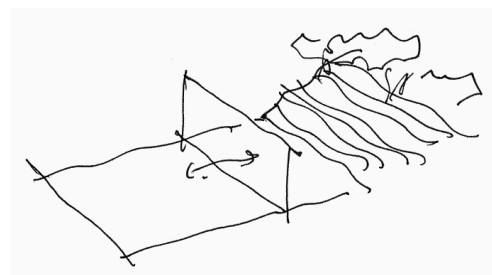
The undercroft of the Salle, clad in mirrors

### The 'Cloud' / The Salle des pas perdus

The Salle des pas perdus is conceived as a large polyvalent space offering flexible opportunities for varied social interactions, exhibitions and performances. Open to all sides it offers a panoramic promenade not only of the Centre's activities but also of the transforming spectacle of Beirut's revival in the city centre and the southern neighbourhoods beyond the freeway. The fully adjustable walls, stage and seating of **the black box can be transformed** into multiple configurations and threshold spaces reaching into surrounding spaces of the Salle. Ramps and staircases serve to create vistas into the unfolding of overlapping, open-ended creative activity. The sense of inherent creative possibility within the Salle is underlined by **play of light** transfigured



Porous mesh



the black box can be transformed

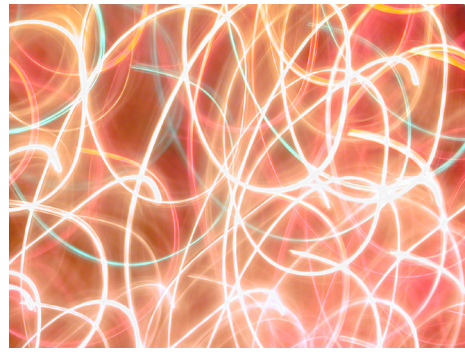
Black box / Foyer / Garden integrated to create one stage



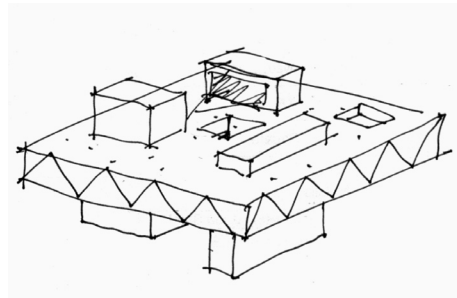
in the course of the day through the atmospheric mesh of the walls. At night, the dialogue between specific performances and events taking place in the Centre and the creative activities of the city as a whole culminates as the visitors (now visible from the outside) assume the role of protagonists of an ongoing public performance on **the urban stage**.

### Roof terrace

A gentle ascent to the roof terrace from the Salle is mediated by a hanging garden in between both levels, which also creates an outside visual link to the black box. **The surface of the roof is articulated through the towers** rising above, creating interlocking reference points to different activities going on inside them, as well as to the configuration of the levels below. The spaces linking the towers to the **panoramic platform** of the roof create further opportunities of informal and shifting social, leisure and performance activities determined by the visitors themselves.



Play of light



The surface of the roof is articulated through the towers



Panoramic platform

000700