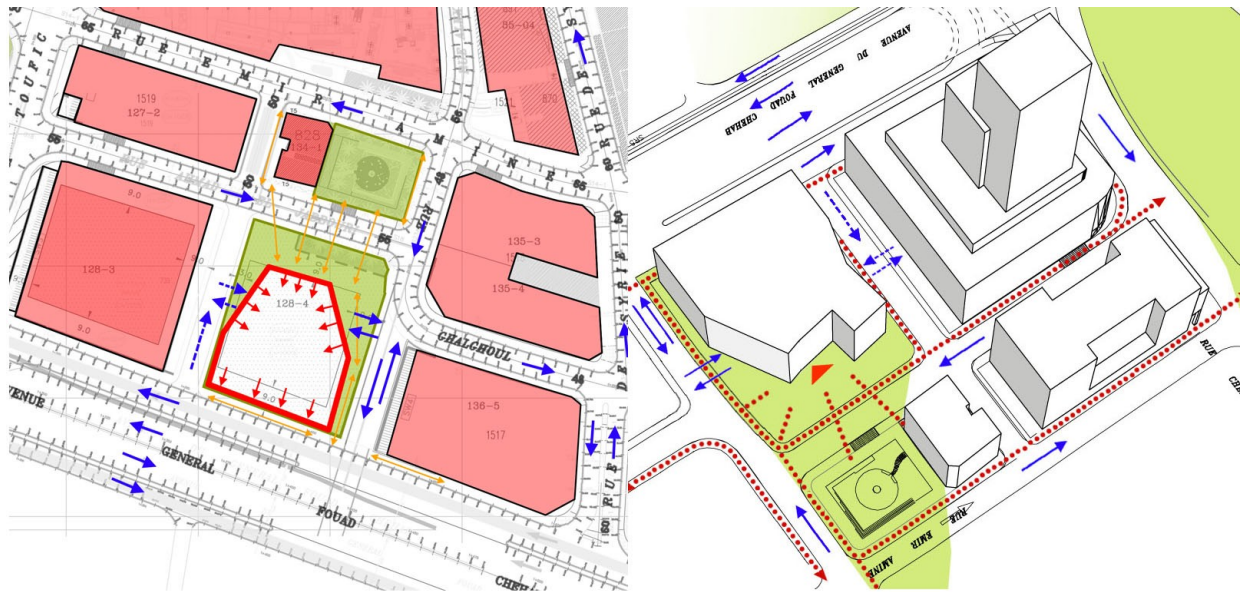


Introduction text.

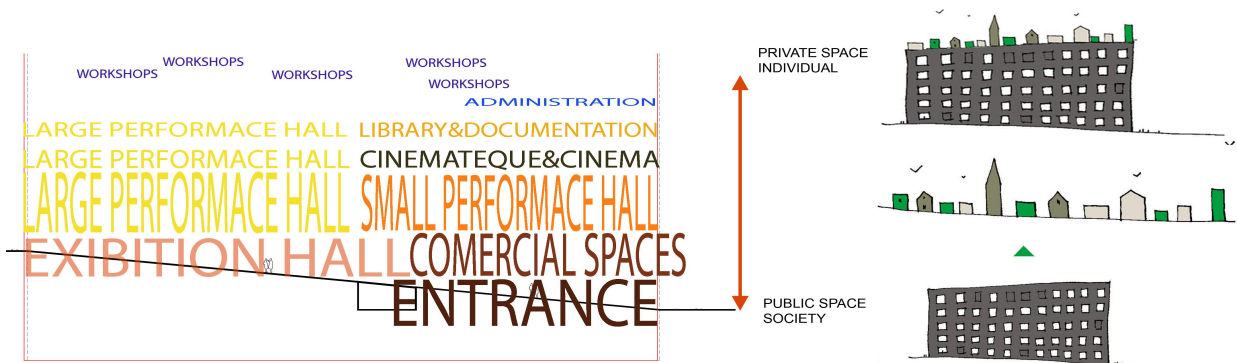
Existing and planned urban structure (scheme no.1) determines the exact location of the building and its main entrance in the plot.



Scheme1. Location of the building

The entrance is located on the North side, in front of the Bachri House where the most open part of the block is. A two-way street with a ramp leading to the underground parking is planned on the East side of the plot. On this side the building is stepped back from the street. A one-way street for service transport is planned on the West side of the plot. On this side as well the building is stepped back from the street to give access to employees and service. The large performance hall is located along Avenue General Fuad Chehab. The scale of it reflects the live traffic hub on Avenue General Fuad Chehab. Pedestrian ways inside the building follow the configuration of the plot. The volume of the building is reserved (closed) on the West and the East side because of the new high-rise development on neighboring plots.

The volume of the building follows analyzes of the given program by placing the public function in the lower levels and more close workshop rooms on the higher levels in the building. (scheme 3).



Scheme2. Analyze of the given program

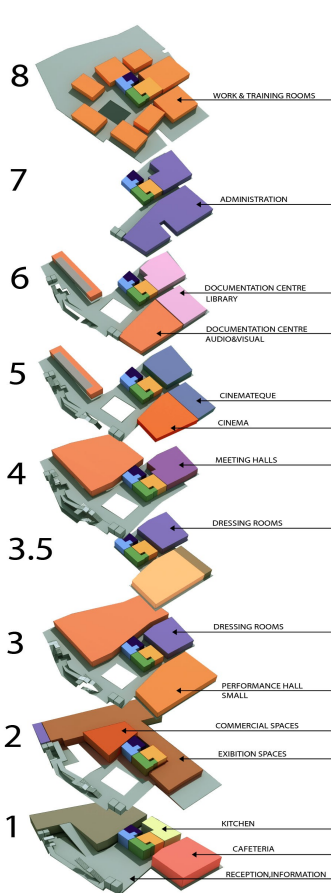
It gives semantical clearness of the buildings volume, which looks open at the street level and massive on the top. Functionally that helps to get more light in the public spaces and exhibition rooms and give more shade on the very insulated upper floors with workshop rooms. Connection

between different functions in one volume makes to think of the city life that never stops. The House of A&C is designed as an open metropolis on lower floors and as a small village on the upper floor where workshops are located. The image of the building follows the functional scheme. Public space is compared to a forest and private space is like a needle of a conifer in it. (scheme 3)



Scheme3. Visual image of the building

The building consists of eight overground and three underground floors. Vertical and horizontal communication are significant elements of the building. Therefore rooms are organized around internal atrium, to whom stairs and ramps connect. Technical core of the building is located close to the central part in order to organize technical rooms and service in the optimal solution.



Scheme5. Functional division of the spaces

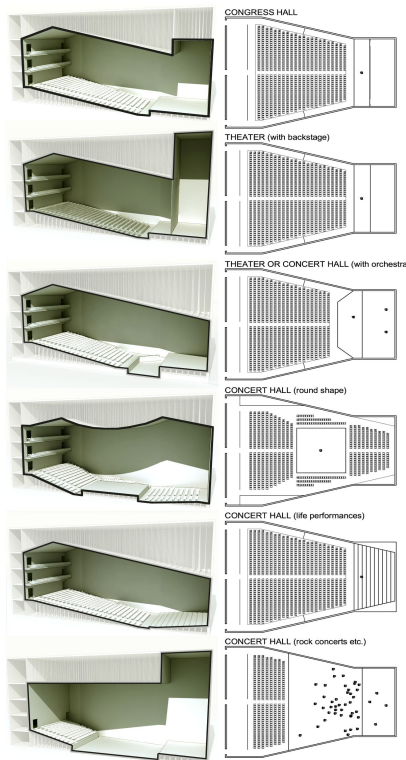
There is an entrance hall with an info office and a restaurant and access to the exhibition room and upper floors located on the first floor.

The second floor accommodates exhibition room in two levels and a shop. Artist rooms and entrances to the big and the small performance halls are located on the third floor. The flexibility of the large performance hall helps to access it from four levels if necessary. The hall is also accessible at Avenue General Fuad Chehab level.

The height of the big performance hall is 20 meters and it consists of 5 levels that accommodate a cinema, meeting rooms, a cinemateque, a library and administration rooms. Workshops are located on the upper floors of the building.

Workshops on the upper floor are designed as a cluster of separate volumes to give a creative sense for artists and to reflect the function of the building to neighboring high-rises.

Technical rooms are located in the slope of the plot at the entrance level. The delivery area is located on the first level and parking is occupies three underground levels.



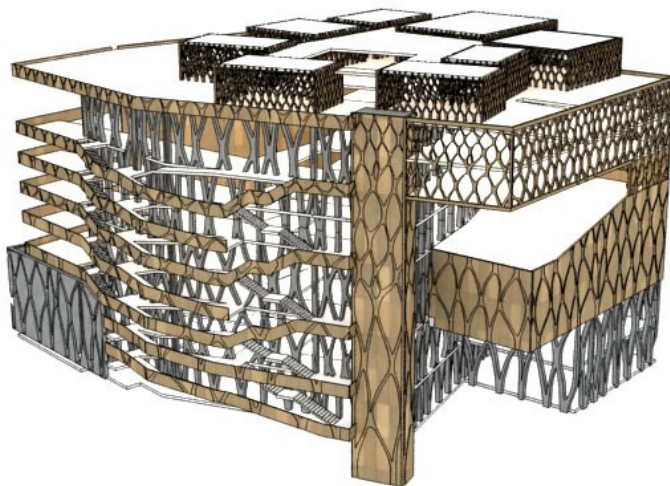
Scheme6. Transformable phases of the hall.

One of the main areas of the House is the large performance hall, which can adapt to different stage configurations. By means of acoustics and visibility qualities, the requests for universal hall are quite different and the hall is designed as transformable amount of planes, which can be adjusted to the needed requests (scheme 6). At this phase of the project there are no particular materials or profiles of the planes, but only the optimum geometry for the best acoustic quality are shown.

The small performance hall is designed as a Black Box with central area for the stage and area for the transformable seating platforms. If needed the hall can also be transformed to conference hall, cinema or theater with the stage at the one side.

The only not transformable sloping floor is at the cinema and it also shows at the exterior masses of the building.

The house is designed as reinforced concrete frame (scheme7) with the overhangs as metal frames.



Scheme7. Frame of the building.

Exposed concrete frames are designed as irregular modular triangles which are displayed in exterior. Upper floors are finished with composite material panels, which are made as open frames at the office areas. All levels are united by atrium, which is open at the level of the roof to serve as the air circulation area of the building. Interior is finished by the same materials as exterior-concrete at the first floors, panels at the upper levels.

