

THE HOUSE OF ARTS AND CULTURE, BEIRUT

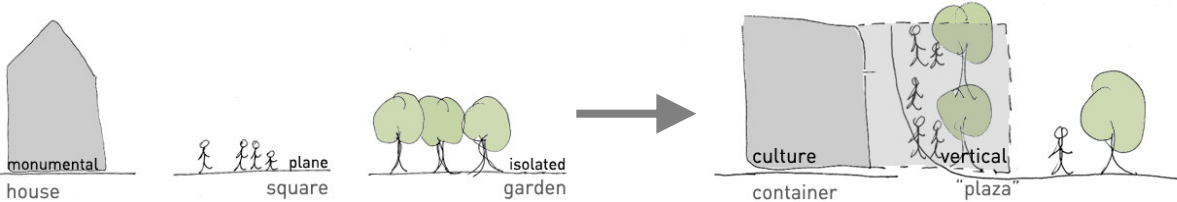
enterART

urban and architectural objectives of the project

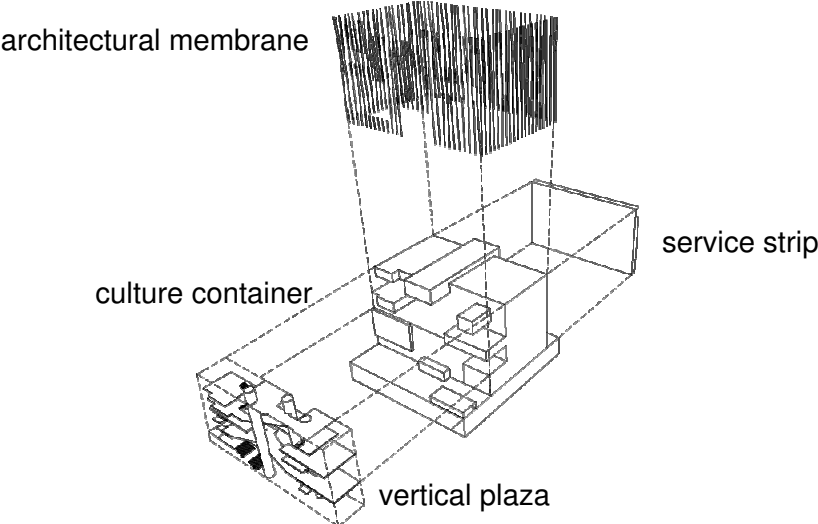
urban context

The site of the project is located in a full expansion district between the high speed road on the south of the lot and intermediary roads on three remaining sides. Bordered in the north by Ghalghoul Street and Riad el Solh Square, the centre is encircled by several large projects. Adjacent urban zone is characterized by a green alley in a Ghalghoul Street and public park of Riad el Solh Square.

architectural concept



Instead of building a monumental house of culture with classical urban scheme: *house-square-garden* horizontal stack, we opted for an architecture that embodies interaction between users, “culture container” and public spaces. Proposed scheme shapes the building as a container that is fulfilled with the art cells. Access to the facilities is achieved through the “vertical plaza” - an interactive vertically routed space created as an interface between the existing urbanistic tissue and new center of arts and culture. The “plaza” is formed of patios, elevators and stairs knitted in the structure of natural, social and urban elements: water, vegetation, bars, pleasure grounds, little squares etc.



functional and spatial organization

design and organization

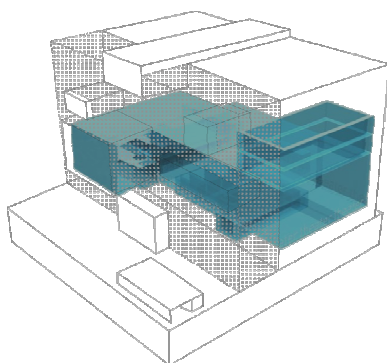
The house of arts and culture is based on the idea of forming a fluent vertical open space - "the plaza". The variety of architectural program contained by the building is accessed through its paths, stairs and elevators. Transparent metal membrane that encloses the whole building enables a dialogue with surrounding neighborhood, emphasizing it with glass screens that break through on the north façade making obvious the position of main functions inside the building.

House of arts and culture has ten levels, three underground and seven above. Underground space contains a garage with 278 parking places, technical room and communication, accessible through ramps, stairs and elevators.

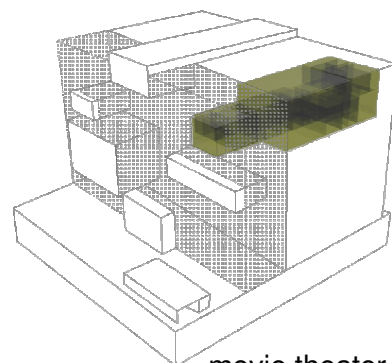
Main entrance is on the ground floor, together with reception hall and information desk. Service entrance on the east side of the building gives access to suppliers to delivery area, and leads staff to the south side service and communication strip that runs all the way up to the 6th floor.

"The vertical plaza" on the north part of the building contains almost all public communication.

Performance and conference hall area extends from ground floor, where artists enter their dressing rooms, through 1st and 2nd floor with large performance hall, small multimedia hall and their admittance area (foyer, hall), to 3rd and 4th floor with gallery that overlooks the theatre, and two meeting rooms enabled for projection and interpretation.



theater

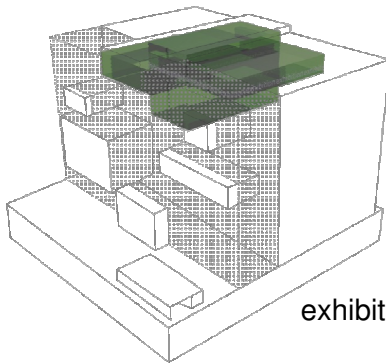


movie theater

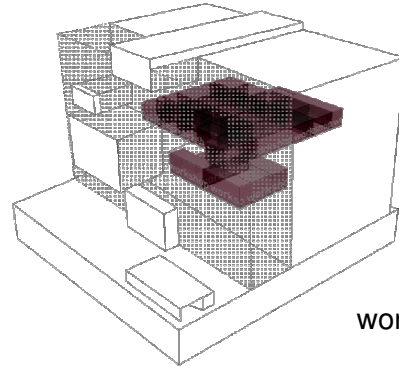
Movie theater is placed between 5th and 6th floor. National cinematheque offices and storage rooms are adjacent to the movie theater.

Exhibition space access is made through the foyer on top floor, and exhibition circles around an open three storey high gallery down to 4th floor.

Workshops and training rooms occupy most of 3rd floor, while the rest belongs to documentation center’s study room and shelves space, connected internally with library and audiovisual room upstairs.



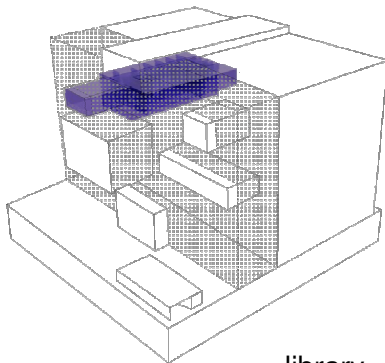
exhibition space



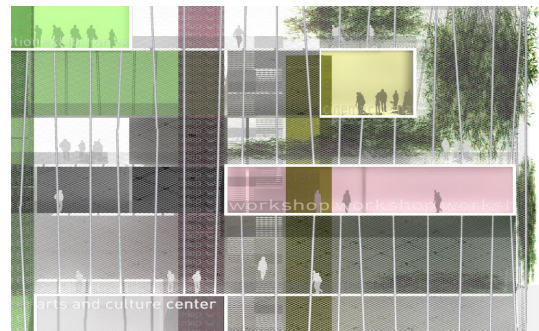
workshop

Restaurant on the 5th floor is formed as an open space and watches over the exhibition. Bookshop and media shop are placed in two separate spaces, in direct relation to “the plaza”, on 1st and ground floor.

Administration’s offices “dominate” the building from the top level, and miscellaneous spaces like storage, staff room, waste storage, infirmary, are mainly concentrated on the ground floor.



library



“vertical plaza” detail

construction concept and materials

Building construction concept is based on perimeter reinforced concrete walls and regular orthogonal grid made of either reinforced concrete walls, as well as steel structure frames (above theater). Vertical plaza is made of steel structure columns and beams. Roof is covered by green, accessible layer above the administration, and with hydro insulation membrane with photovoltaic cells above the movie theater.

Perimeter of the building is covered with the prefabricated façade panels (concrete or similar) and finally “wrapped” in a metal mesh membrane, supported with thin steel structure, that provides shading and ventilated layer for the building.

technical and building solutions

The result of an architectural concept is the building perfectly adapted to its surroundings, taking advantage of a local climate. Approaches for the energy concept in the building are controlled wall and glass elements conductivities, solar protection (shading) with the membrane, natural ventilation in the direction north-south, the creation of the chimney effect in the service strip on the southern façade and vegetation with microclimate zone in the “vertical plaza”. The global structure of the complex fosters the integration of thermal solar boiler and photovoltaic energy.

In the winter period strategy is based on suitable insulation, high inertia (allows using low heating temperatures), minimum fresh take intake with passive preheated air (ground as a center for thermal interchange).

In the summer period the strategy is based on green roof, high thermal inertia on facades, solar protection through the membrane, natural ventilation, ground system used to pre-cool the air entering the building.

