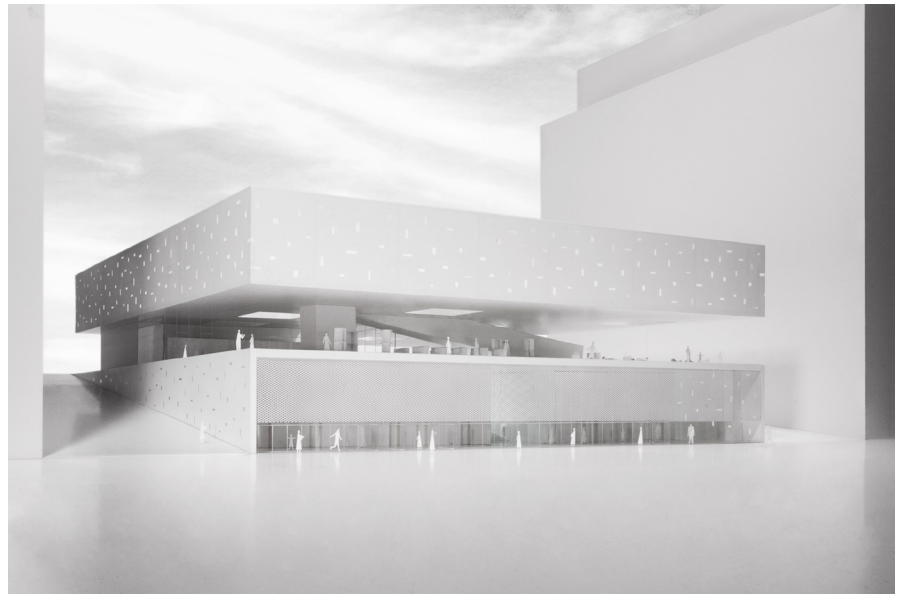
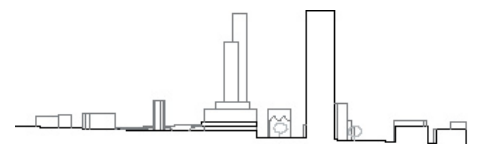
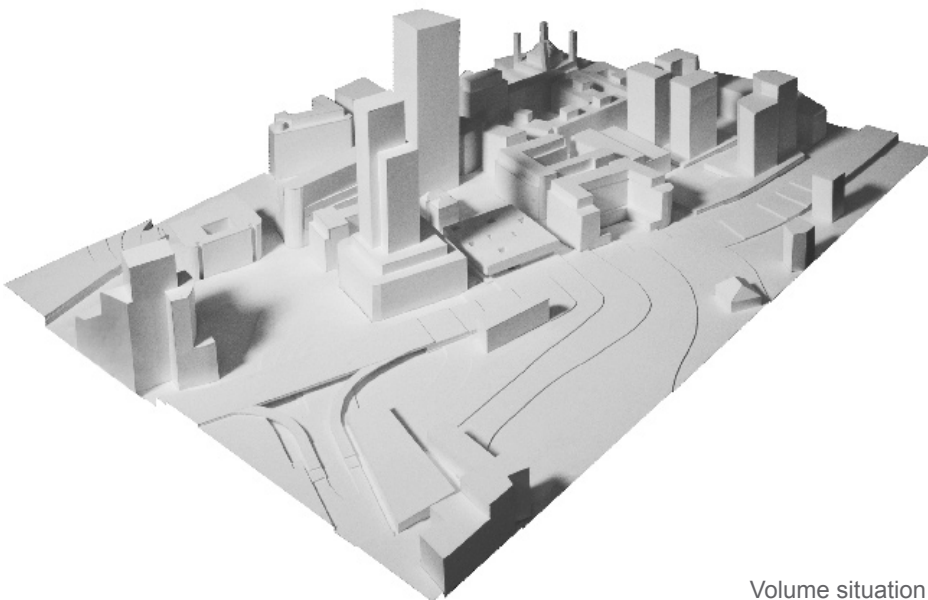


The House of Arts and Culture, The Lebanese-Omani Centre

Guiding Principles. The new cultural centre constitutes a platform for the Lebanese population and its art scene. Its aim is to not only cater for exhibitions and performances, but to simultaneously serve as a point of encounter, for exchange between artists and their public, for creative work, research and for archiving. The cultural centre serves freethinking and its creative implementation, and creates an ideal framework within which to realise these ideals.



Idea. The new building structure is horizontally layered and connects the two topographical elevations with each other. The low level of the building contrasts strikingly and symbolically with the existing and planned buildings and high-rise blocks of the immediate surroundings. By this means the perceptively low building becomes distinctively evident without having to avail itself of a conspicuous monumentality.



Volume situation

Section situation

The rectangular plan of the building consists of a base, incorporating the sharp shift in topographical height, and above it a “floating” roof. In between is the open exterior space, a platform over the city that defines the spatial focus of the new cultural centre.

Platform. The attractive exterior space is situated at the intersection between the functions and the routes. The restaurant and the cafeteria are arranged here. The publicly orientated functions

create an exceptional urban meeting-point. The covered terrace-space emphasises the public character of the building and encourages interaction between the various visitors. It simultaneously serves as a theatre foyer, exhibition space, stage, interval space, public urban square, viewing promenade and street café.

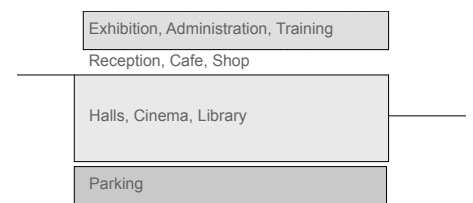


Platform

Architecture. The building consists of three elementary parts – base, terrace and roof. The base accommodates the slope of the terrain and connects seamlessly with the upper street level. The point bearings of the roof mean that it appears to hover above the building. Various inner courtyards light the building from inside. Both volumes define the promenade deck, which in turn coalesces all of the functions of the cultural centre and the urban setting with each other.

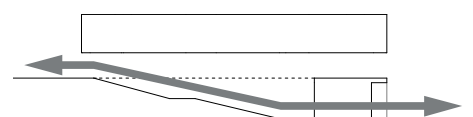
Construction, Materialisation. The building is executed in light reinforced concrete. The concrete surfaces (floors, walls, and visible under-sides) are cut and polished. The movable terrace shutters are made of fine metal grille and synthetic fabric. Depending on the occasion, time of year or incidence of sunlight, they can be used either open or closed.

Organisation. The organisation corresponds to the architectural division – the theatre facilities, the foyer and the library are located in the base; the exhibition and workshop rooms in the roof, along with the offices; the restaurant and a bar are situated in the terrace area. This spacious, covered exterior space provides the cultural centre with a summer foyer and a space for open-air events, exhibitions and parties.



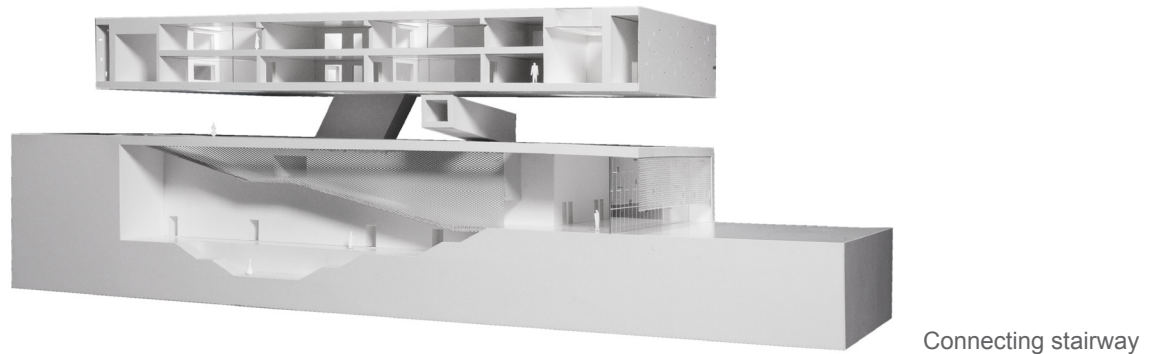
Organisation

Access. The cultural centre can be accessed from two different levels of the city. A broad exterior stairway connects both levels, meaning that the foyer can be likewise accessed from two sides. Continuous lift installations connect every level with each other.

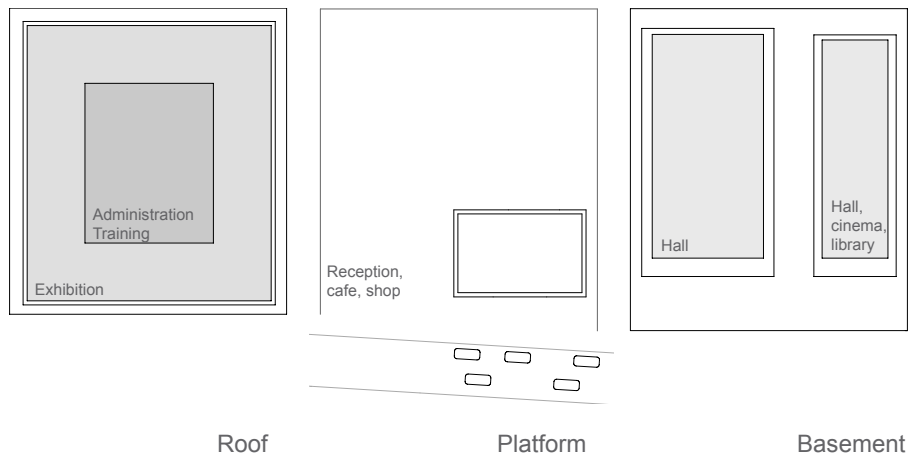


Urban connection

Along with the ground-level entrance, the main and auxiliary halls are accessed at two levels via the central stairway and a side flight of stairs. The cinema is reached via the staircase of the auxiliary hall. The museum is connected by the large ramp at platform level and by lift.



Sound Insulation. The performance halls and the exhibition spaces are orientated inwards, and are sealed off externally by access layers. The platform functions are orientated towards the city, where the position of the stage tower insulates against the sound of the traffic.



Air-Conditioning. The mild Mediterranean climate allows a fluid transition from the interior to exterior space. The entire length foyer can be opened out towards the city.

The foyer space can be use all year round. During the day it lies in the shade and is ventilated and cooled via the movable grille structure. When the shutters are opened up the exterior space opens out towards the city and the cool breeze from the sea. The restaurant and the bar can be separated in terms of air-conditioning. Large sliding doors connect the closed and the open restaurant space with each other.

The courtyard-like openings in the roof structure serve both as lightining and as night-time cooling. The same applies to the continuous access space, which acts as an air-conditioning buffer for the internally located exhibition spaces.

Deliveries, Infrastructure. Deliveries take place via the platform and a large goods lift. The lift accesses both of the halls and the museum. A second goods lift is available for smaller transports.

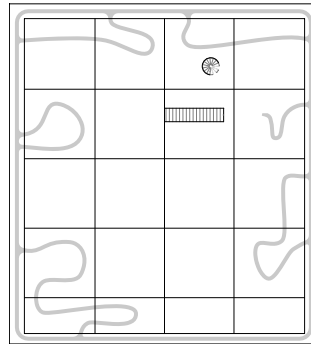
The performers' entrance is annexed to the delivery core. An additional entrance is available via the large ramp at the library level.

Emergency escape exits are located at the ground floor and an escape route over the emergency staircases via the platform.

Parking. The three parking levels are accessed via an externally positioned ramp, located on the street area to the west of the building.



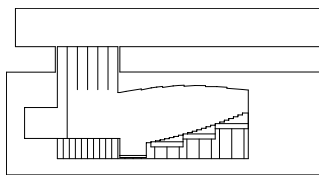
Circulation space



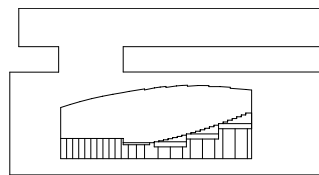
Circulation museum

Museum. The exhibition spaces are arranged as a gallery in the loft storey of the building. The individual rooms differ in size and are lit by means of natural sidelight or roof-lights. The flexibility of the routes and natural lighting (blackbox) is guaranteed.

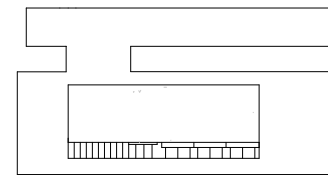
Main Hall. The main hall is designed as a classical, European theatre-hall and meets high standards in terms of acoustics, viewing, seating and stage installations. The hall is constructed on lifting stage-machinery and can be transformed accordingly. By this means the hall can also serve as a level multipurpose space.



Grand théâtre



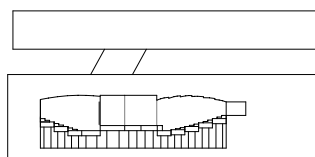
Concert hall



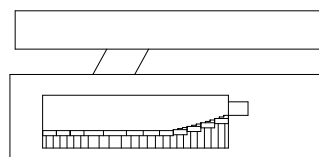
Multifunctional hall

Flexibility big hall

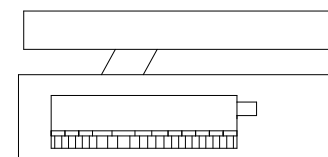
Auxiliary Hall, Cinema. The auxiliary hall likewise meets high standards in acoustics, quality seating and transformability. All of the elements of the room enclosings are adaptable. The hall can be connected together with the cinema. The roof and floor elements of the lifting stage can be individually adjusted, providing all the prerequisites for varying and experimental uses.



Cinema and theater



Experimental theater



Multifunctional hall

Flexibility small hall

Workshops, Studios, Studies. The premises for the working areas are arranged in the loft in the immediate vicinity of the museum. The rooms are illuminated with daylight via inner courts and large window openings.

Library, Conference Rooms. The library and the conference room are located in the mezzanine above the auxiliary hall. The rooms are accessed via the central ramp, and are therefore likewise spatially connected to the terrace.