

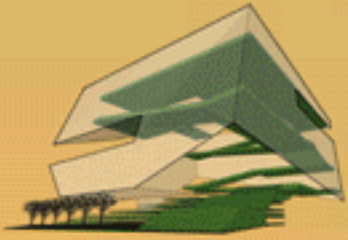


BEIRUT'S HOUSE OF ARTS AND CULTURE: EXTENDING A SCULPTURAL LANDSCAPE

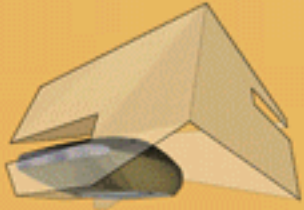
SCREEN



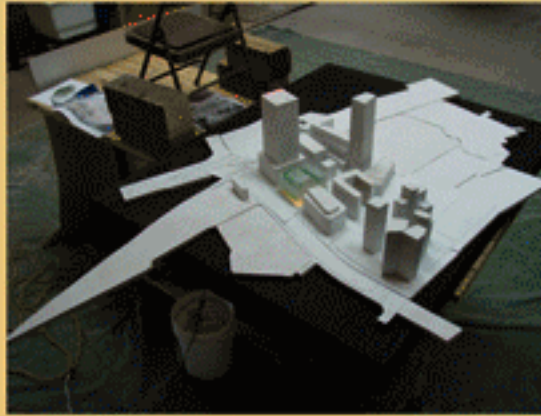
LANDSCAPE



THEATER



STRUCTURE



The city of Beirut is no stranger to rebuilding. Reinvigorating and reinventing itself in a changing world is what defines both the fabric of the city and the intensity and diversity of its peoples. As this evolution continues, Beirut finds itself with a cultural climate that demands principles of a free and open society. The House of Arts and Culture is a sanctuary where these cultural mores will be entrusted to the future with a sense of hope and invention. This haven for free thinking and inspired creation must embody the ideals of transparency and exchange which will lead the city forward. The House of Arts and Culture, therefore, stands not only as a space for creative and reflective activities to occur, but also as a monument to these processes: an iconic presence whose very form and materiality offer a recognizable image of openness, opportunity, and vision.

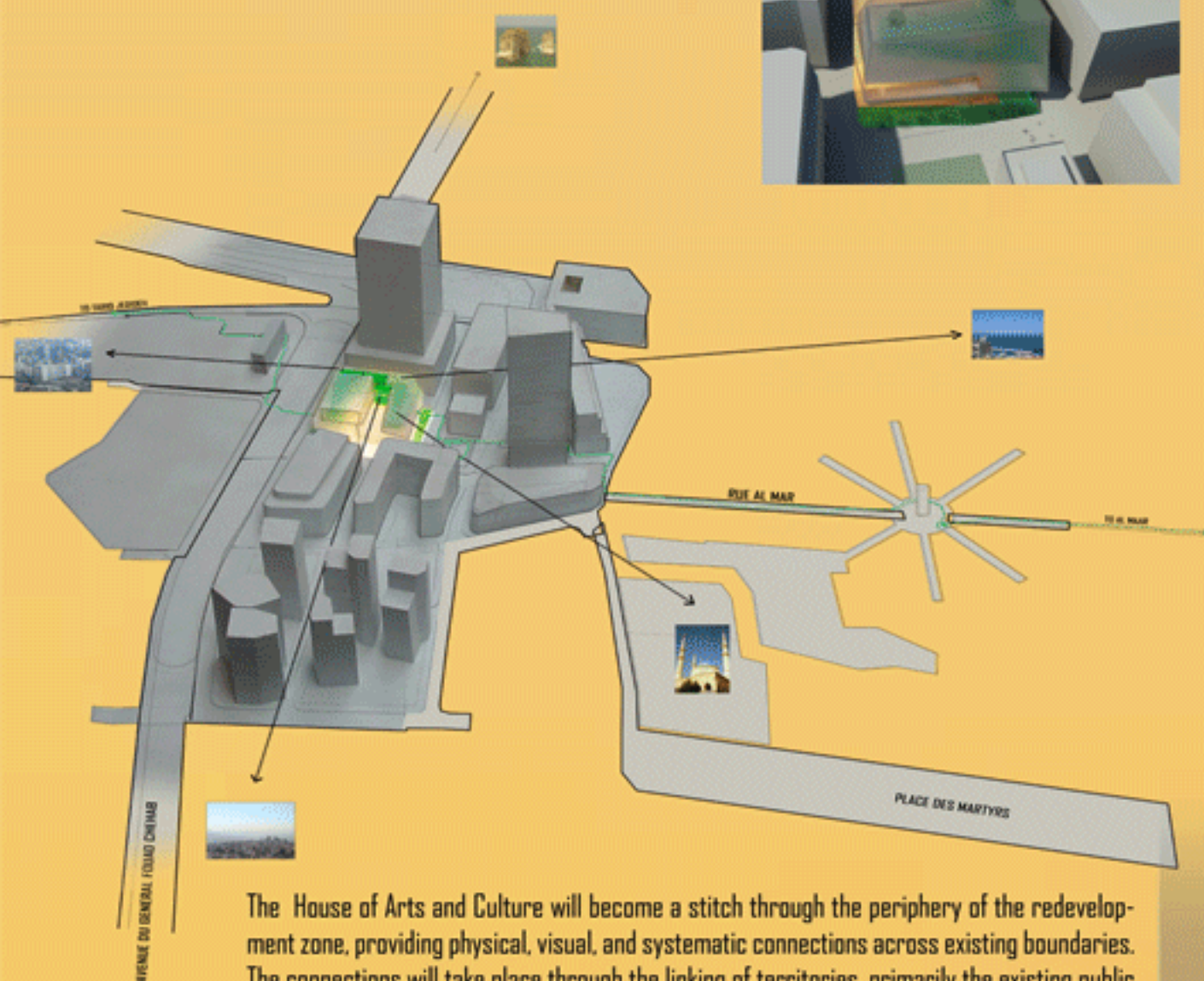
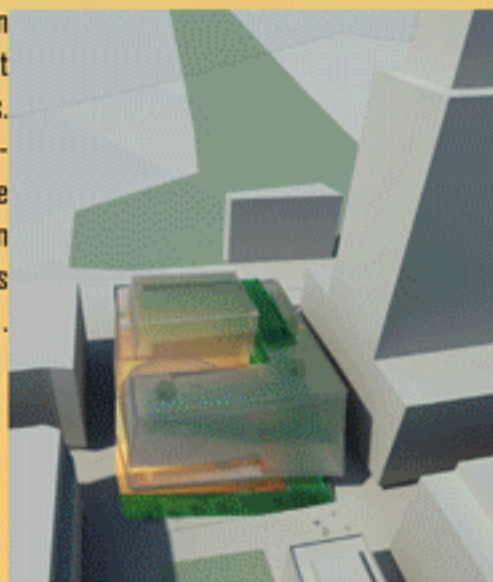


SITE

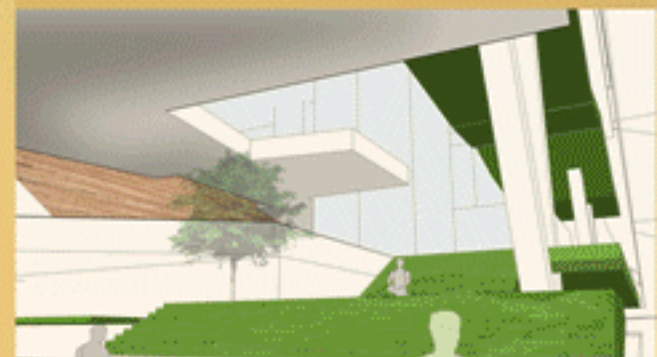
EXTENDING THE URBAN LANDSCAPE

The House of Arts and Culture is by design an extension of public space within the city. Green spaces and thoroughfares do not end at the entrance, but rather weave up through the entire building, offering new perceptions of the city and new opportunities to participate. Thus an attitude toward urban design informs the building, mingling new spatial experiences with indigenous plant life and generous views of the existing landscape.

The House of Arts and Culture is located on a peripheral site in the Solidere development scheme, bound on two sides by skyscrapers. The building turns this potentially awkward location into an opportunity to show a public face to the Landmark Hotel, allow for activity in the park to spill into its vestibule, and begins to solidify a connection across the ring road.



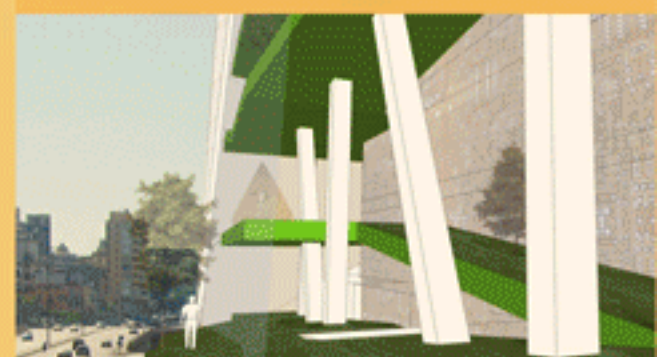
The House of Arts and Culture will become a stitch through the periphery of the redevelopment zone, providing physical, visual, and systematic connections across existing boundaries. The connections will take place through the linking of territories, primarily the existing public plazas and garden spaces to the north and south. The physical connection is the extension of the path of the street, primarily the Rue al Maar. The visual connection is reinforced with directed views to the north and south throughout the processional space in the building.



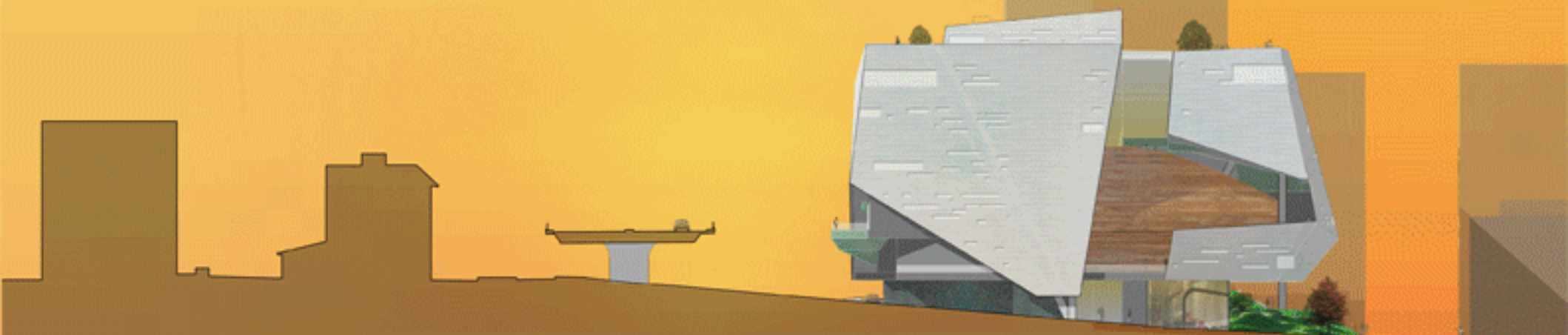
1. The entrance to the House of Arts and Culture is at once a stepped garden, grand vestibule and amphitheater for watching films and video art from atop the broad steps.



2. Once inside the main entry doors, visitors are greeted with interactive digital displays. The exterior skin is drawn up revealing views to the Landmark and the Hotel Bacri framed by the monumental columns.



3. Moving through the atrium exhibition space, one sees southward beyond the Avenue Du General Chehab, and one can even step outside onto balconies on the way up or down. The gentle slope of the exhibition landscape and the continuous horizontal space allows for sights, sounds, and breezes to move through the space freely.

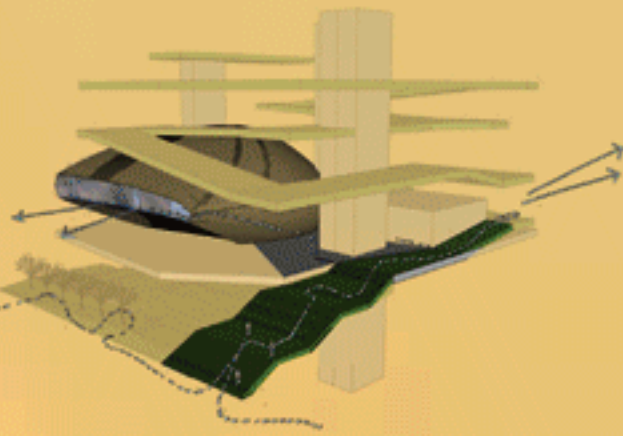
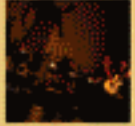


COMMUNITY

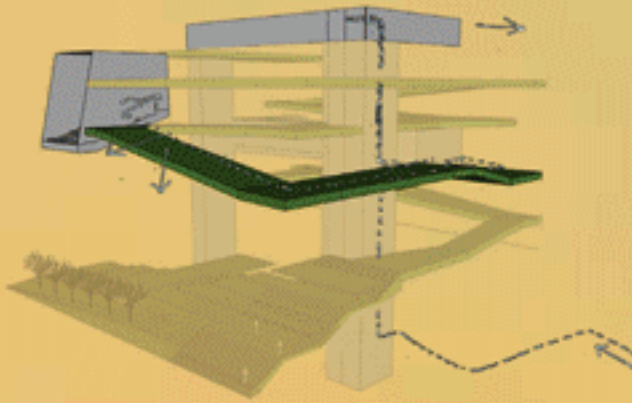
EXTENDING CULTURE TOWARDS THE FUTURE

The House of Arts and Culture not only extends the experience of its users into its surroundings, but also acts as a cultural sponge, drawing a wide range of experience, talent, and insight into its operations. By extending a forum for engagement and renewal into the realm of artists, policy-makers, and citizens alike, the institution will establish and nurture an immense and diverse community. This community, based on free exchange, multidisciplinary collaboration, and global participation, will be an esteemed destination for dedicated artists, researchers, and patrons from Lebanon and around the world.

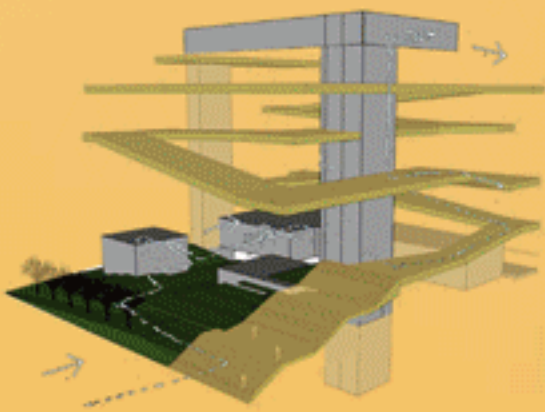
BUILDING COMMUNITY THROUGH CROSS POLLINATION OF PROGRAMS AND SPACE



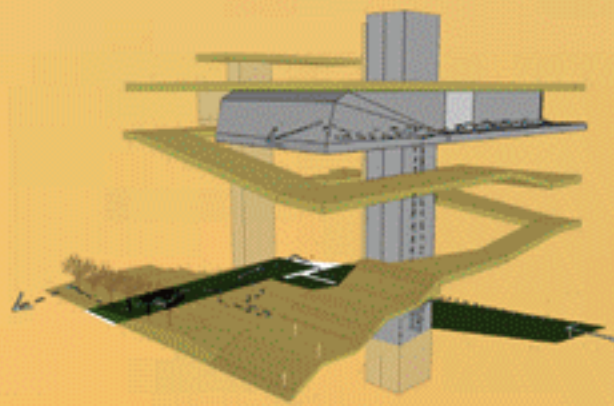
A couple attending an evening performance approach the House of Arts and Culture meet at the stepped entry. On the way in, they see views across the ring road to the city beyond, and at intermission they take a moment to look out from the theater's terrace.



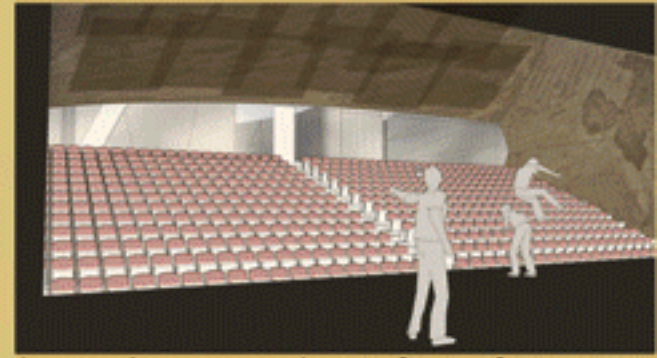
A visiting video artist arrives from the Jounblat neighborhood. After working in her studio she takes a look at the exhibit on the Level 02 exhibition space and attends a screening of a David Lynch film at the Cinema.



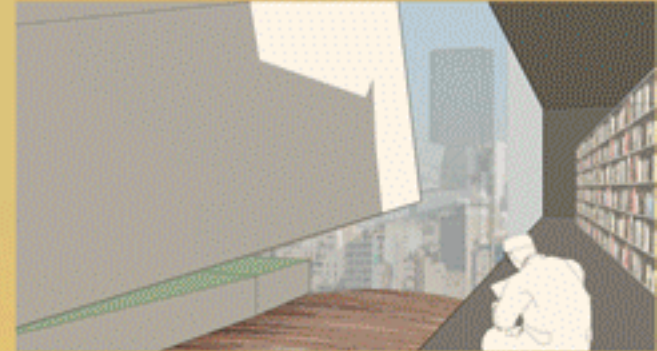
A woman who paints in her spare time visits the bookshop to find a book about her favorite artist. An HAC resident artist comes down to the bookshop to purchase a book on a current exhibition, and they meet and end up discussing painting techniques in the garden outside.



A resident film scholar enters the building from the south side. After viewing a restored copy of Bayna Hayakel Ba'albeck by Julio De Luca and Karam Boustany at the Cinematheque, he exits on the north side to meet a friend at the Place de L'Etoile.



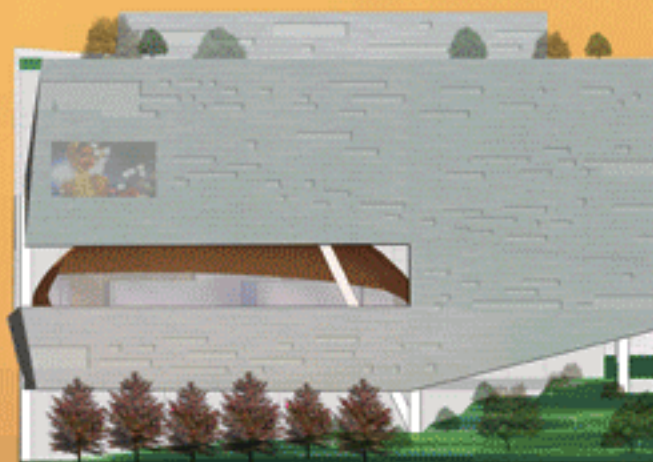
A visiting dance troupe rehearses for a performance in the main theater. One can ascend the steps upward for a view to the street below.



4. From the north end of the library a reader can study or take a break to daydream next to the glass wall and curved theater roof gazing eastward down the light and view corridor to Rue Gaihouh beyond.



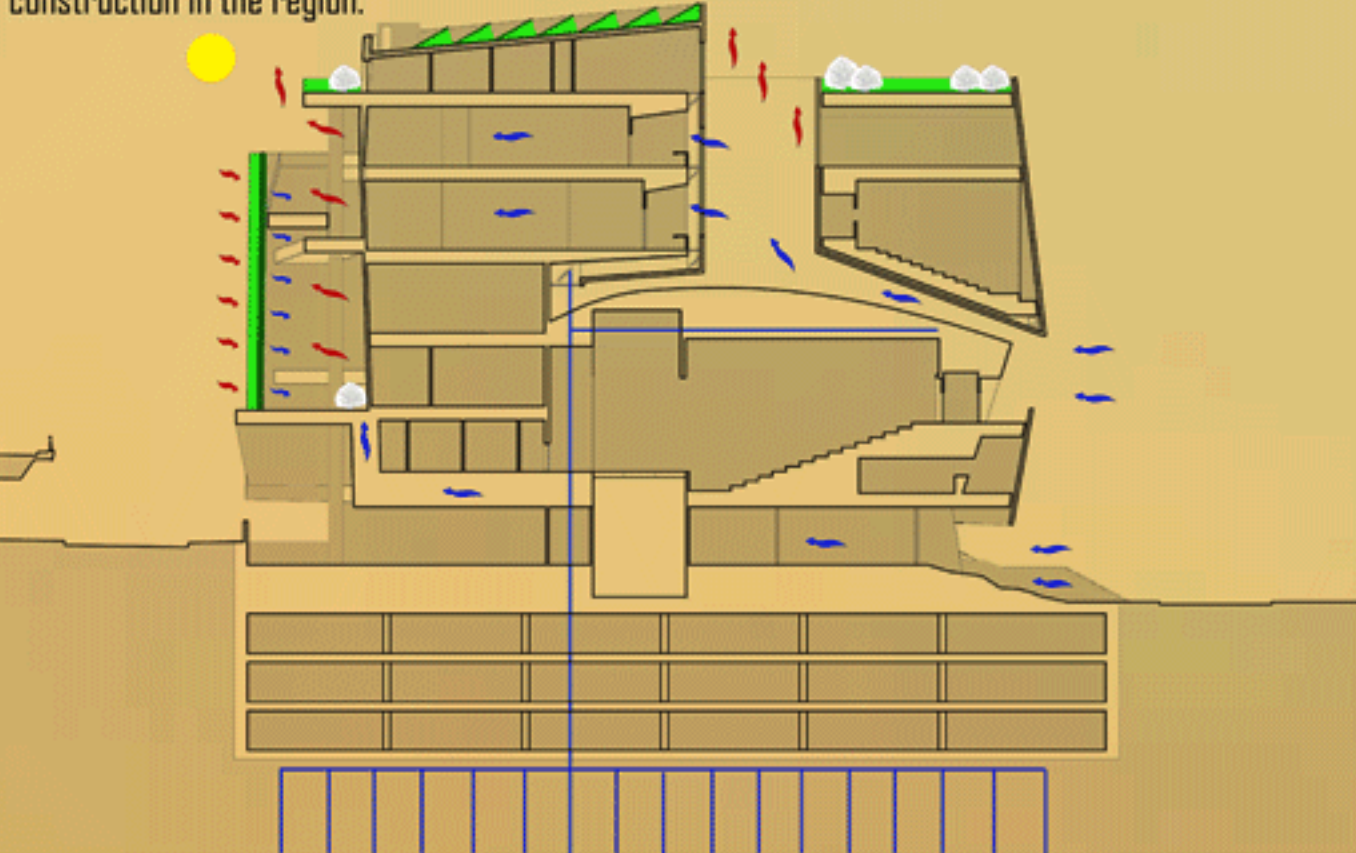
5. A visiting artist puts the last touches for an exhibit in the upper level exhibition space. A view to the mountains can be seen from the balcony.



SUSTAINABILITY

EXTENDING THE LIFE AND ENERGY OF THE BUILDING

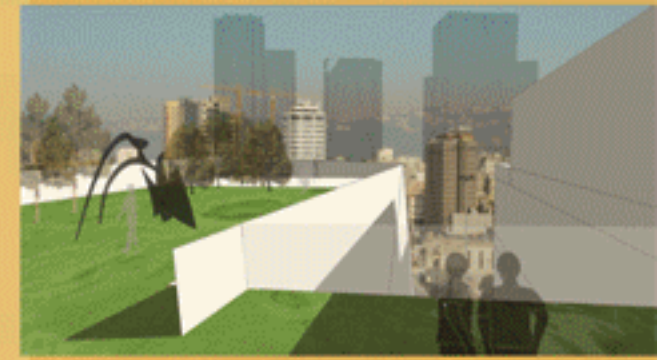
As a cultural monument and a beacon within the community, the House of Arts and Culture must be constructed as an enduring landmark. This not only means quality materials and state-of-the-art technological systems, but a forward-looking attitude toward the future of our cities and our planet. The institution of ecologically-minded building systems and habits will set a new standard for continued construction in the region.



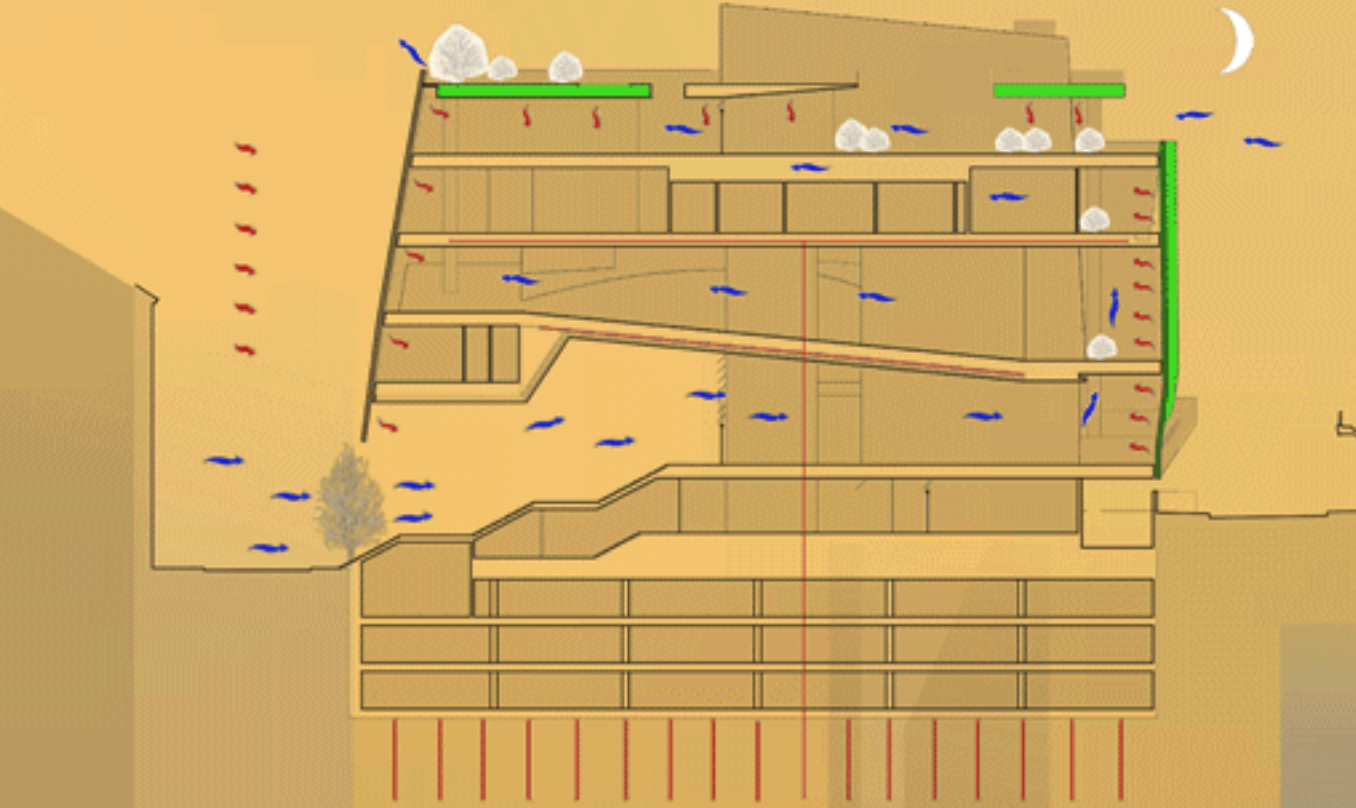
7. The exhibition landscape accommodates a large crowd at the opening night of a Bjork video premier.



8. The main exhibition space allows for views to the north, west and east, as well as open space for the display of large scale installation art.



9. The sculpture roof garden allows for views of the surrounding city and landscape as well as space for large scale works.



The large shaded areas along the North create a pocket of cool air along Rue Ghalghoul which is funneled up through the various atria to passively cool the building. Folds and openings in the roof and mediating skin create drafts which help to pull this air upward through the atria, and capture prominent winds from the southwest to augment circulation. A geothermal system harnesses the constant ground temperature of the earth's thermal mass to maintain comfortable temperatures in the building through daily and seasonal cycles. Similarly, the stone of the façade also utilizes thermal mass for this purpose, while deflecting much of the harsh sun. A southern roof-scape of angled photo-voltaic panels harvest this sunlight to power the building and ensure energy supplies even in emergencies.

