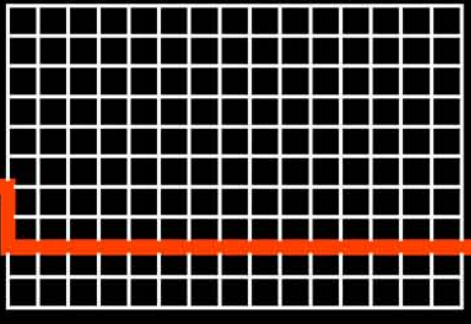


LA CAVERNE // UN INTERSTICE URBAIN



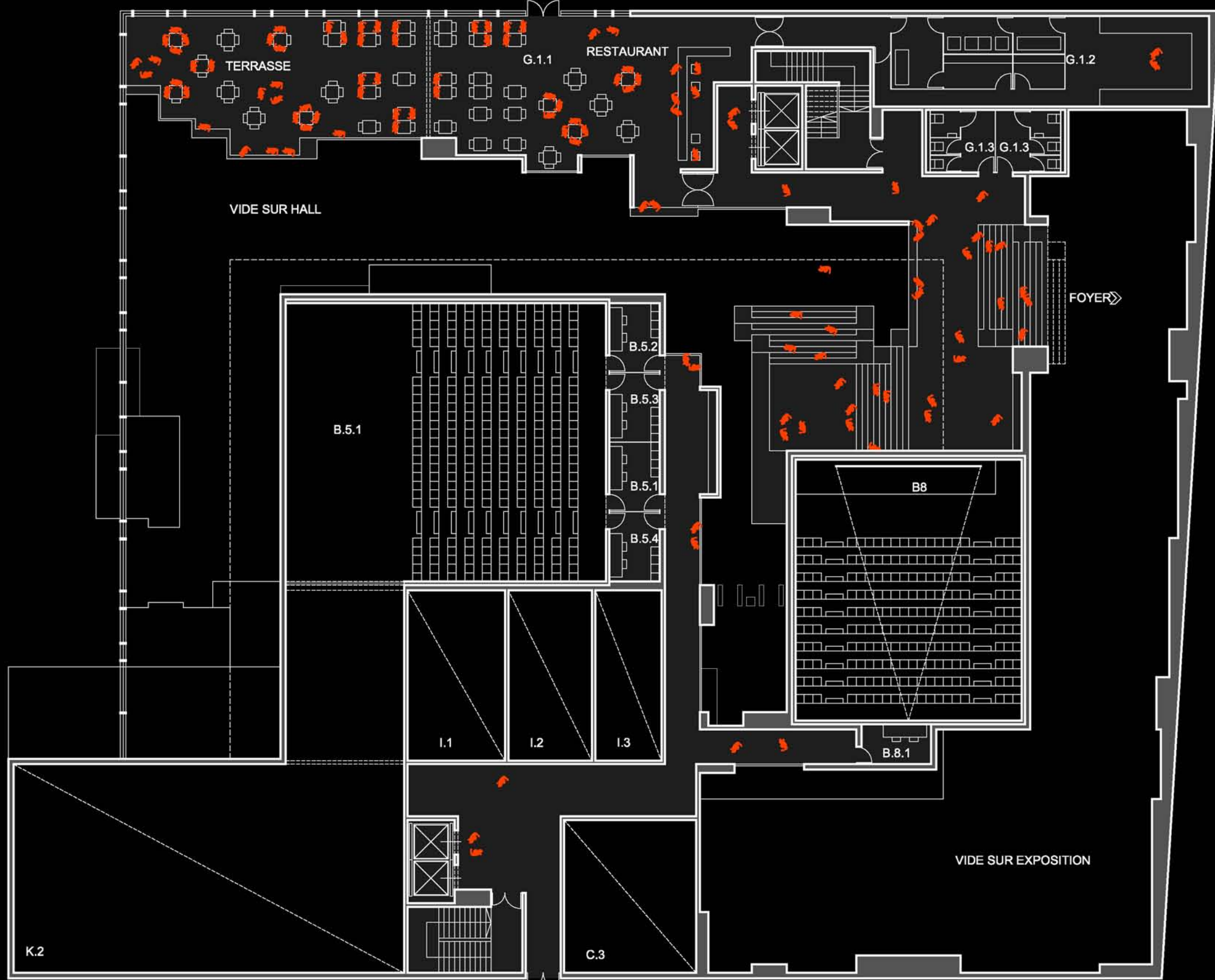
IDENTITE NATIONALE



IDENTITE URBAINE



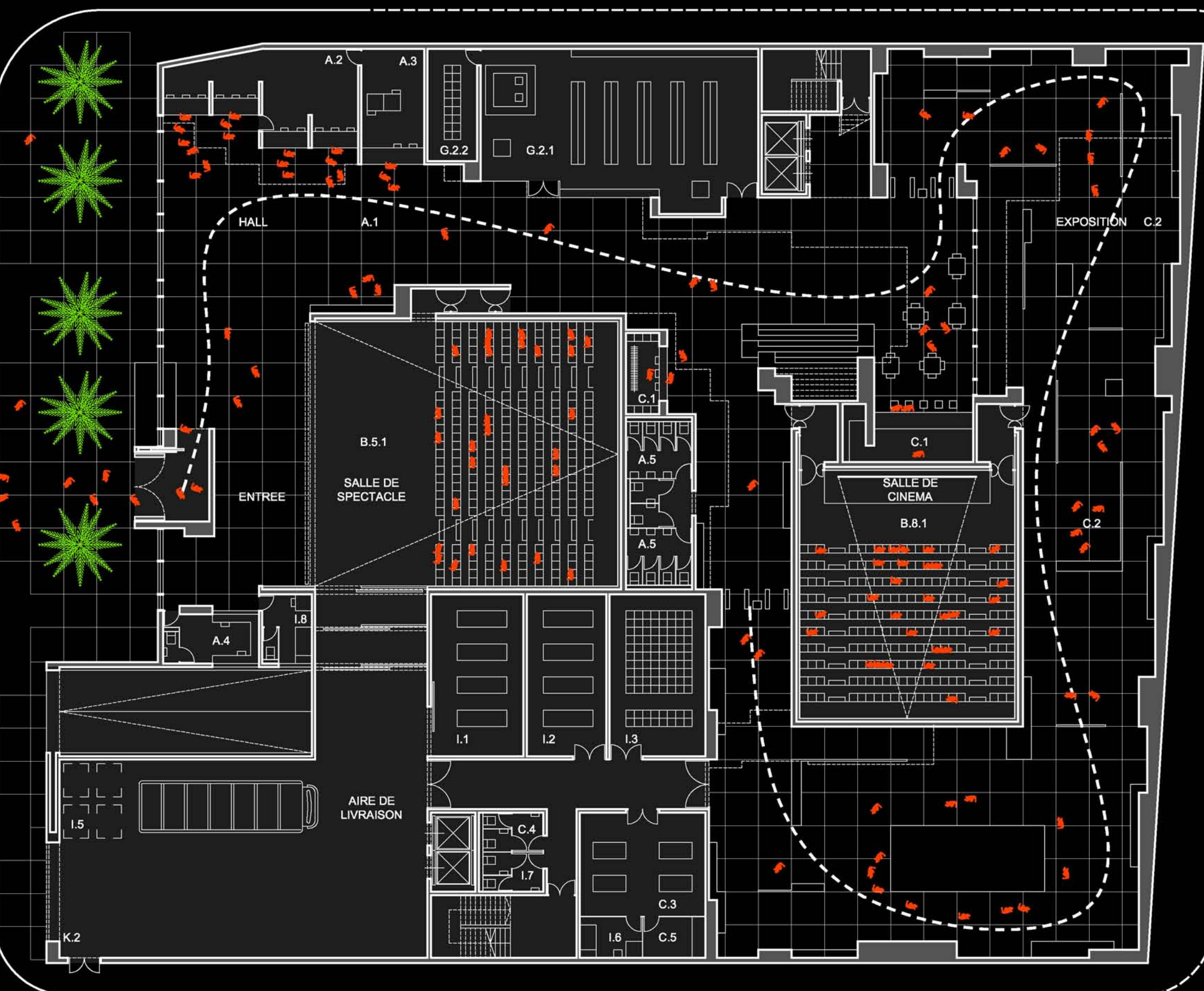
IDENTITE CULTURELLE



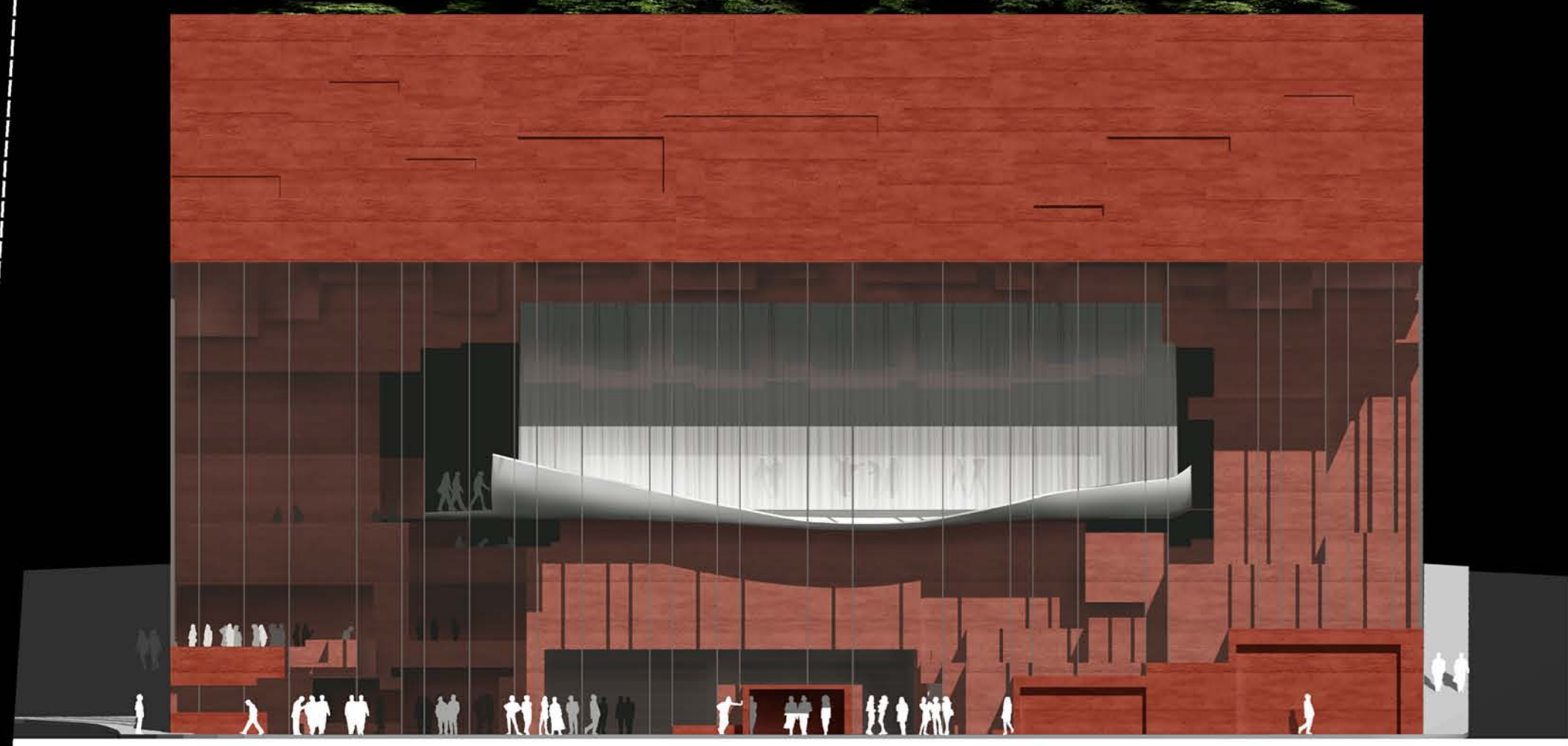
R+1 / +03.20 // RESTAURANT // TERRASSE



R+2 / +6.08 // FOYER // LOGES // REUNIONS

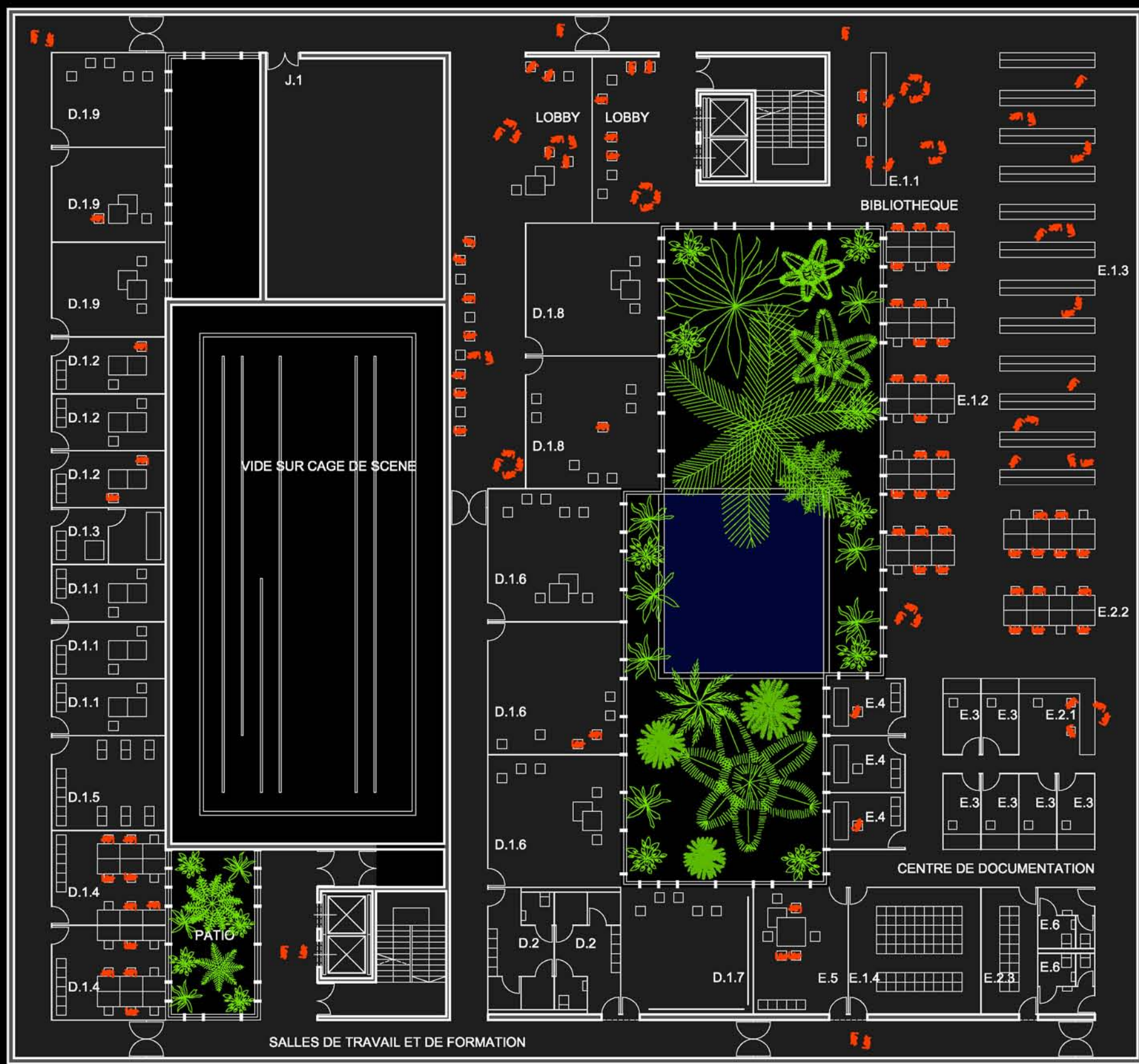
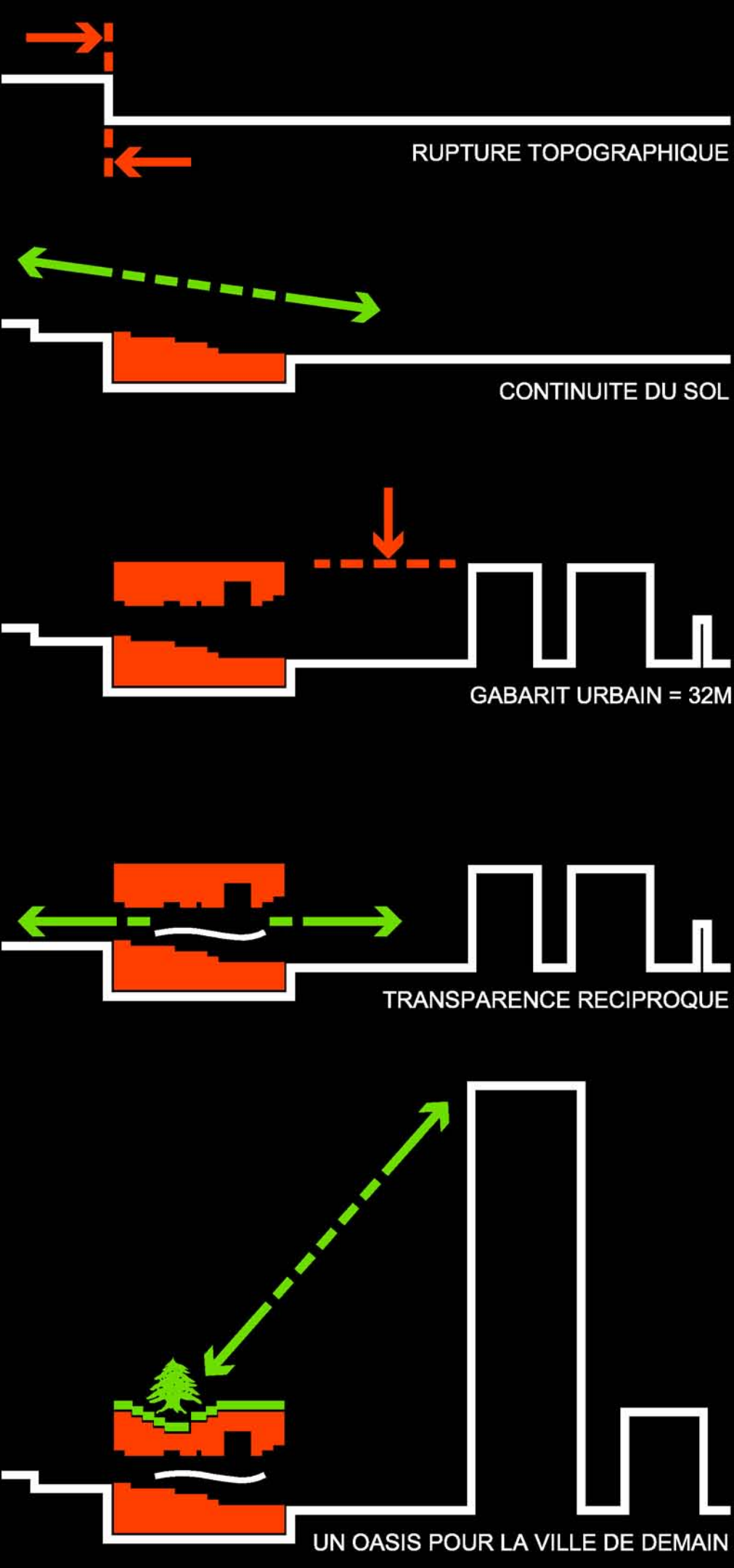


RDC / +0.00 // ENTREE // BLACK BOX 250 // CINEMA 200 // EXPOSITION

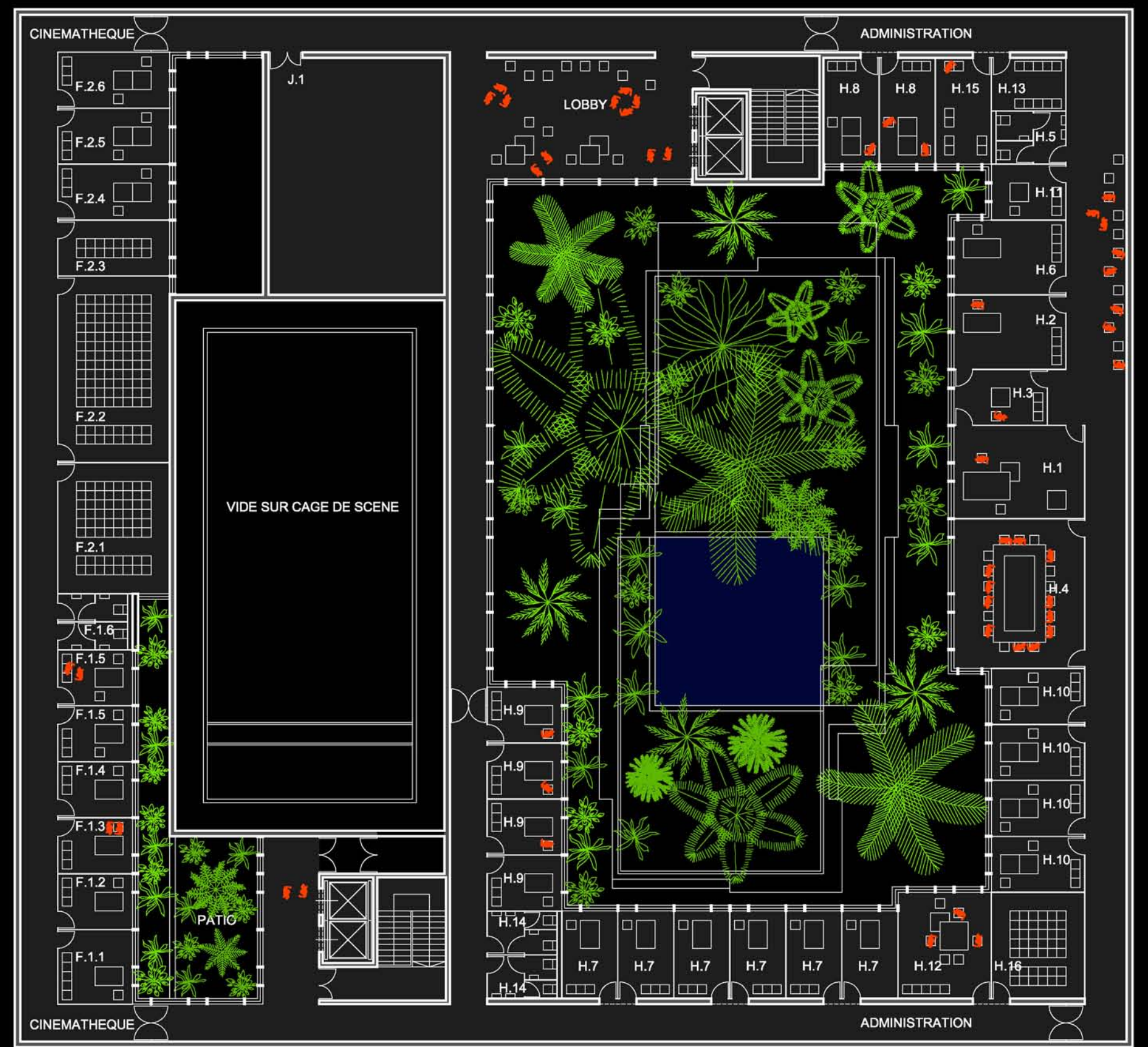


NORD // ENTREE //

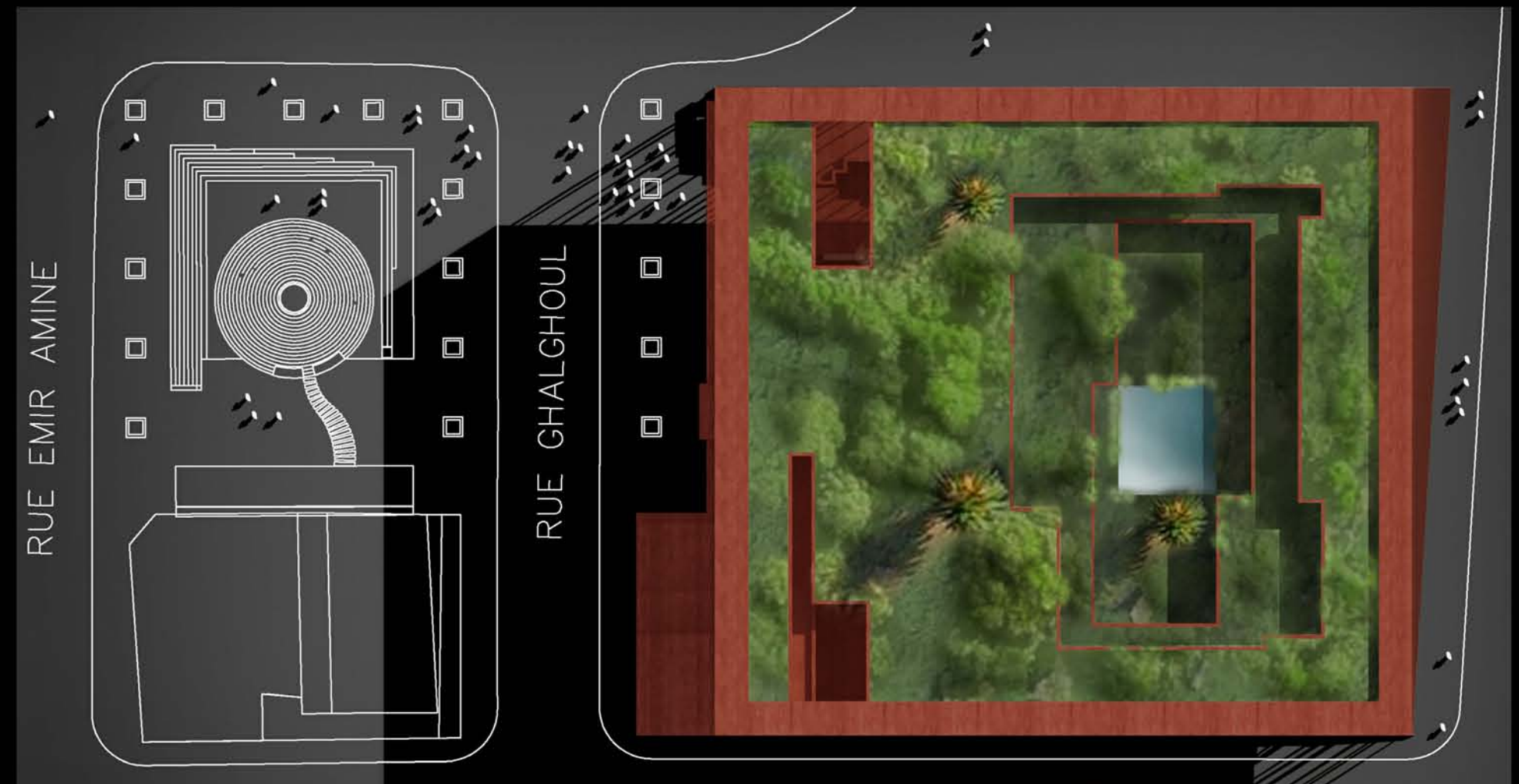
L'OASIS // L'AVENIR EN CULTURE



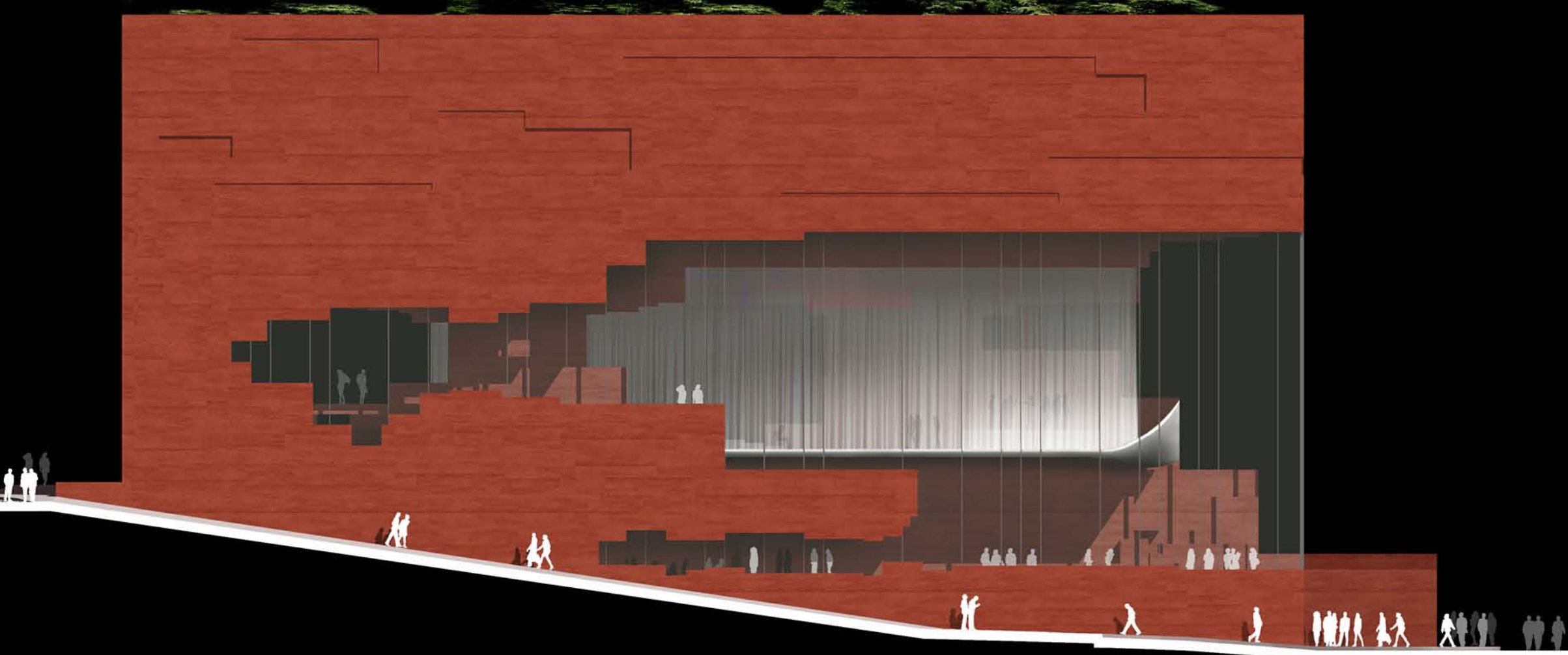
R+5 / +21.60 // BIBLIOTHEQUE - DOCUMENTATION // TRAVAIL - FORMATION //



R+6 / +26.20 // ADMINISTRATION // CINEMATHEQUE //



PLAN MASSE // L'OASIS //



EST // CONTINUE DU SOL // ENTRE L'AVENUE ET LA PLACE //



SUD // L'AVENUE

CONCERT

OPERA

THEATRE

SHOW

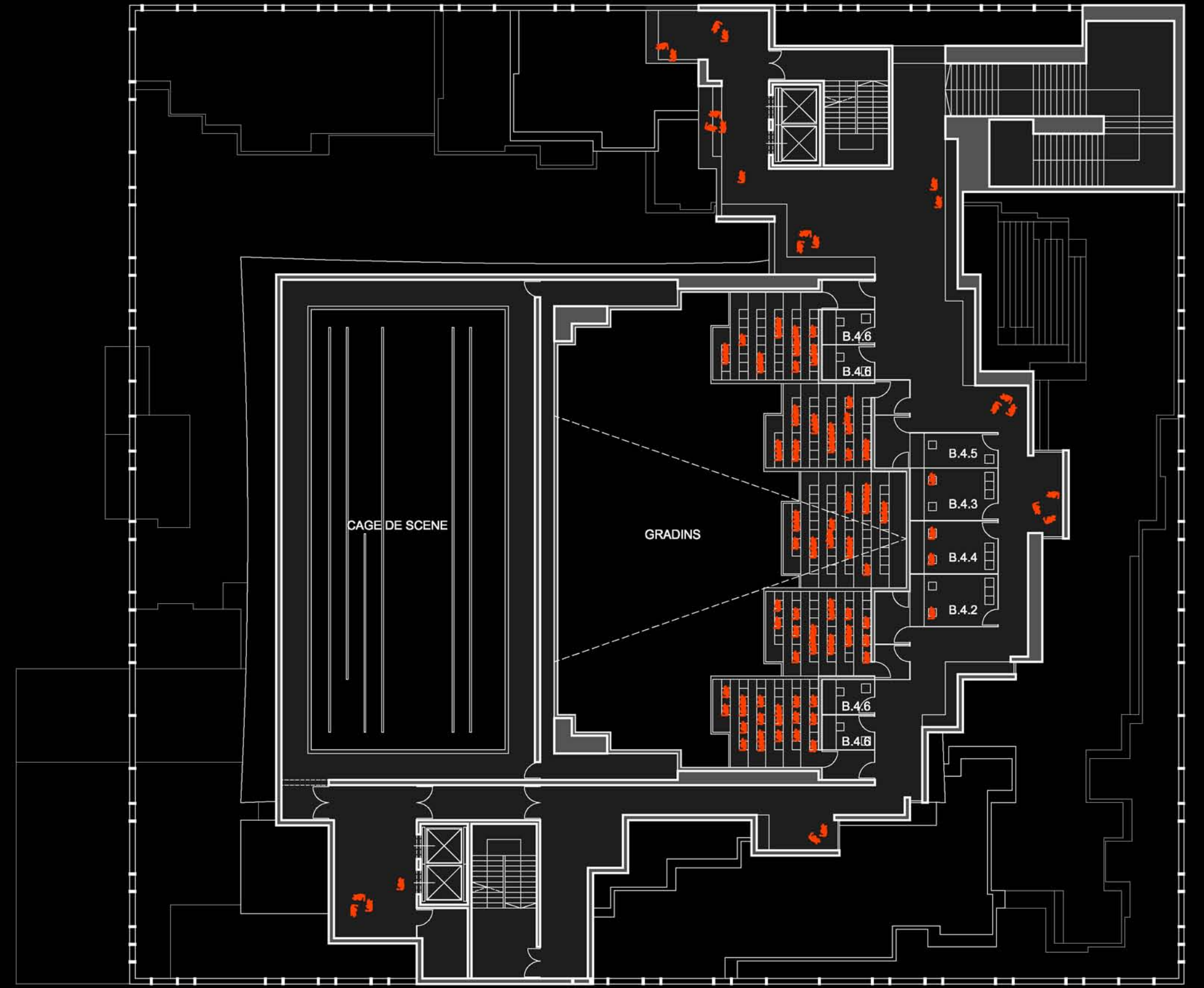
ETC...



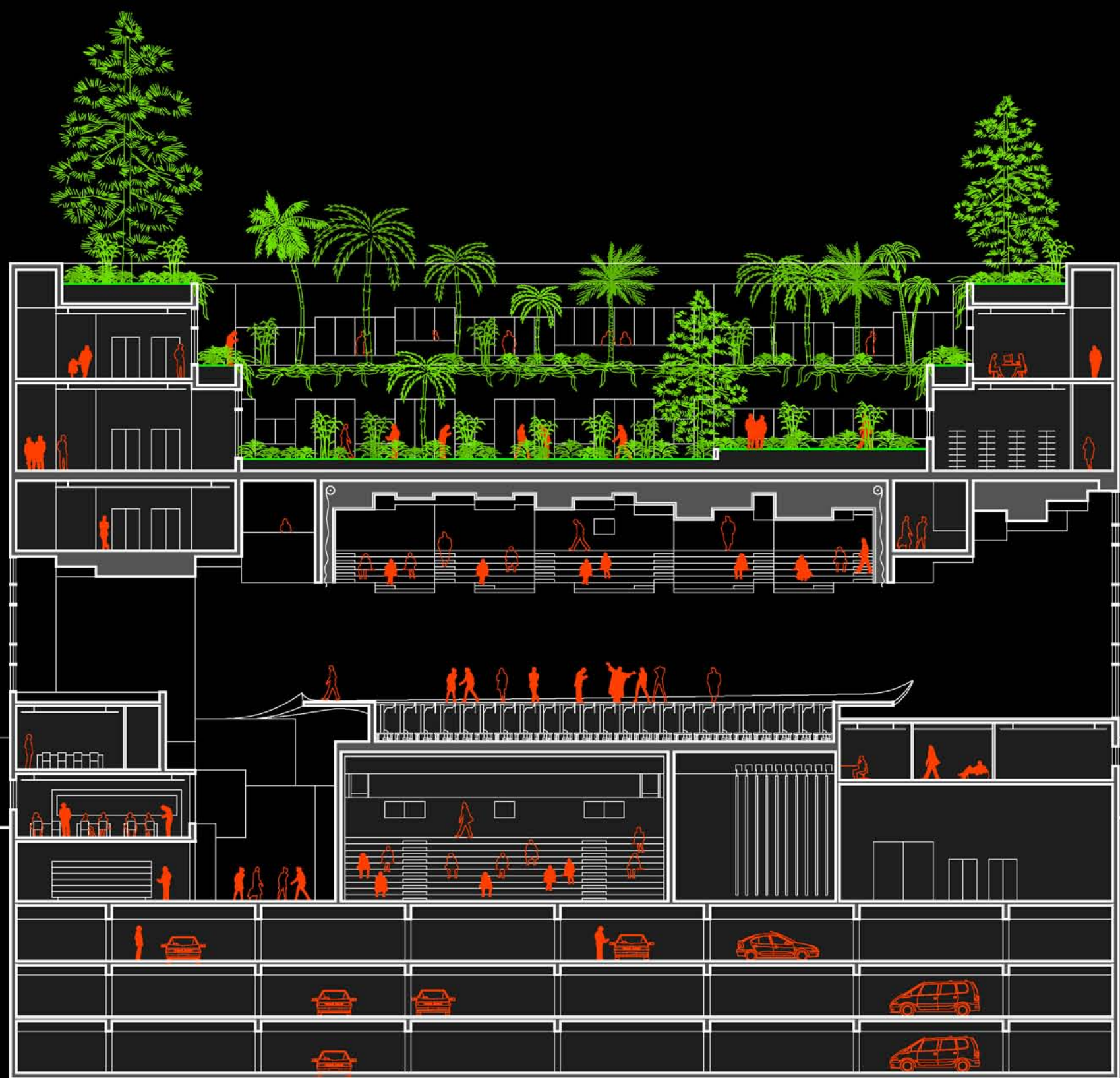
LE TAPIS VOLANT // UN TRESOR SCENOGRAPHIQUE



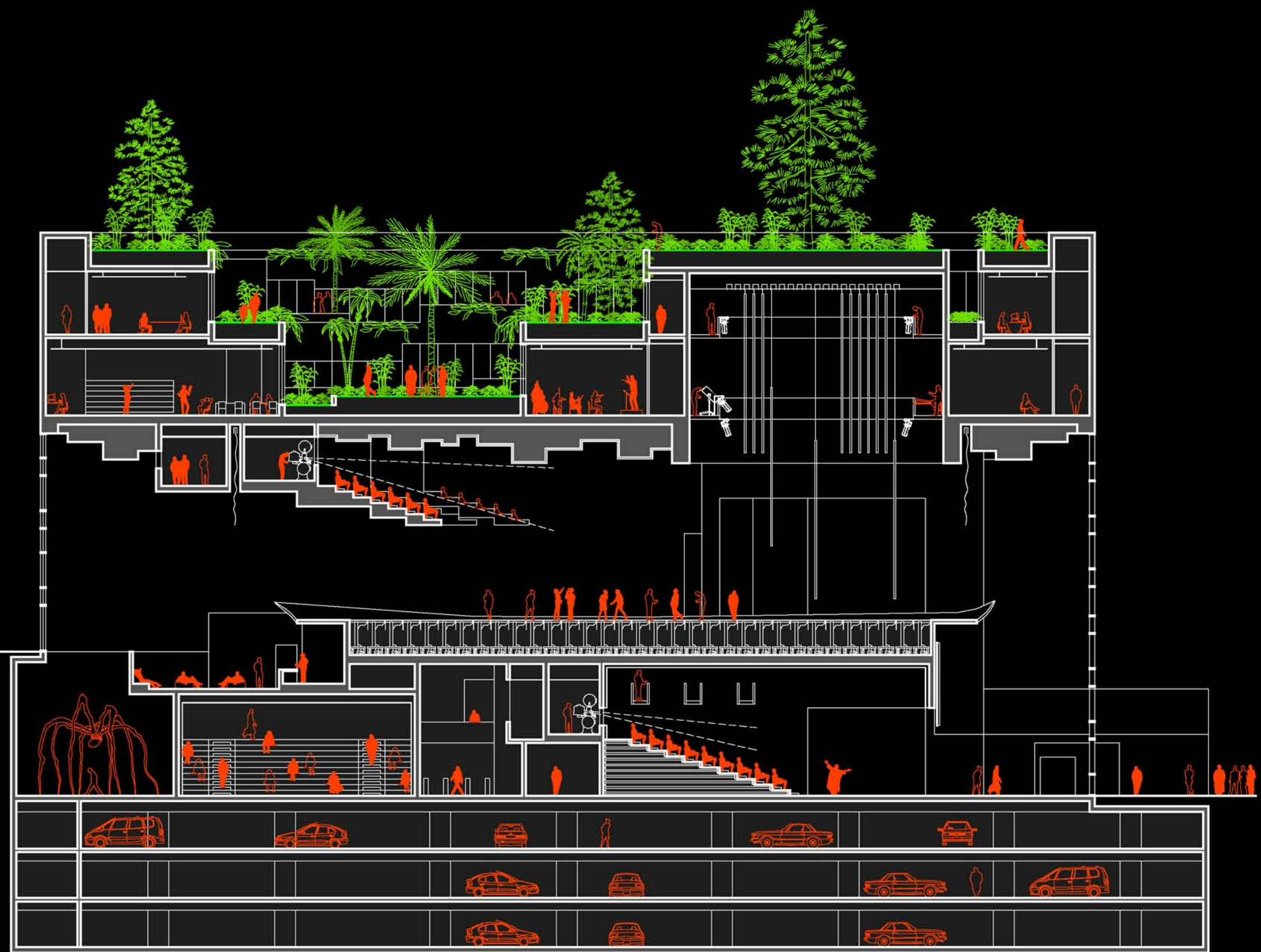
R+3 / +10.00 // LE TAPIS //



R+4 / +17.60 // LES GRADINS //



EST-OUEST



NORD-SUD // BLACK BOX 250 // CINEMA 200 // TAPIS VOLANT // GRADINS //