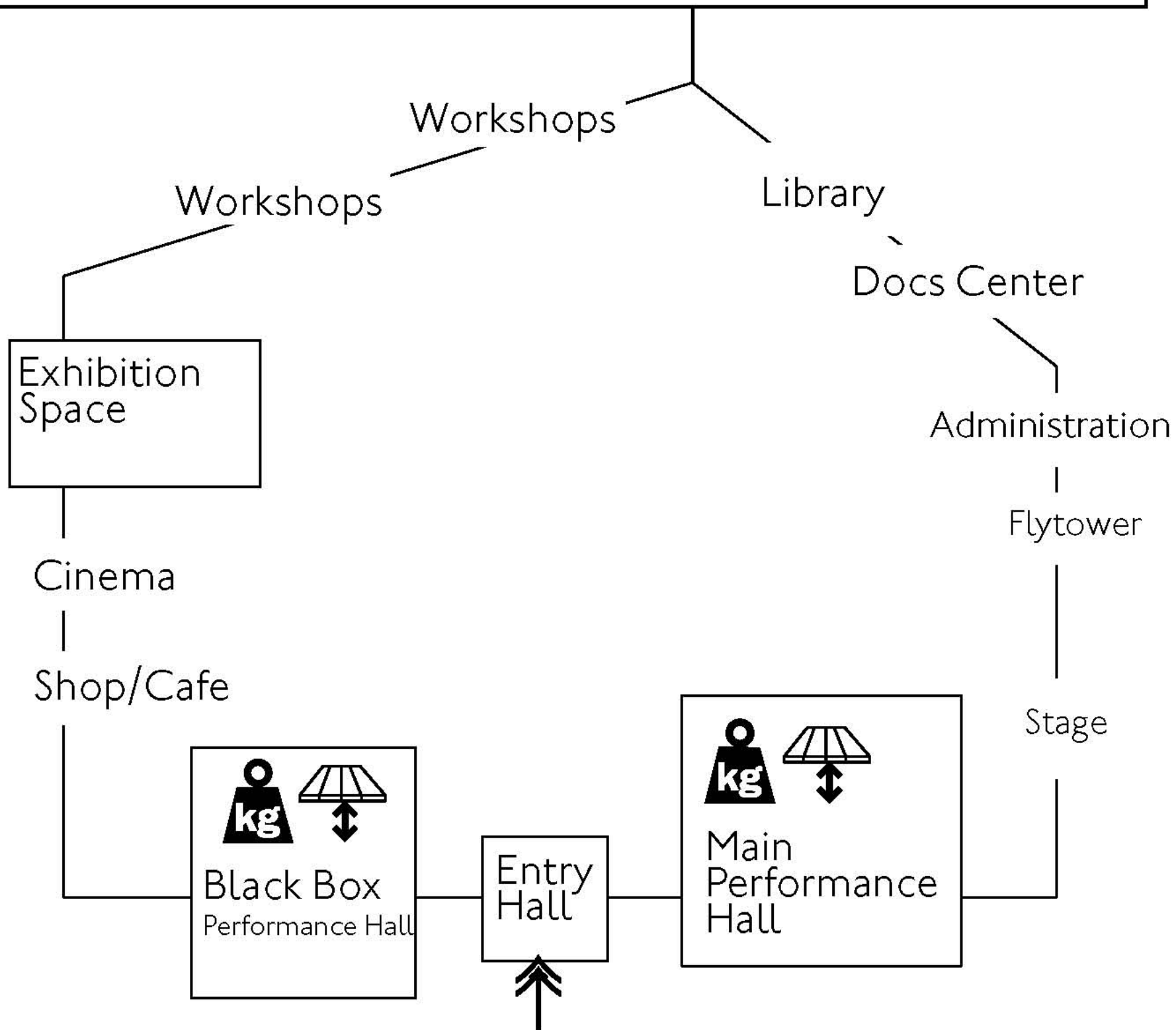
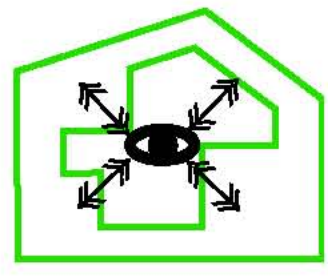


# House of Arts an Culture



Iconic

A single unitary volume with a clear and robust urban presence of oneness yet intricate in its interior expressing the diversity of its program.



Openess

The full occupation of the site is offset by the open core around which all program elements revolve.



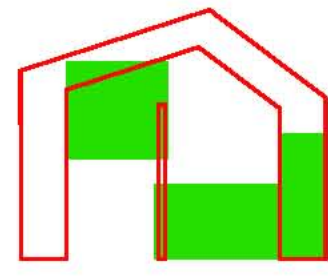
Transparency

The proposal counters see-through frontal link North-south against a staunch lateral solidity which defines a unique urban gesture



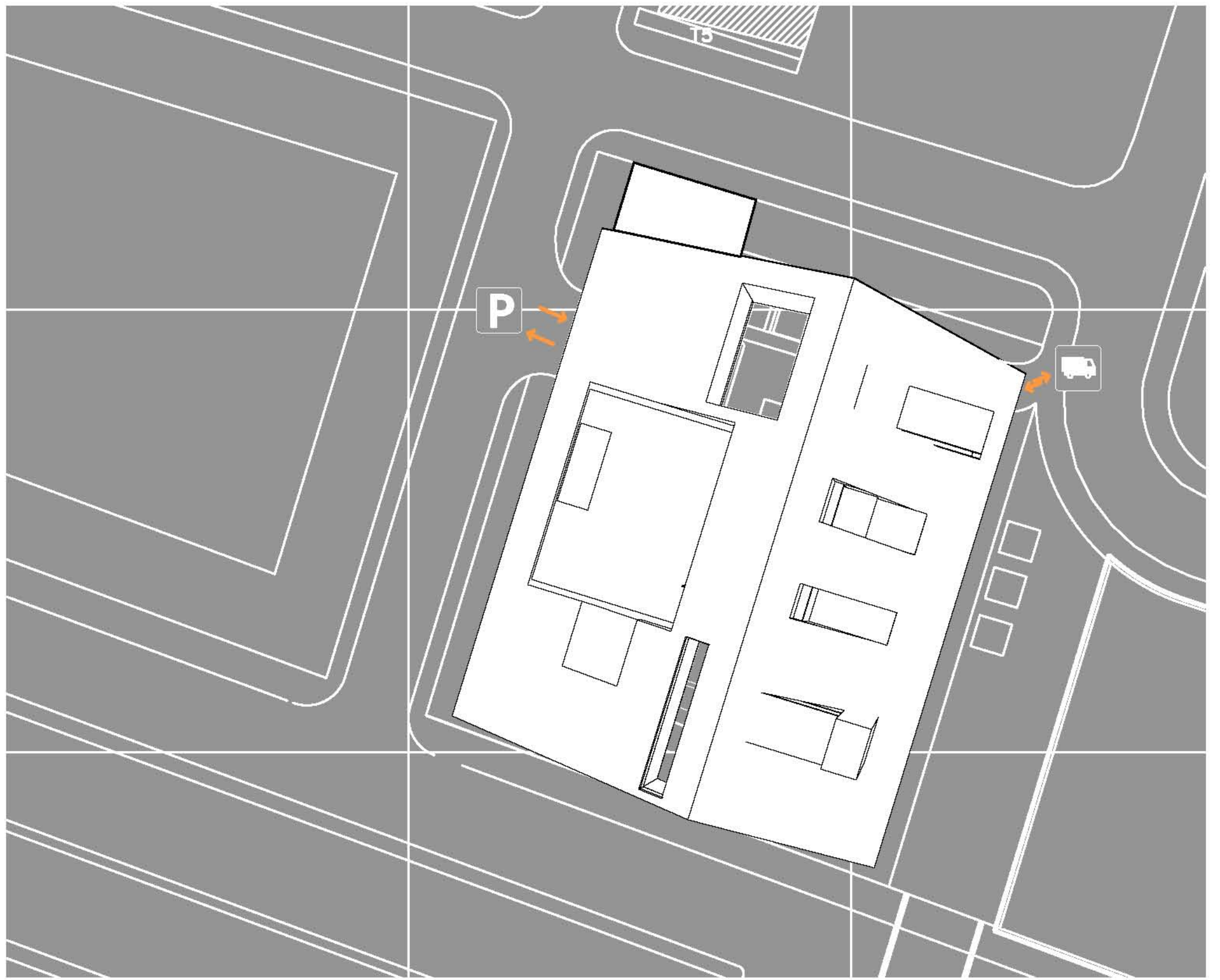
Strata

The program is divided into attic-like terraced space for Work/Study; singular prominent volume for Exhibition and a carved out base for Performance.

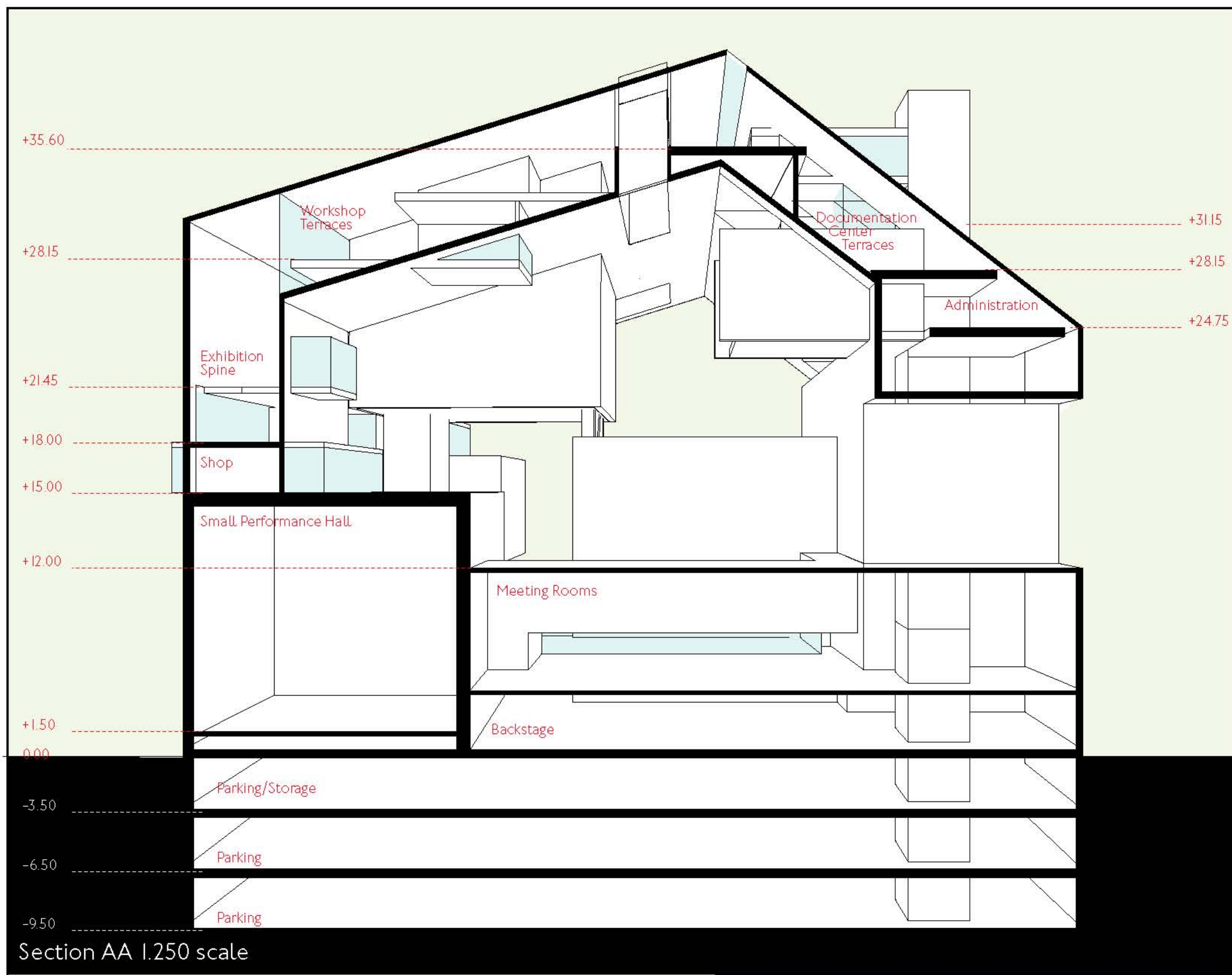


Structure

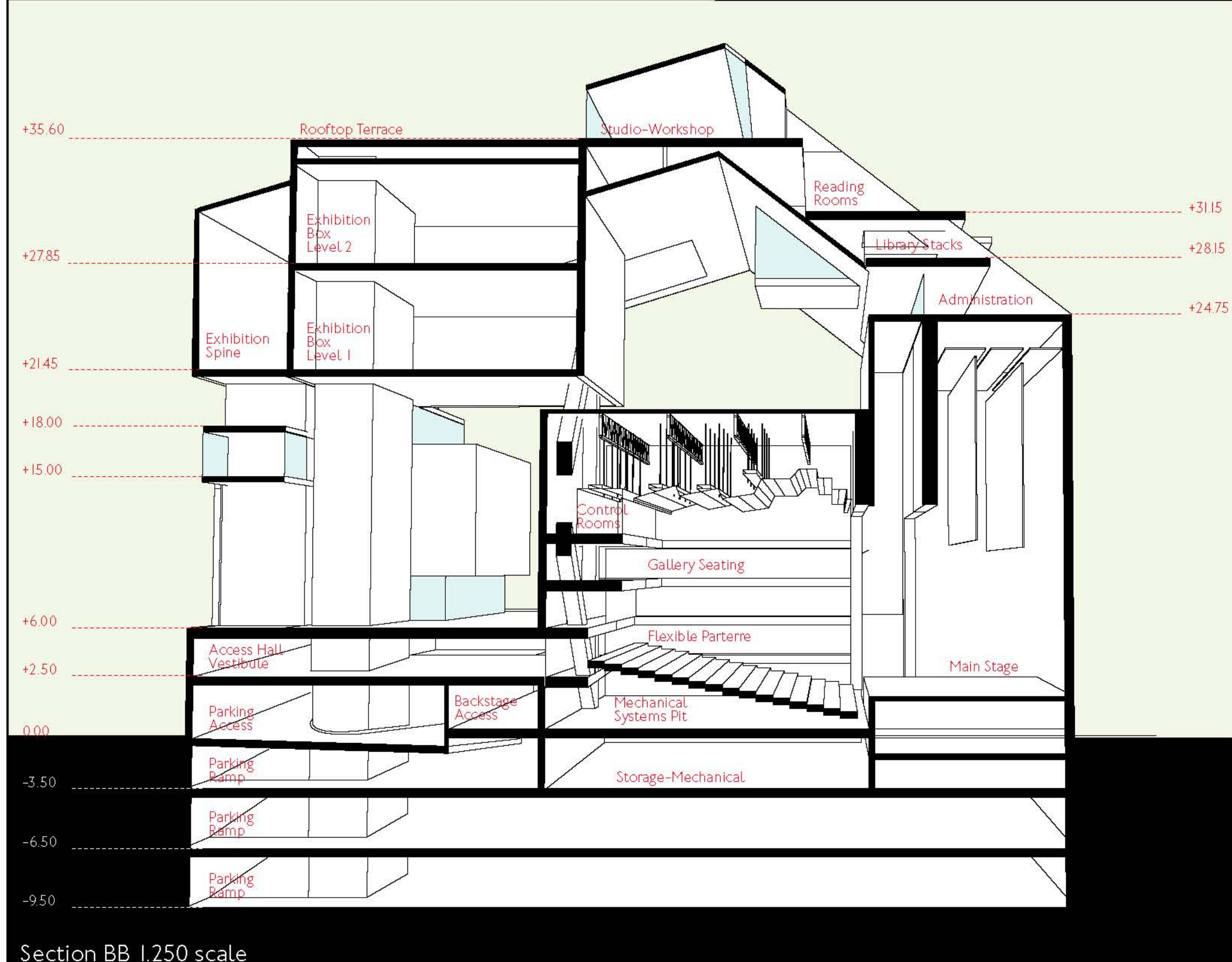
A frame structure operating as a shed defines the main frame while the interior specific volumes articulate a secondary order.



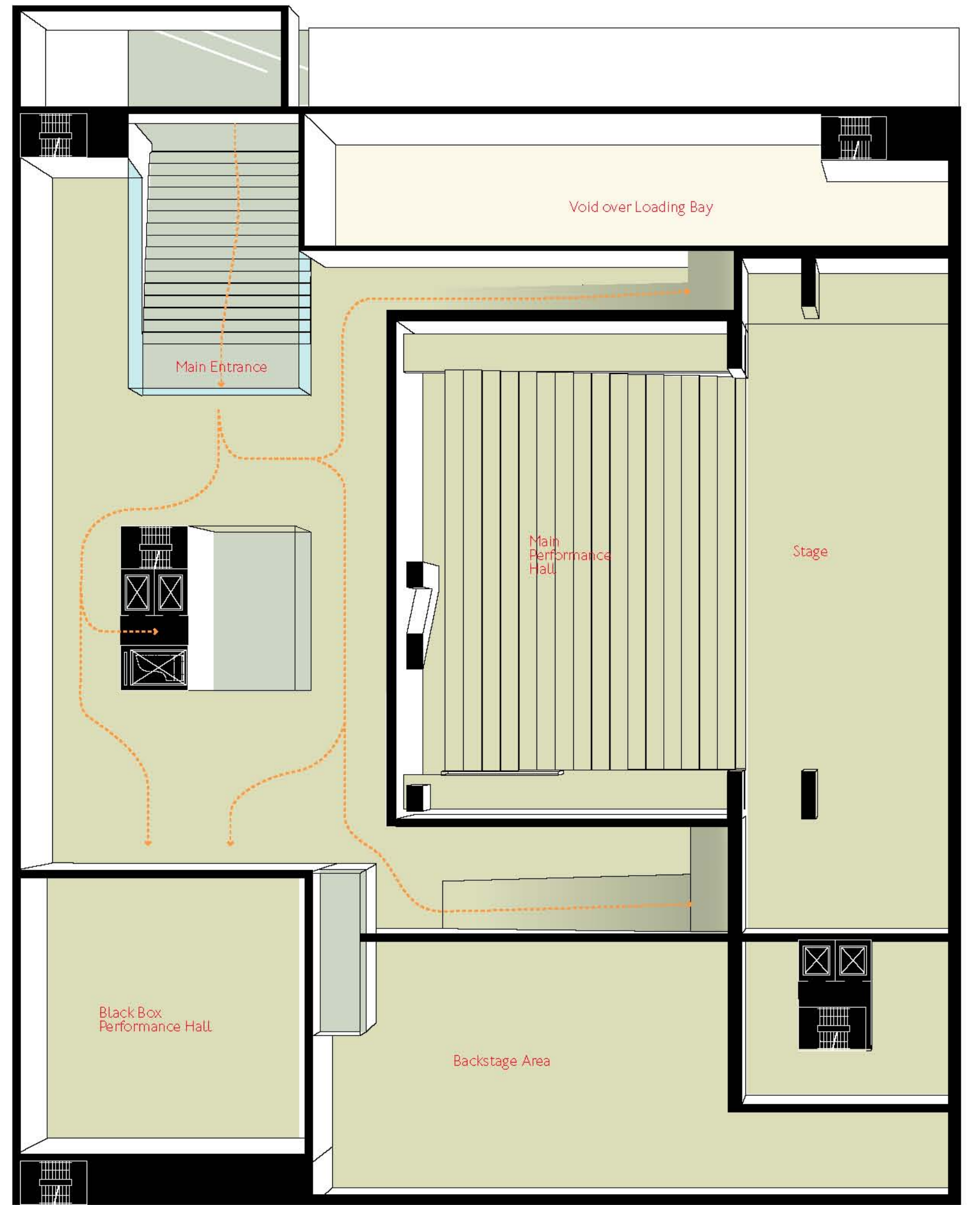
Site Plan 1.500 scale



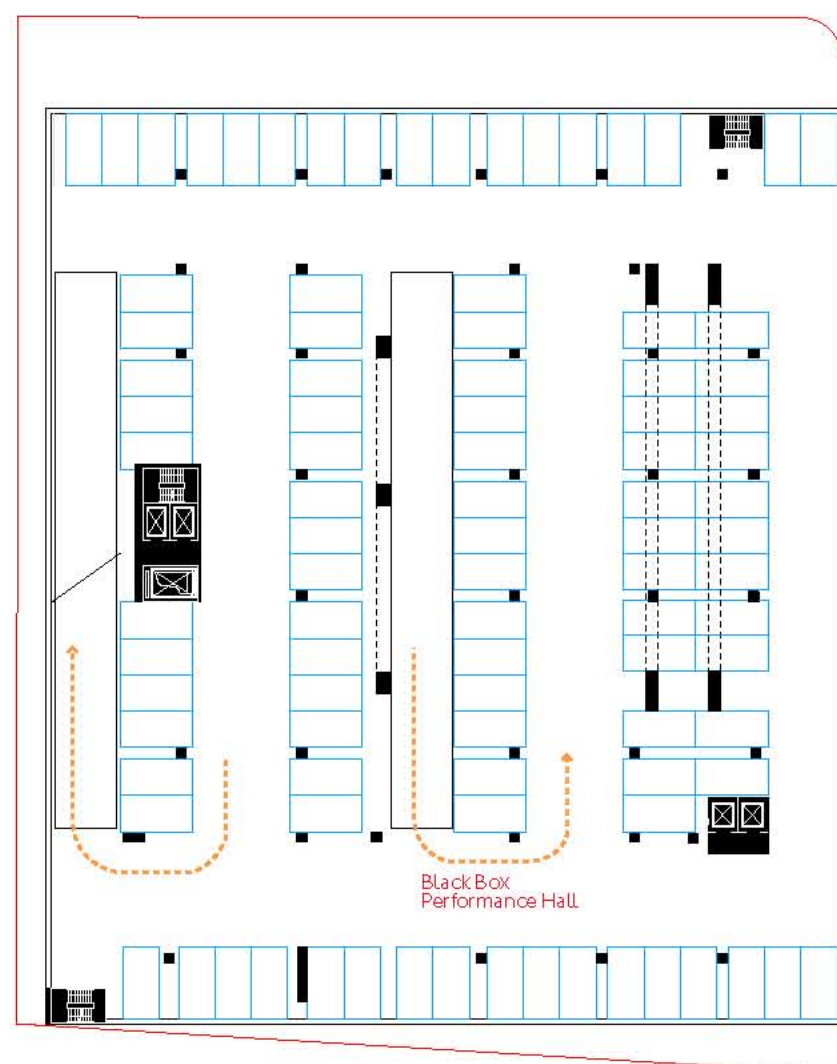
Section AA 1.250 scale



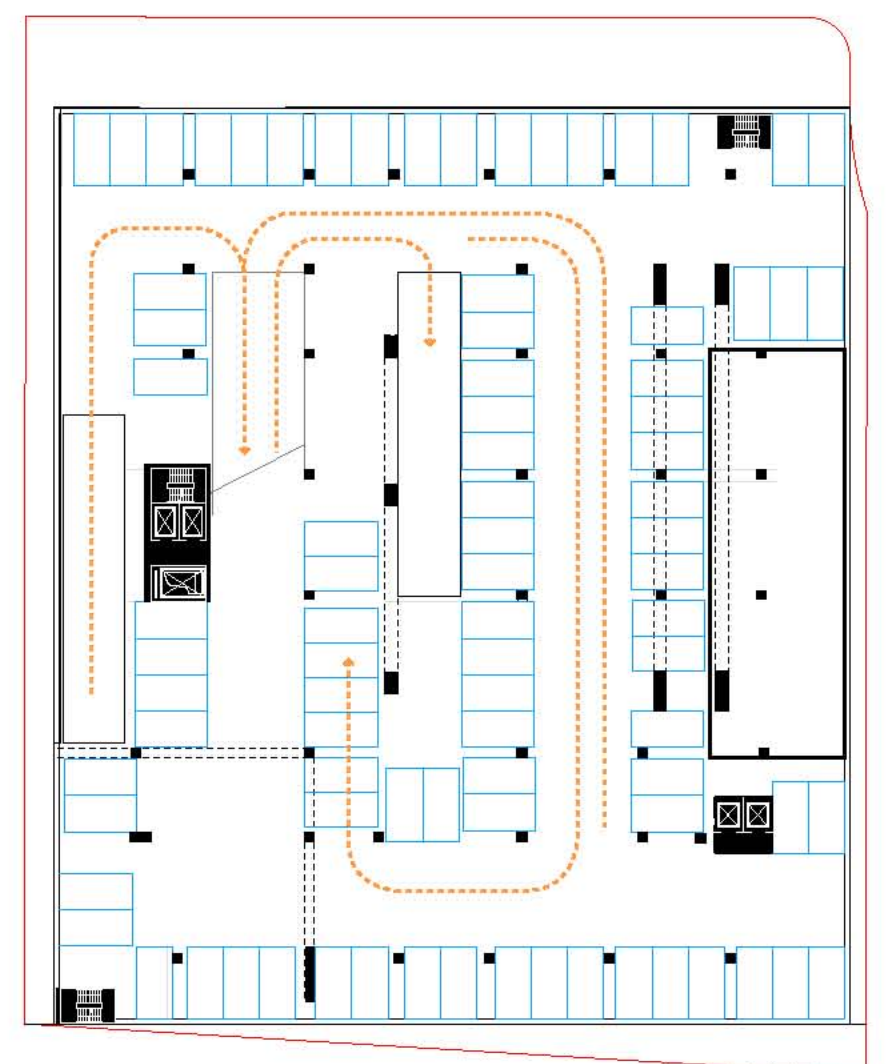
Section BB 1.250 scale



Stage Level +1.20 / Access Level +2.50 1.250 scale

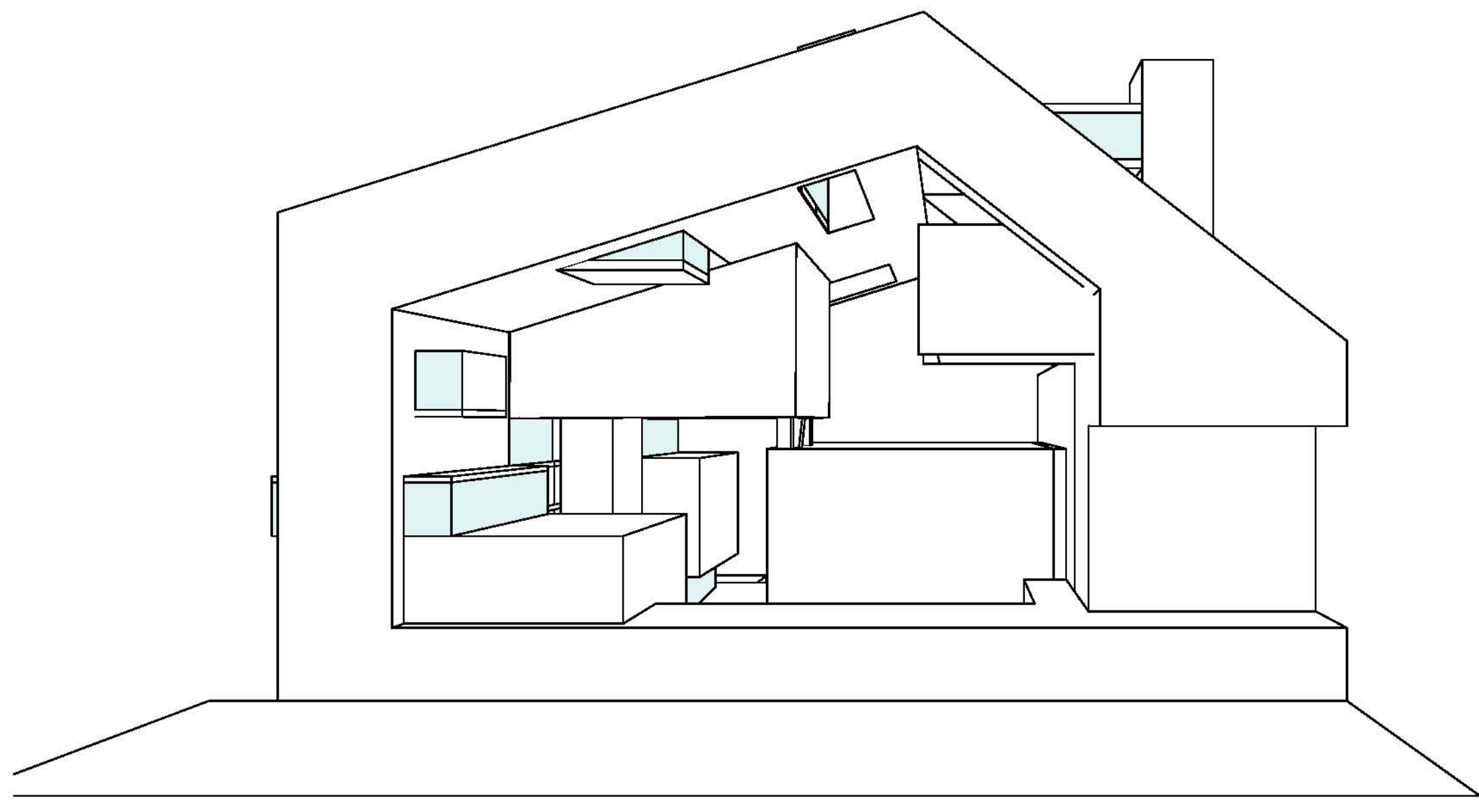
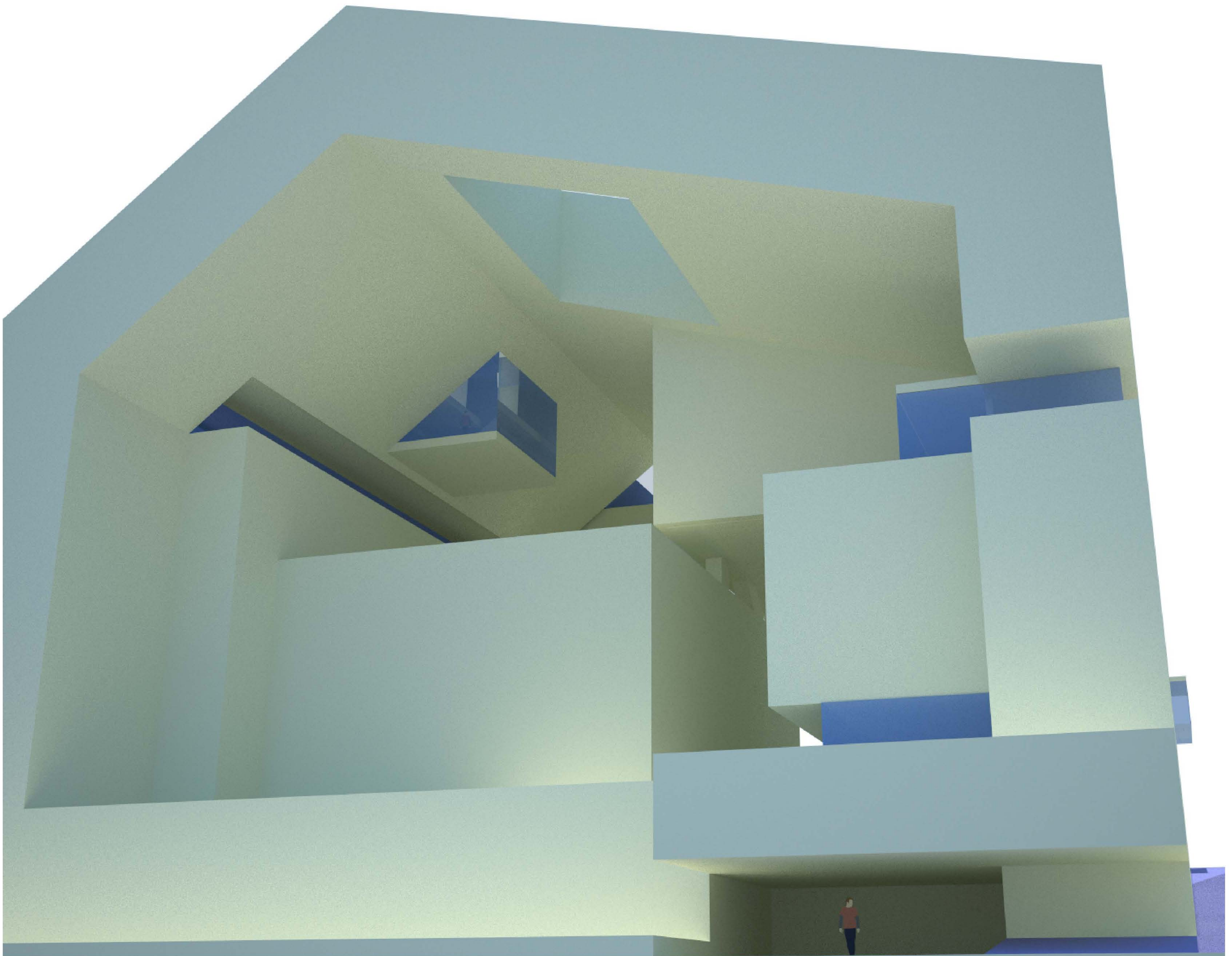


Floor Plans 1.500 scale  
Parking Level B2 (-6.50), B3 (-9.50)  
96 Parking Spaces per level

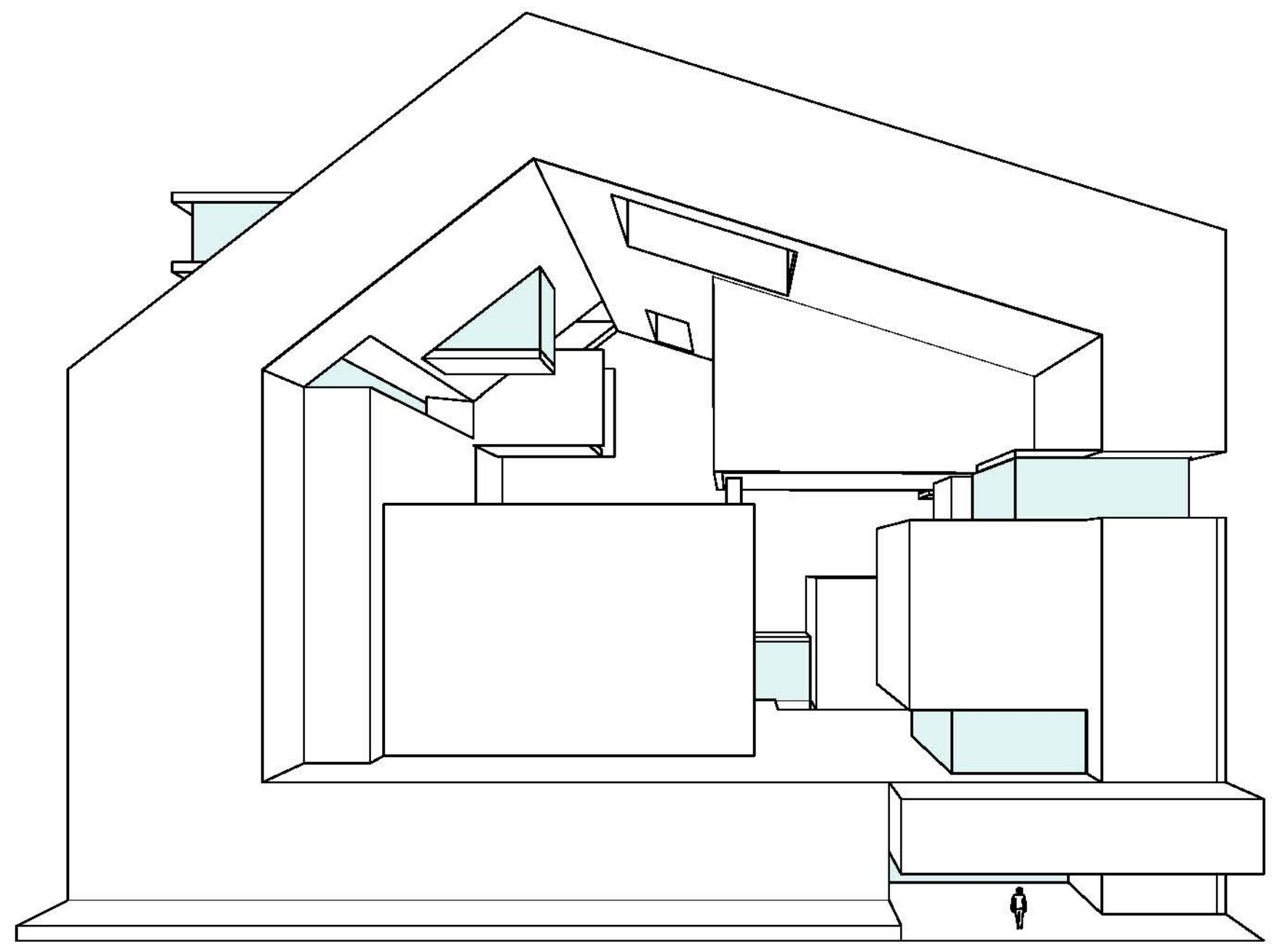


Parking Level B1 (-3.50)  
86 Parking Spaces

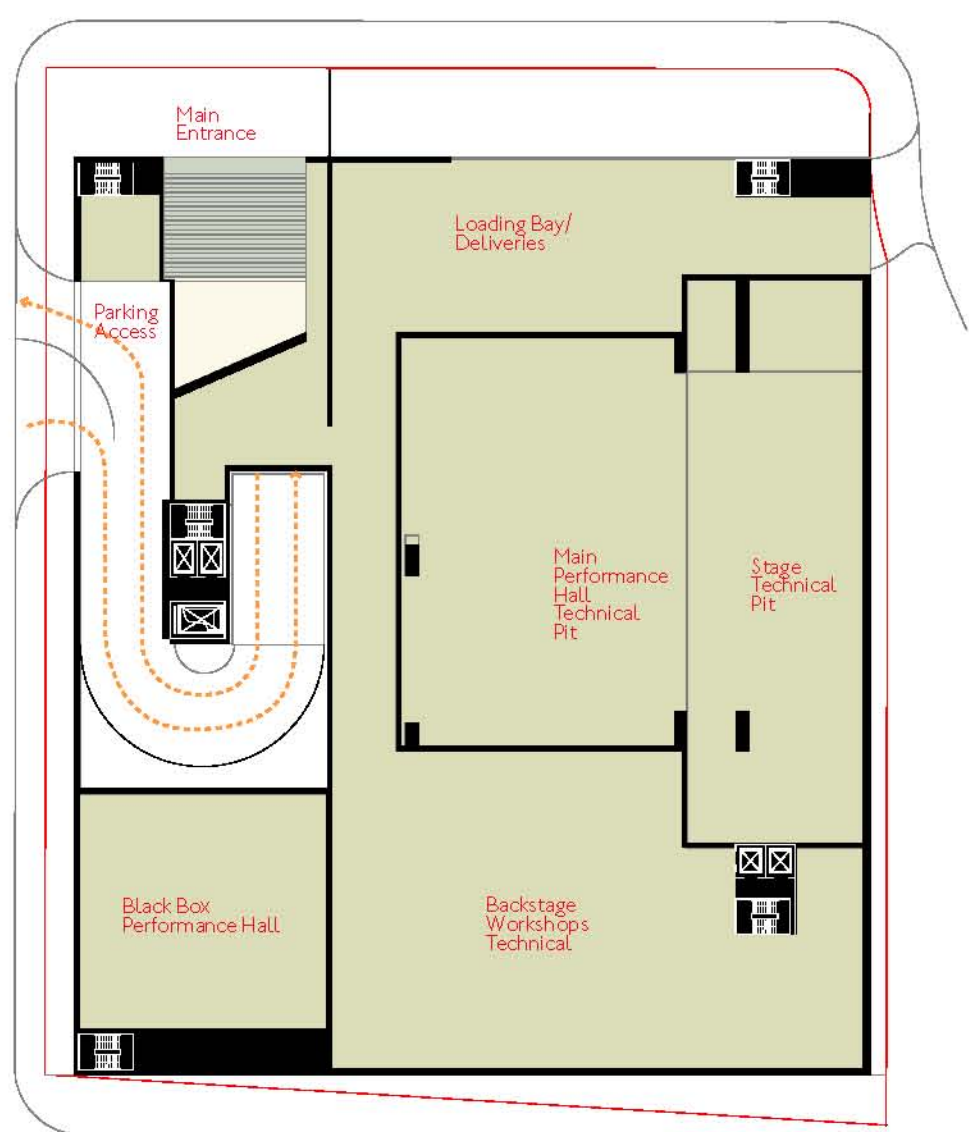




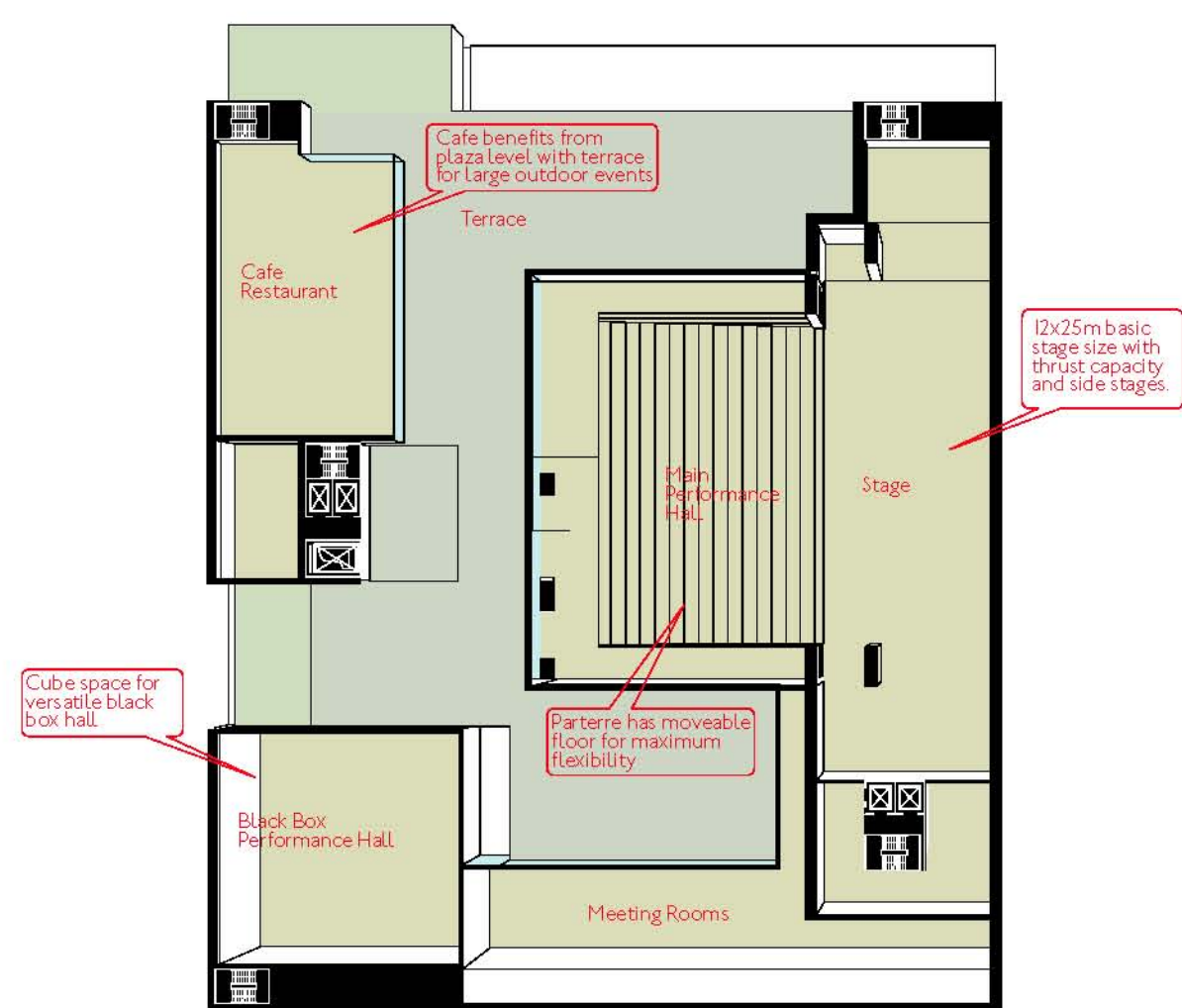
Elevation along Avenue du General Fouad Chehab scale 1:250



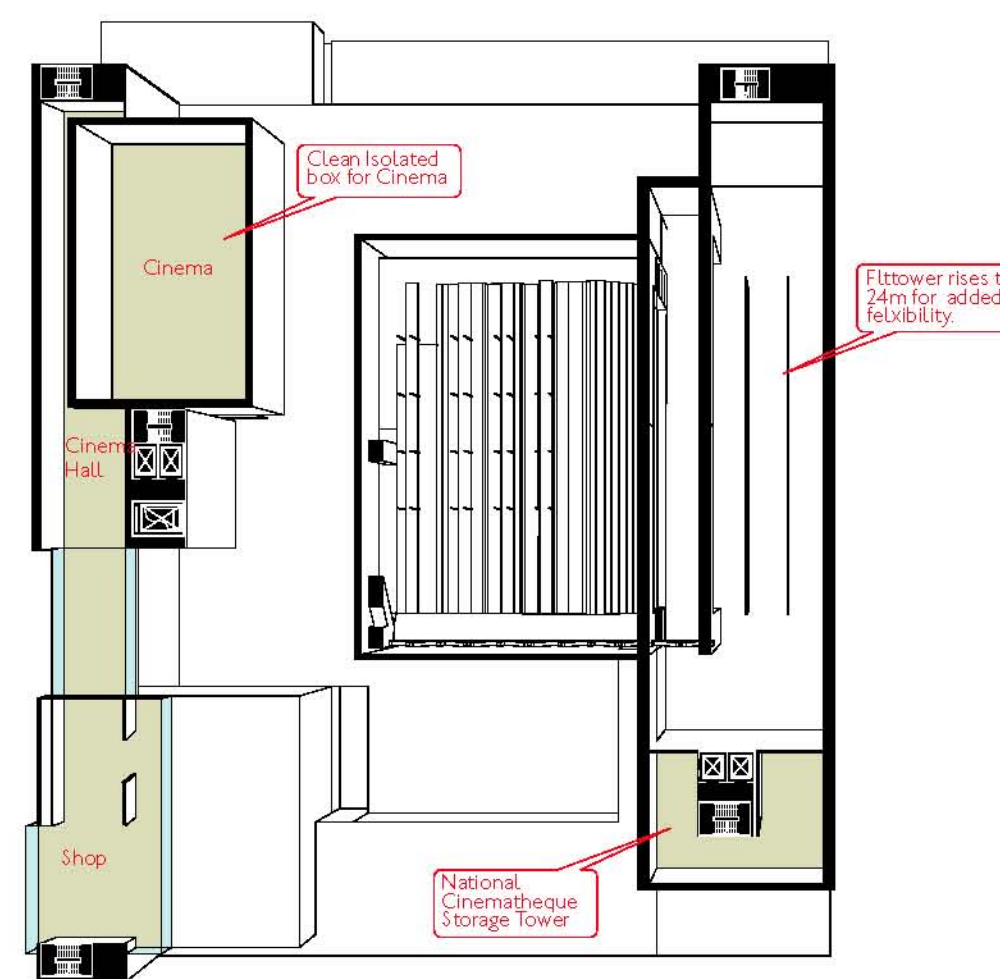
Elevation along Rue Ghalghoul scale 1:250



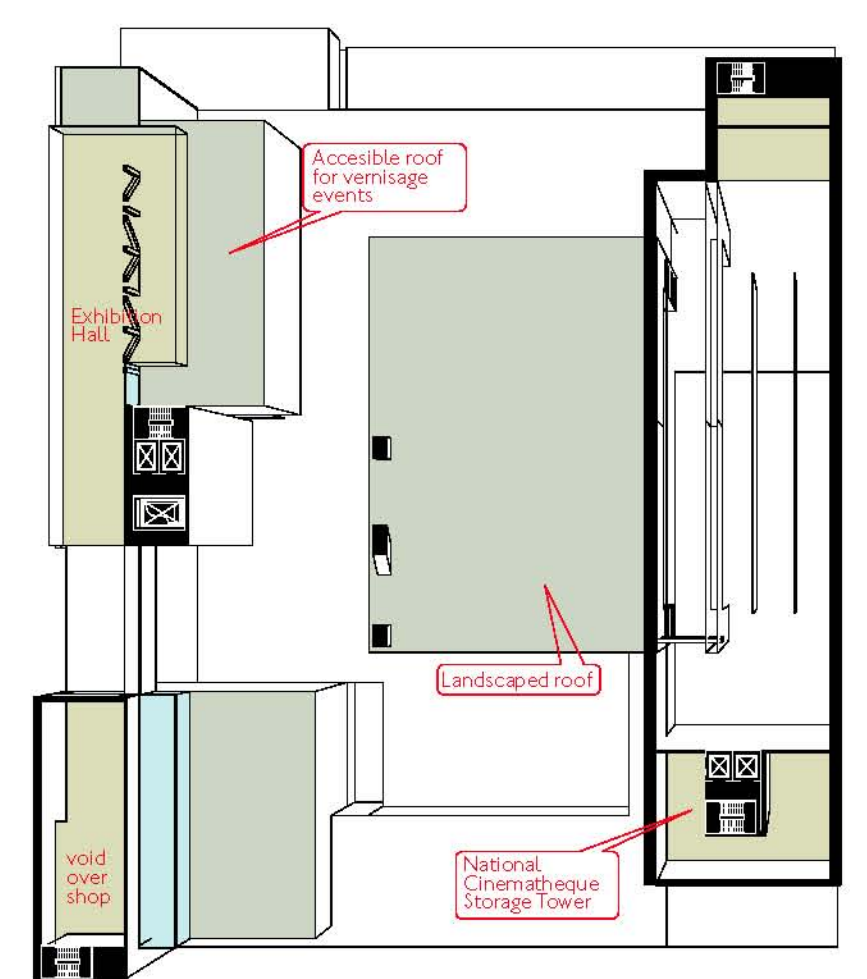
Access Level -0.50



Plaza Level +6.00



Cinema Level+9.00



Shop +15.00/ Exhibition Vestibule Level+18.00



